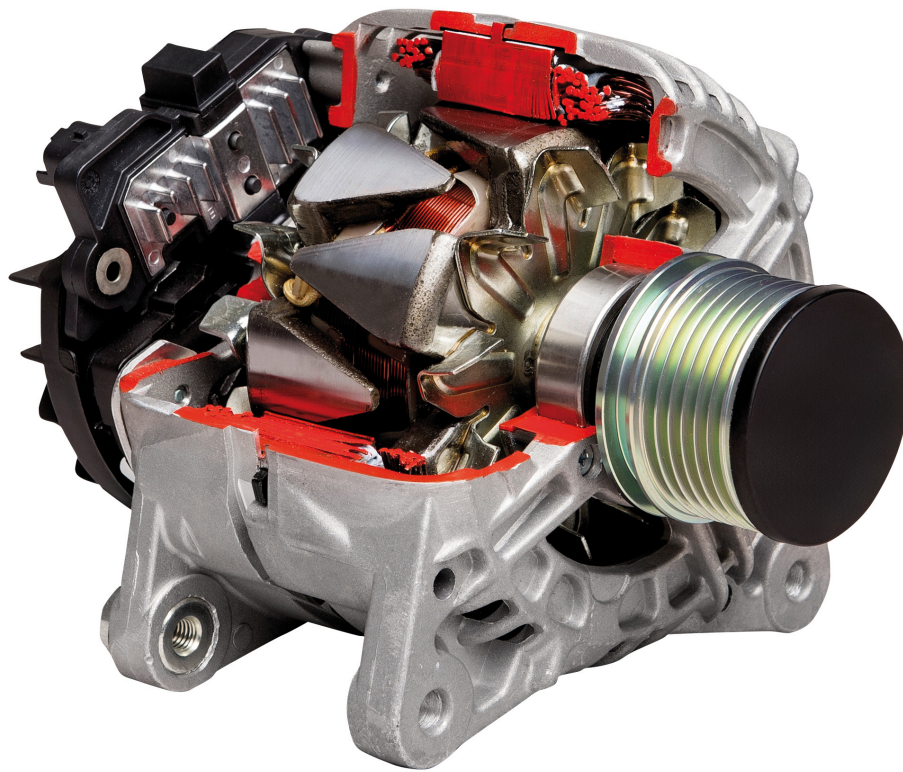


JapKo®



ALTERNATORS ALTERNATORI



www.japko.it

CATALOGUE
FOR CARS AND
COMMERCIAL VEHICLES

CATALOGO
PER AUTOMOBILI E VEICOLI
COMMERCIALI

Electrics

AL-101JM

Alternator



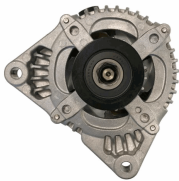
ALFA ROMEO MITO (955)
CITROEN NEMO Furgonato (AA_)
CITROEN NEMO Station wagon
FIAT 500 (312)
FIAT 500 C (312)
FIAT DOBLO (119)

OE
1204432
13117278
13117278YP
13117279
13117279YQ
13197577

Alternator Charge Current [A]: 90
Belt Pulley [mm]: 54
Clamp: M8 B+M5 D+
Number of Ribs: 6
Pulleys: with free-wheel belt pulley
Voltage [V]: 14

AL-102JM

Alternator



FORD C-MAX (DM2)
FORD FIESTA V (JH_, JD_)
FORD FIESTA Van
FORD FIESTA VI
FORD FOCUS C-MAX
FORD FOCUS II (DA_)

OE
1229258
1229259
1255711
1255712
1477737
1477738

Alternator Charge Current [A]: 150
Belt Pulley [mm]: 54
Clamp: M8 B+ [FR-SIG-A]
Number of Ribs: 6
Pulleys: with free-wheel belt pulley
Voltage [V]: 14

AL-103JM

Alternator



ALFA ROMEO 145 (930)
ALFA ROMEO 146 (930)
ALFA ROMEO 147 (937)
ALFA ROMEO 155 (167)
ALFA ROMEO 156 (932)
ALFA ROMEO 156 Sportwagon (932)

OE
0046774430
0046782218
16782213
46544329
46554408
46763533

Alternator Charge Current [A]: 100
Belt Pulley [mm]: 62
Clamp: M8 B+ M5 D+
Number of Ribs: 6
Pulleys: with multi-belt pulley
Voltage [V]: 14

AL-104JM

Alternator



ALFA ROMEO 147 (937)
ALFA ROMEO 156 (932)
ALFA ROMEO 156 Sportwagon (932)
ALFA ROMEO 166 (936)
FIAT BRAVA (182)
FIAT BRAVO I (182)

OE
46447117
46543023
46544329
46554400
46748343
46748353

Alternator Charge Current [A]: 120
Belt Pulley [mm]: 62
Clamp: M8 B+ M5 D+
Number of Ribs: 6
Pulleys: with free-wheel belt pulley
Voltage [V]: 14

AL-105JM

Alternator



ABARTH PUNTO EVO (199)
ALFA ROMEO MITO (955)
CITROEN C4 I (LC_)
FIAT 500 (312)
FIAT 500 C (312)
FIAT 500L

OE
1202290
1202445
1535437
1673521
1705484
2706074220

Alternator Charge Current [A]: 105
Belt Pulley [mm]: 54
Clamp: M8 B+, M5 D+
Number of Ribs: 5
Pulleys: with multi-belt pulley
Voltage [V]: 14

AL-106JM

Alternator



ALFA ROMEO 159 (939)
ALFA ROMEO 159 Sportwagon (939)
ALFA ROMEO BRERA
ALFA ROMEO GIULIETTA (940)
ALFA ROMEO GIULIETTA Furgonato (940_)
ALFA ROMEO MITO (955)

OE
0000051884886
0051884886
1202272
1202274
1204456
1204457

Alternator Charge Current [A]: 120
Belt Pulley [mm]: 54
Clamp: M8 B+ M5 D+
Number of Ribs: 6
Pulleys: with free-wheel belt pulley
Voltage [V]: 14

Electrics

AL-107JM

Alternator



AUDI A1 (8X1, 8XF)
AUDI A1 Sportback (8XA, 8XK)
AUDI A2 (8Z0)
AUDI A3 (8L1)
AUDI A3 (8P1)
AUDI A3 Cabriolet (8P7)

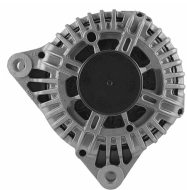
OE

006903023F
021903025K
021903025T
02607703A
028903026H
028903028E

Alternator Charge Current [A]: 140
Belt Pulley [mm]: 56
Clamp: M8 B+ [L-DFM]
Number of Ribs: 6
Pulleys: with free-wheel belt pulley
Voltage [V]: 14

AL-108JM

Alternator



CITROEN BERLINGO (B9)
CITROEN BERLINGO (MF)
CITROEN BERLINGO Furgonato (B9)
CITROEN BERLINGO Furgonato (M_)
CITROEN BERLINGO Pianale piatto/Telaio (B9)
CITROEN C-CROSSER (EP_)

OE

12317794970
1638095180
3140069K00
3140069K00000
405250752
5702

Alternator Charge Current [A]: 150
Belt Pulley [mm]: 54
Clamp: M8 B+ [L-DFM]
Number of Ribs: 6
Pulleys: with free-wheel belt pulley
Voltage [V]: 12

AL-109JM

Alternator



FORD B-MAX (JK)
FORD B-MAX Van
FORD C-MAX II
FORD C-MAX II Van
FORD ECOSPORT
FORD FIESTA VI

OE

06E903016P
1074769
1376501
1387927
1506299
1506300

Alternator Charge Current [A]: 150
Belt Pulley [mm]: 54
Clamp: M8 B+ [LIN]
Number of Ribs: 6
Pulleys: with free-wheel belt pulley
Voltage [V]: 14

AL-110JM

Alternator



CITROEN BERLINGO (B9)
CITROEN BERLINGO (MF)
CITROEN BERLINGO Furgonato (B9)
CITROEN BERLINGO Furgonato (M_)
CITROEN C-ELYSEE
CITROEN C15 (VD_-)

OE

1638094280
27060YV010
5702000000
570200000000
5702A2
5702A3

Alternator Charge Current [A]: 90
Belt Pulley [mm]: 49
Clamp: M8 B+ [L-DFM]
Number of Ribs: 6
Pulleys: with multi-belt pulley
Voltage [V]: 12

AL-111JM

Alternator



OPEL ASTRA H (L48)
OPEL ASTRA H Furgonato (L70)
OPEL ASTRA H GTC (L08)
OPEL ASTRA H Station wagon (L35)
OPEL ASTRA H Tre volumi (L69)
OPEL COMBO Cassone / Furgonato / Promiscuo

OE

1204618
1204619
1638098880
2506102
2506103
6204183

Alternator Charge Current [A]: 100
Alternator Type: incl. vacuum pump
Belt Pulley [mm]: 60
Clamp: M8 B+ [F-L]
Number of Ribs: 6
Pulleys: with free-wheel belt pulley
Voltage [V]: 14

AL-112JM

Alternator



ALFA ROMEO 159 (939)
ALFA ROMEO 159 Sportwagon (939)
ALFA ROMEO BRERA
ALFA ROMEO MITO (955)
ALFA ROMEO SPIDER (939)
CADILLAC BLS

OE

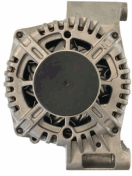
1204434
1204436
12759595
13117236
13117341
13117341AA

Alternator Charge Current [A]: 130
Belt Pulley [mm]: 62
Clamp: M8 B+ M6 DFM, M5 D+
Number of Ribs: 6
Pulleys: with free-wheel belt pulley
Voltage [V]: 14

Electrics

AL-113JM

Alternator



ALFA ROMEO MITO (955)
CITROEN NEMO Furgonato (AA_)
CITROEN NEMO Station wagon
FIAT 500 (312)
FIAT 500 C (312)
FIAT DOBLO (119)

OE
1204429
13153237
13197578
13256928
13256929
1606439580

Alternator Charge Current [A]: 120
Belt Pulley [mm]: 54
Clamp: M8 B+ M5 D+
Number of Ribs: 6
Pulleys: with free-wheel belt pulley
Voltage [V]: 14

AL-114JM

Alternator



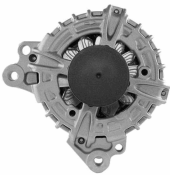
OPEL AGILA (A) (H00)
OPEL AGILA (B) (H08)
OPEL ASTRA H (L48)
OPEL ASTRA H Furgonato (L70)
OPEL ASTRA H GTC (L08)
OPEL ASTRA H Station wagon (L35)

OE
13222935
13222936
13256931
13256932
1648226980
6204258

Alternator Charge Current [A]: 120
Belt Pulley [mm]: 54
Clamp: M8 B+ [DFM-L]
Number of Ribs: 6
Pulleys: with free-wheel belt pulley
Voltage [V]: 12

AL-115JM

Alternator



AUDI A1 (8X1, 8XF)
AUDI A1 Sportback (8XA, 8XK)
AUDI A3 (8V1)
AUDI A3 Cabriolet (8V7)
AUDI A3 Limousine (8VS)
AUDI A3 Sportback (8VA)

OE
03G903016B
03G903016BX
03G903016E
03G903016EX
03G903016G
03G903016GX

Alternator Charge Current [A]: 140
Belt Pulley [mm]: 49
Clamp: M8 B+ [LIN]
Number of Ribs: 6
Pulleys: with free-wheel belt pulley
Voltage [V]: 14

AL-116JM

Alternator



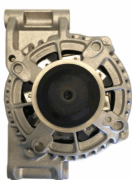
HYUNDAI H-1 / STAREX
HYUNDAI H-1 Furgonato
HYUNDAI H-1 Pianale piatto/Telaio
HYUNDAI H100 Pianale piatto/Telaio
MAZDA 323 C IV (BG)
MAZDA 323 F IV (BG)

OE
1800A005
1800A243
3730042710
A002T1199AT
A002T81499
A002T82899

Alternator Charge Current [A]: 90
Alternator Type: incl. vacuum pump
Belt Pulley [mm]: 76
Clamp: M8 [L-S]
Number of Ribs: 2
Pulleys: Without multi-belt pulley
Voltage [V]: 12

AL-117JM

Alternator



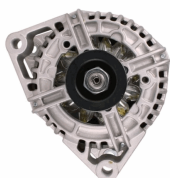
ALFA ROMEO MITO (955)
CHRYSLER YPSILON
CITROEN NEMO Furgonato (AA_)
CITROEN NEMO Station wagon
FIAT 500 (312)
FIAT 500 C (312)

OE
1608858180
1622718380
51880172
51880173
51880175
51984058

Alternator Charge Current [A]: 120
Belt Pulley [mm]: 54
Clamp: M8 B+ [LIN]
Number of Ribs: 6
Pulleys: with free-wheel belt pulley
Voltage [V]: 12

AL-118JM

Alternator



OPEL AGILA (A) (H00)
OPEL ASTRA CLASSIC (L48)
OPEL ASTRA CLASSIC Station wagon
OPEL ASTRA F (56_, 57_)
OPEL ASTRA F 2 volumi /Coda spiovente (53_,
54_, 58_, 5)

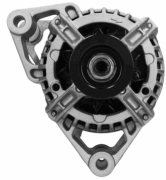
OE
09117935
10480226
1204155
13143128
13156053
1638113680

Alternator Charge Current [A]: 120
Belt Pulley [mm]: 54
Clamp: M8 B+
Number of Ribs: 5
Pulleys: with multi-belt pulley
Voltage [V]: 12

Electrics

AL-119JM

Alternator



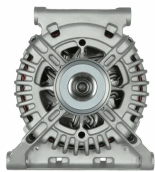
OPEL AGILA (A) (H00)
OPEL AGILA (B) (H08)
OPEL ASTRA CLASSIC (L48)
OPEL ASTRA CLASSIC Station wagon
OPEL ASTRA G 2 volumi /Coda spiovente (F48,
F08_)

OE
09117930
09117932
09133599
1204136
13156052
1638101480

Alternator Charge Current [A]: 70
Belt Pulley [mm]: 52
Clamp: M8 B+
Number of Ribs: 5
Pulleys: with multi-belt pulley
Voltage [V]: 12

AL-120JM

Alternator



MERCEDES-BENZ CLASSE A (W169)
MERCEDES-BENZ CLASSE B (W245)
MERCEDES-BENZ CLASSE C (W204)

OE
6401540102
6401540202
6401540302
6401540402
6401540502
640154050280

Alternator Charge Current [A]: 150
Belt Pulley [mm]: 50
Clamp: M8 B+ [LIN]
Number of Ribs: 5
Pulleys: with free-wheel belt pulley
Voltage [V]: 12

AL-121JM

Alternator



CITROEN BERLINGO (B9)
CITROEN BERLINGO (K9)
CITROEN BERLINGO (MF)
CITROEN BERLINGO Furgonato (B9)
CITROEN BERLINGO Furgonato (K9)
CITROEN BERLINGO Pianale piatto/Telaio (B9)

OE
1606859180
1609957280
1611285580
1612458880
1623862880
1638094380

Alternator Charge Current [A]: 150
Belt Pulley [mm]: 54
Clamp: M8 B+ [LIN]
Number of Ribs: 6
Pulleys: with free-wheel belt pulley
Voltage [V]: 14

AL-122JM

Alternator



AUDI A1 (8X1, 8XF)
AUDI A1 Sportback (8XA, 8XK)
AUDI A2 (8Z0)
AUDI A3 (8L1)
AUDI A3 (8P1)
AUDI A3 Cabriolet (8P7)

OE
021903025H
021903025J
028903028C
028903028CX
028903028D
028903028DX

Alternator Charge Current [A]: 110
Belt Pulley [mm]: 56
Clamp: M8 B+ [L-DFM]
Number of Ribs: 6
Pulleys: with multi-belt pulley
Voltage [V]: 14

AL-123JM

Alternator



AUDI A2 (8Z0)
AUDI A3 (8L1)
AUDI A3 (8P1)
AUDI A3 Cabriolet (8P7)
AUDI A3 Sportback (8PA)
AUDI A4 (8D2, B5)

OE
023903028D
028903018P
038903018L
038903018LX
038903018P
038903018PX

Alternator Charge Current [A]: 90
Belt Pulley [mm]: 56
Clamp: M8 B+ [L-DFM]
Number of Ribs: 6
Pulleys: with free-wheel belt pulley
Voltage [V]: 12

AL-124JM

Alternator



ALFA ROMEO 33 (905)
ALFA ROMEO 33 Sportwagon (905A)
ALFA ROMEO 6 (119)
ALFA ROMEO 75 (162B)
ALFA ROMEO 90 (162)
ALFA ROMEO ALFETTA (116)

OE
116760506000
116760506100
1516538R
1516607R
2022607
2995030

Alternator Charge Current [A]: 55
Belt Pulley [mm]: 86
Clamp: M6,D+
Number of Ribs: 1
Pulleys: Without multi-belt pulley
Voltage [V]: 12

Electrics

AL-125JM

Alternator



AUTOBIANCHI Y10
FIAT CINQUECENTO (170)
FIAT CINQUECENTO VAN (170)
FIAT PANDA (141A_)
FIAT PANDA Van (141_)
FIAT SEICENTO (187)

OE

0000007565832
0000046231660
11572630
11572690
11572700
20222615

Alternator Charge Current [A]: 55
Belt Pulley [mm]: 65
Clamp: M6,D+
Number of Ribs: 1
Pulleys: Without multi-belt pulley
Voltage [V]: 12

AL-126JM

Alternator



AUTOBIANCHI A 112
AUTOBIANCHI Y10
FIAT 126
FIAT 127
FIAT 131
FIAT 131 Familiare/Panorama

OE

0003934961
2702061013
2702061100
2702061130
4242498
4274759

Alternator Charge Current [A]: 55
Belt Pulley [mm]: 66
Clamp: M6,D+
Number of Ribs: 1
Pulleys: Without multi-belt pulley
Voltage [V]: 12

AL-127JM

Alternator



ALFA ROMEO 33 (907A)
ALFA ROMEO 6 (119)
ALFA ROMEO 75 (162B)
ALFA ROMEO 90 (162)
ALFA ROMEO ALFETTA (116)
ALFA ROMEO AR 6 Furgonato (280)

OE

038522068A
1204072
1204344
2943925
294394800
38522068A

Alternator Charge Current [A]: 65
Belt Pulley [mm]: 93
Clamp: M6,D+
Number of Ribs: 2
Pulleys: Without multi-belt pulley
Voltage [V]: 12

AL-128JM

Alternator



RENAULT CLIO Grandtour (KR0/1_)
RENAULT CLIO Grandtour IV
RENAULT CLIO I (B/C57_, 5/357_)
RENAULT CLIO II (BB0/1/2_, CB0/1/2_)
RENAULT CLIO II Furgonato (SB0/1/2_)
RENAULT CLIO III (BR0/1, CR0/1)

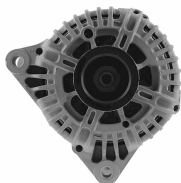
OE

231000646
231000646R
7711368178
7711368602
7711368683
7711497015

Alternator Charge Current [A]: 120
Belt Pulley [mm]: 55
Clamp: M8 B+ [BSS]
Number of Ribs: 7
Pulleys: with multi-belt pulley
Voltage [V]: 14

AL-129JM

Alternator



CITROEN BERLINGO (B9)
CITROEN BERLINGO (MF)
CITROEN BERLINGO Furgonato (B9)
CITROEN BERLINGO Furgonato (M_)
CITROEN C1 (PM_, PN_)
CITROEN C2 (JM_)

OE

27060YU020
27060YV020
3140073J00
3140073J00000
5702A6
5702A7

Alternator Charge Current [A]: 150
Belt Pulley [mm]: 54
Clamp: M8 B+ [L-DFM]
Number of Ribs: 6
Pulleys: with multi-belt pulley
Voltage [V]: 14

AL-130JM

Alternator



ABARTH PUNTO EVO (199)
ABARTH PUNTO EVO (199_)
ALFA ROMEO GIULIETTA (940)
ALFA ROMEO GIULIETTA Furgonato (940_)
ALFA ROMEO MITO (955)
CHRYSLER DELTA

OE

51788658
51837747
51854903
51927506
52003527
52003621

Alternator Charge Current [A]: 120
Belt Pulley [mm]: 54
Clamp: M8 B+ M5 D+
Number of Ribs: 5
Pulleys: with free-wheel belt pulley
Voltage [V]: 14

Electrics

AL-131JM

Alternator



DACIA DOKKER
DACIA DOKKER Express
DACIA DUSTER
DACIA DUSTER Furgonato
DACIA LODGY
DACIA LOGAN (LS_)

OE

231000026
231000026R
231005018R
4159064900
7711368381
7711497409

Alternator Charge Current [A]: 160
Belt Pulley [mm]: 55
Clamp: M8 B+ [BSS]
Number of Ribs: 6
Pulleys: with free-wheel belt pulley
Voltage [V]: 14

AL-132JM

Alternator



CHRYSLER DELTA
DODGE JOURNEY
FIAT FREEMONT (JF_)

OE

56029574AA
K56029574AA
K56029574AB
P56029574AA
TT13138

Alternator Charge Current [A]: 130
Belt Pulley [mm]: 54
Clamp: M8 B+ [LIN]
Number of Ribs: 6
Pulleys: with free-wheel belt pulley
Voltage [V]: 14

AL-133JM

Alternator



TOYOTA AURIS (NRE15_, ZZE15_, ADE15_, ZRE15_, NDE15_)
TOYOTA AVENSIS
TOYOTA AVENSIS (T25_)
TOYOTA AVENSIS Station wagon (T25)
TOYOTA AVENSIS Station wagon (ZRT27,

OE

270600G010
270600G011
270600G01184
270600R060
270600R070
270600R071

Alternator Charge Current [A]: 100
Belt Pulley [mm]: 58
Clamp: [RLO-DFM-IG-L]
Number of Ribs: 7
Pulleys: with free-wheel belt pulley
Voltage [V]: 14

AL-134JM

Alternator



LEXUS IS II (GSE2_, ALE2_, USE2_)
TOYOTA AURIS (NRE15_, ZZE15_, ADE15_, ZRE15_, NDE15_)
TOYOTA AVENSIS
TOYOTA AVENSIS Station wagon (ZRT27, ADT27)

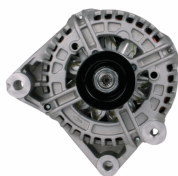
OE

0210802470
2706006081
270600G021
270600R080
2706026030
270602603084

Alternator Charge Current [A]: 150
Belt Pulley [mm]: 58
Clamp: M6 B+ [RLO-DFM-IG-L]
Number of Ribs: 7
Pulleys: with free-wheel belt pulley
Voltage [V]: 14

AL-135JM

Alternator



BMW 3 (E46)
BMW 3 Cabriolet (E46)
BMW 3 Compact (E46)
BMW 3 Coupe (E46)
BMW 3 Touring (E46)
BMW X3 (E83)

OE

12317789980
12317789983
12317797660
12317797661
7789980
7789980A101

Alternator Charge Current [A]: 150
Belt Pulley [mm]: 54
Clamp: M8 B+ [L-DFM]
Number of Ribs: 6
Pulleys: with multi-belt pulley
Voltage [V]: 12

AL-136JM

Alternator



FORD FIESTA V (JH_, JD_)
FORD FIESTA Van
FORD FUSION (JU_)
MAZDA 2 (DY)

OE

1140135
1464756
1464788
1477856
1545138
1763590

Alternator Charge Current [A]: 80
Belt Pulley [mm]: 54
Clamp: M8 B+ [FR-SIG-A]
Number of Ribs: 6
Pulleys: with free-wheel belt pulley
Voltage [V]: 14

Electrics

AL-137JM

Alternator



ALPINA D3 (E90)
ALPINA D3 Coupé (E92)
ALPINA D3 Station wagon (E91)
BMW 1 (E81)
BMW 1 (E87)
BMW 3 (E90)

OE

12317790548
12317795620
12317797519
12317797520
12317799180
12317799181

Alternator Charge Current [A]: 150
Belt Pulley [mm]: 54
Clamp: M8 B+ [COM]
Number of Ribs: 6
Pulleys: with multi-belt pulley
Voltage [V]: 14

AL-138JM

Alternator



FIAT DUCATO Autobus (244, Z_)
FIAT DUCATO Autobus (250)
FIAT DUCATO Furgonato (244)
FIAT DUCATO Furgonato (250)
FIAT DUCATO Pianale piatto/Telaio (244)
FIAT DUCATO Pianale piatto/Telaio (250)

OE

0000504009977
1506770R
2995390
500059504
504009977
504009977

Alternator Charge Current [A]: 140
Belt Pulley [mm]: 55
Clamp: M8 B+ [L-DFM]
Number of Ribs: 7
Pulleys: with multi-belt pulley
Voltage [V]: 14

AL-139JM

Alternator



DACIA DOKKER
DACIA DUSTER
DACIA DUSTER Furgonato
DACIA LODGY
DACIA LOGAN (LS_)
DACIA LOGAN II

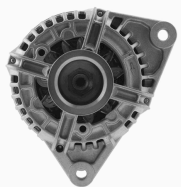
OE

1121540202
1121542002
2310000Q0M
2310000Q2J
2310000Q2JEX
2310000QBH

Alternator Charge Current [A]: 150
Belt Pulley [mm]: 55
Clamp: M8 B+ [L-DFM]
Number of Ribs: 6
Pulleys: with free-wheel belt pulley
Voltage [V]: 14

AL-140JM

Alternator



IVECO DAILY III Autobus
IVECO DAILY III Cassone / Furgonato /
Promiscuo
IVECO DAILY III Pianale piatto/Telaio
RENAULT MASCOTT Furgonato (FH_)
RENAULT MASCOTT Pianale piatto/Telaio (UH_)

OE

1516489
1516489R
1524013R
2995544
2995548
2995982

Alternator Charge Current [A]: 120
Belt Pulley [mm]: 68
Clamp: M8 B+ [L-DFM]
Number of Ribs: 6
Pulleys: with multi-belt pulley
Voltage [V]: 14

AL-141JM

Alternator



FORD FIESTA V (JH_, JD_)
FORD FIESTA Van
FORD FIESTA VI
FORD FIESTA VI Van
FORD FUSION (JU_)
MAZDA 2 (DY)

OE

1140135
1303447
1464756
1464788
1477856
1477859

Alternator Charge Current [A]: 80
Belt Pulley [mm]: 54
Clamp: M8 B+ [FR-SIG-A]
Number of Ribs: 6
Pulleys: with multi-belt pulley
Voltage [V]: 14

AL-142JM

Alternator



FORD FOCUS (DAW, DBW)
FORD FOCUS Cassone / Furgonato / Promiscuo
(DNW)
FORD FOCUS Station wagon (DNW)
FORD FOCUS Tre volumi (DFW)

OE

1079312
1097306
1126051
1138231
1144182
1144183

Alternator Charge Current [A]: 90
Belt Pulley [mm]: 78
Clamp: M8 B+ [FR-SIG-A]
Pulleys: Without multi-belt pulley
Voltage [V]: 14

Electrics

AL-143JM

Alternator



BMW 1 (E81)
BMW 1 (E87)
BMW 1 Cabriolet (E88)
BMW 1 Coupé (E82)
BMW 3 (E90)
BMW 3 Cabriolet (E93)

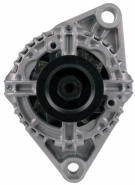
OE

12317802261
12317802619
7802261
7802619

Alternator Charge Current [A]: 180
Belt Pulley [mm]: 53
Clamp: M6 B+ [COM-BSS]
Number of Ribs: 6
Pulleys: with multi-belt pulley
Voltage [V]: 14

AL-144JM

Alternator



ALFA ROMEO 147 (937)
FIAT BRAVA (182)
FIAT BRAVO I (182)
FIAT DOBLO (119)
FIAT DOBLO Cargo (223)
FIAT MAREA (185)

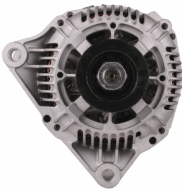
OE

46420963
46432413
46532667
46532668
46532669
468130061

Alternator Charge Current [A]: 105
Belt Pulley [mm]: 60
Clamp: M8
Number of Ribs: 5
Pulleys: with multi-belt pulley
Voltage [V]: 12

AL-145JM

Alternator



CITROEN BERLINGO (MF)
CITROEN BERLINGO Furgonato (M_)
CITROEN C15 (VD_-)
CITROEN C15 Pick-up (VDPD)
CITROEN C5 Cassone / Furgonato / Promiscuo (DE_, RE_)

OE

1516470R
1516478R
1516492R
57052A
57052B
57052C

Alternator Charge Current [A]: 90
Belt Pulley [mm]: 55
Clamp: M8 B+,M5 D+ W
Number of Ribs: 6
Pulleys: with multi-belt pulley
Voltage [V]: 14

AL-146JM

Alternator



AUTOBIANCHI Y10
FIAT 126
FIAT 127
FIAT 127 Panorama
FIAT 128
FIAT 128 Coupe

OE

076903023G
3430200
43231721
4395131
4419109
4434084

Alternator Charge Current [A]: 65
Belt Pulley [mm]: 58
Clamp: M6
Number of Ribs: 5
Pulleys: with multi-belt pulley
Voltage [V]: 12

AL-147JM

Alternator



TOYOTA YARIS (SCP9_, NSP9_, KSP9_, NCP9_, ZSP9_)

OE

270600Q060
2706040040
2706040041

Alternator Charge Current [A]: 80
Belt Pulley [mm]: 80
Clamp: M6 B+ [RLO-DFM-IG-L]
Number of Ribs: 6
Pulleys: with multi-belt pulley
Voltage [V]: 14

AL-148JM

Alternator



JEEP GRAND CHEROKEE II (WJ, WG)
MERCEDES-BENZ CLASSE C (W202)
MERCEDES-BENZ CLASSE C (W203)
MERCEDES-BENZ CLASSE C Coupe (CL203)
MERCEDES-BENZ CLASSE C Station wagon (S202)

OE

004717V005
0101545902
010154590280
0101546302
0101549502
010154950280

Alternator Charge Current [A]: 120
Belt Pulley [mm]: 50
Clamp: M8 B+ M5 D+
Number of Ribs: 6
Pulleys: with free-wheel belt pulley
Voltage [V]: 14

Electrics

AL-149JM

Alternator



CITROEN JUMPER Autobus (230P)
 CITROEN JUMPER Autobus (244, Z_)
 CITROEN JUMPER Furgonato (230L)
 CITROEN JUMPER Furgonato (244)
 CITROEN JUMPER Pianale piatto/Telaio (230)
 CITROEN JUMPER Pianale piatto/Telaio (244)

OE

12090113
 500345767
 500371244
 504033459
 5702A8
 5702A9

Alternator Charge Current [A]: 150
 Belt Pulley [mm]: 60
 Clamp: M5 D+
 Number of Ribs: 6
 Pulleys: with multi-belt pulley
 Voltage [V]: 12

AL-150JM

Alternator



AUDI 80 Avant (8C, B4)
 AUDI 90 (89, 89Q, 8A, B3)
 BAOLONG LINGHUI
 BAOLONG LINGJUN
 BAOLONG LINGQI
 CHEVROLET CLASSIC

OE

0000098417133
 0000098417134
 038520135A
 1516473R
 1516529R
 2997074

Alternator Charge Current [A]: 35
 Belt Pulley [mm]: 95
 Clamp: M6
 Number of Ribs: 1
 Pulleys: Without multi-belt pulley
 Voltage [V]: 24

AL-151JM

Alternator



CITROEN JUMPER Autobus
 CITROEN JUMPER Furgonato
 CITROEN JUMPER Pianale piatto/Telaio
 FIAT DUCATO Autobus (250)
 FIAT DUCATO Furgonato (250)
 FIAT DUCATO Pianale piatto/Telaio (250)

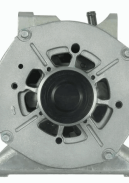
OE

1372736
 1374171
 1404791
 1474021
 1572736
 1581842

Alternator Charge Current [A]: 150
 Belt Pulley [mm]: 59
 Clamp: M8 B+ [L-DFM]
 Number of Ribs: 6
 Pulleys: with free-wheel belt pulley
 Voltage [V]: 14

AL-152JM

Alternator



MERCEDES-BENZ CLASSE A (W168)
 MERCEDES-BENZ CLASSE A (W169)
 MERCEDES-BENZ Vaneo (414)

OE

000150065080
 6681540102
 668154010280
 6681540202
 668154020280
 6681540302

Alternator Charge Current [A]: 150
 Belt Pulley [mm]: 50
 Clamp: M8 B+ [L-DFM]
 Number of Ribs: 5
 Pulleys: with multi-belt pulley
 Voltage [V]: 12

AL-153JM

Alternator



ABARTH PUNTO EVO (199)
 ALFA ROMEO MITO (955)
 FIAT 500 (312)
 FIAT 500 C (312)
 FIAT 500L
 FIAT BRAVO II (198)

OE

1202288
 1202463
 1535436
 1673520
 1705483
 1719535

Alternator Charge Current [A]: 105
 Belt Pulley [mm]: 54
 Clamp: M8 B+, M5 D+
 Number of Ribs: 4
 Pulleys: with multi-belt pulley
 Voltage [V]: 14

AL-154JM

Alternator



NISSAN INTERSTAR Autobus (X70)
 NISSAN INTERSTAR Furgonato (X70)
 NISSAN INTERSTAR Pianale piatto/Telaio
 NISSAN PATHFINDER
 NISSAN PRIMASTAR Autobus (X83)
 NISSAN PRIMASTAR Furgonato (X83)

OE

2303011252
 2310000Q0F
 2310000Q0L
 2310000Q2F
 2310000QAN
 23100AW300

Alternator Charge Current [A]: 150
 Belt Pulley [mm]: 49
 Clamp: M8 B+ [L-DFM]
 Number of Ribs: 7
 Pulleys: with multi-belt pulley
 Voltage [V]: 14

Electrics

AL-155JM

Alternator



HYUNDAI GRANDEUR (TG)
NISSAN PRIMASTAR Autobus (X83)
NISSAN PRIMASTAR Furgonato (X83)
NISSAN TERRANO
OPEL MOVANO B Autobus
OPEL MOVANO B Furgonato

OE

1204193
2310000Q0J
231001202R
231009513R
4431340
7711368437

Alternator Charge Current [A]: 150
Belt Pulley [mm]: 49
Clamp: M8 B+ [L-DFM]
Number of Ribs: 7
Pulleys: with free-wheel belt pulley
Voltage [V]: 14

AL-156JM

Alternator



CITROEN JUMPER Autobus (230P)
CITROEN JUMPER Furgonato (230L)
CITROEN JUMPER Pianale piatto/Telaio (230)
FIAT BRAVA (182)
FIAT CROMA (154)
FIAT DUCATO Autobus (230)

OE

12317519621
12317519622
1516403R
4403214
4403215
4500044

Alternator Charge Current [A]: 110
Belt Pulley [mm]: 55
Clamp: M8 D+ W
Number of Ribs: 6
Pulleys: with multi-belt pulley
Voltage [V]: 12

AL-157JM

Alternator



SMART CABRIO (450)
SMART CITY-COUPE (450)
SMART CROSSBLADE (450)
SMART FORTWO Cabrio (450)
SMART FORTWO Coupé (450)
SMART ROADSTER (452)

OE

0002801V002
0002801V003
0002801V004
0002801V005
0002801V006
0002801V007

Alternator Charge Current [A]: 75
Belt Pulley [mm]: 58
Clamp: M6 B+ M5 D+ M5 ,PHIN
Number of Ribs: 4
Pulleys: with multi-belt pulley
Voltage [V]: 14

AL-158JM

Alternator



ALFA ROMEO GIULIETTA (940)
ALFA ROMEO GIULIETTA Furgonato (940_)
FIAT 500L
FIAT 500X
FIAT DOBLO Cassone / Furgonato / Promiscuo (263)

OE

17197917
51884351
51944891
71796428

Alternator Charge Current [A]: 120
Belt Pulley [mm]: 54
Clamp: M8 B+ [LIN]
Number of Ribs: 6
Pulleys: with free-wheel belt pulley
Voltage [V]: 14

AL-159JM

Alternator



FIAT SEDICI
OPEL AGILA (B) (H08)
SUZUKI ALTO (HA24)
SUZUKI BALENO (EG)
SUZUKI BALENO 2 volumi /Coda spiovente (EG)
SUZUKI BALENO Station wagon (EG)

OE

245111602
30020754
30026055
3140036D20
3140055L00
3140055L01

Alternator Charge Current [A]: 70
Belt Pulley [mm]: 55
Clamp: M6 B+ [IG-L]
Number of Ribs: 4
Pulleys: with multi-belt pulley
Voltage [V]: 12

AL-160JM

Alternator



CITROEN JUMPY (U6U)
FIAT DOBLO (119)
FIAT DOBLO Cargo (223)
FIAT MULTIPLA (186)
FIAT PALIO (178BX)
FIAT PALIO Weekend (178DX)

OE

43420960
46231693
46407644
46407647
46419297
46420960

Alternator Charge Current [A]: 75
Belt Pulley [mm]: 60
Clamp: M8
Number of Ribs: 4
Pulleys: with multi-belt pulley
Voltage [V]: 12

Electrics

AL-161JM

Alternator



CHEVROLET CRUZE (J300)
 CHEVROLET CRUZE 2 volumi /Coda spiovente (J305)
 CHEVROLET CRUZE Station Wagon (J308)
 CHEVROLET TRAX
 OPEL ASTRA GTC J

OE
 1202117
 1202118
 1202261
 1202264
 1202328
 1202338

Alternator Charge Current [A]: 140
 Belt Pulley [mm]: 60
 Clamp: M8 B+ [DFM-RVC]
 Number of Ribs: 6
 Pulleys: with free-wheel belt pulley
 Voltage [V]: 14

AL-162JM

Alternator



TOYOTA DYNA Pianale piatto/Telaio (KD_, LY_, TRY2_, KDY2_)
 TOYOTA FORTUNER Fuoristrada chiuso (TGN6_, KUN6_, GGN6_)
 TOYOTA HIACE / COMMUTER IV (TRH2_, KDH2_)
 TOYOTA HIACE IV Autobus (LH1_)

OE
 270600L010
 270600L020
 270600L021
 270600L022
 270600L02284
 270600L030

Alternator Charge Current [A]: 100
 Belt Pulley [mm]: 58
 Clamp: M6 B+ [S-DFM-IG-L]
 Number of Ribs: 7
 Pulleys: with free-wheel belt pulley
 Voltage [V]: 14

AL-163JM

Alternator



ALFA ROMEO 145 (930)
 ALFA ROMEO 146 (930)
 ALFA ROMEO 155 (167)
 ALFA ROMEO 33 (905)
 ALFA ROMEO 33 (907A)
 ALFA ROMEO 33 Sportwagon (905A)

OE
 0005927867
 110073
 4379899
 4379901
 4382200
 4423623

Alternator Charge Current [A]: 65
 Belt Pulley [mm]: 62
 Clamp: M6,D+
 Number of Ribs: 5
 Pulleys: with multi-belt pulley
 Voltage [V]: 14

AL-164JM

Alternator



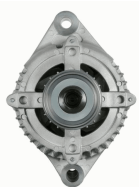
CHEVROLET CORSA Pick-up
 CHEVROLET CORSA Station wagon
 CHEVROLET CORSA Tre volumi
 HONDA CIVIC VII Hatchback (EU, EP, EV)
 OPEL ASTRA G 2 volumi /Coda spiovente (F48_, F08_)

OE
 11209424
 1204157
 1204158
 136101
 1638101680
 2506101

Alternator Charge Current [A]: 100
 Alternator Type: incl. vacuum pump
 Belt Pulley [mm]: 60
 Clamp: M8 B+ [L-W]
 Number of Ribs: 6
 Pulleys: with multi-belt pulley
 Voltage [V]: 14

AL-165JM

Alternator



ALFA ROMEO GIULIA (952_)
 ALFA ROMEO GIULIETTA (940)
 ALFA ROMEO GIULIETTA Furgonato (940_)
 FIAT 500L
 FIAT 500X
 FIAT DOBLO Cassone / Furgonato / Promiscuo

OE
 51907673
 51929089
 71796431
 71796434

Alternator Charge Current [A]: 150
 Belt Pulley [mm]: 54
 Clamp: M8 B+ [LIN]
 Number of Ribs: 6
 Pulleys: with free-wheel belt pulley
 Voltage [V]: 14

AL-166JM

Alternator



DACIA LOGAN (LS_)
 DACIA LOGAN EXPRESS (FS_)
 DACIA LOGAN Pick-up (US_)
 DACIA SANDERO
 MITSUBISHI CARISMA (DA_)
 MITSUBISHI CARISMA Tre volumi (DA_)

OE
 1800A043
 2310000Q0A
 2310000Q0D
 2310000Q0E
 2310000Q0K
 2310000Q1F

Alternator Charge Current [A]: 120
 Belt Pulley [mm]: 49
 Clamp: M8 B+ [L-DFM]
 Number of Ribs: 6
 Pulleys: with free-wheel belt pulley
 Voltage [V]: 14

Electrics

AL-167JM

Alternator



CHRYSLER 300 C (LX)
CHRYSLER 300 C Touring (LX)
JEEP COMMANDER (XK)
JEEP COMMANDER VAN (XH)
JEEP GRAND CHEROKEE III (WH, WK)
MERCEDES-BENZ CLASSE A (W169)

OE
0009062700
00090627000087
000906270080
000906270087
04801250AA
04801250AB

Alternator Charge Current [A]: 180
Belt Pulley [mm]: 50
Clamp: M8 B+ [LIN]
Number of Ribs: 7
Pulleys: with free-wheel belt pulley
Voltage [V]: 12

AL-168JM

Alternator



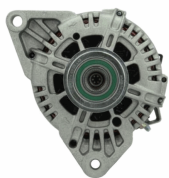
ALFA ROMEO 145 (930)
ALFA ROMEO 146 (930)
ALFA ROMEO 147 (937)
ALFA ROMEO 155 (167)
ALFA ROMEO 156 (932)
ALFA ROMEO 156 Sportwagon (932)

OE
0046430531
1516426R
46231670
46231671
46231722
46231724

Alternator Charge Current [A]: 100
Belt Pulley [mm]: 62
Clamp: M8
Number of Ribs: 6
Pulleys: with multi-belt pulley
Voltage [V]: 12

AL-169JM

Alternator



HYUNDAI ELANTRA Tre volumi (HD)
HYUNDAI ELANTRA Tre volumi (MD, UD)
HYUNDAI i20
HYUNDAI i20 (PB, PBT)
HYUNDAI i30 (FD)
HYUNDAI i30 (GD)

OE
3730002A651
373002A400
373002A401
373002A450
373002A460
373002A600

Alternator Charge Current [A]: 130
Belt Pulley [mm]: 57
Clamp: M8 B+ [C-L-FR]
Number of Ribs: 5
Pulleys: with free-wheel belt pulley
Voltage [V]: 14

AL-170JM

Alternator



AUDI A2 (8Z0)
AUDI A3 (8L1)
AUDI A3 (8P1)
AUDI A3 Cabriolet (8P7)
AUDI A4 (8D2, B5)
AUDI A4 Avant (8D5, B5)

OE
02690301539
02690301541
028903018RX
0289030252
028903026M
028903026P

Alternator Charge Current [A]: 110
Belt Pulley [mm]: 50
Clamp: M8 B+ [L-DFM]
Number of Ribs: 6
Pulleys: with multi-belt pulley
Voltage [V]: 12

AL-171JM

Alternator



HYUNDAI ELANTRA (XD)
HYUNDAI ELANTRA Tre volumi (XD)
HYUNDAI GRANDEUR (TG)
HYUNDAI HIGHWAY VAN
HYUNDAI i30 (FD)
HYUNDAI i30 CW (FD)

OE
2730027012
3730027000
3730027010
3730027011
3730027012
3730027012AT

Alternator Charge Current [A]: 120
Alternator Type: incl. vacuum pump
Belt Pulley [mm]: 60
Clamp: M8 B+ [L-S]
Number of Ribs: 6
Pulleys: with free-wheel belt pulley
Voltage [V]: 14

AL-172JM

Alternator



ALFA ROMEO MITO (955)
FIAT 500 (312)
FIAT 500 C (312)
FIAT DOBLO (119)
FIAT DOBLO Cargo (223)
FIAT DOBLO Cassone / Furgonato / Promiscuo

OE
1204432
13117278
13256930
13283343
1539098
1571296

Alternator Charge Current [A]: 90
Belt Pulley [mm]: 54
Clamp: M8 B+M5 D+
Number of Ribs: 6
Pulleys: with multi-belt pulley
Voltage [V]: 14

Electrics

AL-173JM

Alternator



MINI MINI (R50, R53)

OE

12317790879
2706033050
2706033051
7790879

Alternator Charge Current [A]: 100
Belt Pulley [mm]: 60
Clamp: M8 [C-FR-IG-L]
Number of Ribs: 7
Pulleys: with free-wheel belt pulley
Voltage [V]: 12

AL-174JM

Alternator



ALFA ROMEO GT (937)
CITROEN BERLINGO (MF)
CITROEN BERLINGO Furgonato (M_)
CITROEN C5 Cassone / Furgonato / Promiscuo (DE_, RE_)
CITROEN C5 I (DC_)

OE

130722
3140068D00
3140068D00000
3140068D01
3140068D02
3140068D02000

Alternator Charge Current [A]: 150
Belt Pulley [mm]: 54
Clamp: M8 B+ M5 D+
Number of Ribs: 6
Pulleys: with free-wheel belt pulley
Voltage [V]: 14

AL-175JM

Alternator



TOYOTA YARIS (SCP1_, NLP1_, NCP1_)
TOYOTA YARIS VERSO (_NLP2_, _NCP2_)
TOYOTA YARIS VERSO VAN Furgonato (_P2_)

OE

2706021050
2706033010
2706033020
270603302084
2706033040
270603304084

Alternator Charge Current [A]: 90
Belt Pulley [mm]: 60
Clamp: M6 [FR-IG-L]
Number of Ribs: 5
Pulleys: with free-wheel belt pulley
Voltage [V]: 12

AL-176JM

Alternator



ALFA ROMEO 159 (939)
ALFA ROMEO 159 Sportwagon (939)
ALFA ROMEO BRERA
ALFA ROMEO MITO (955)
ALFA ROMEO SPIDER (939)
FIAT BRAVO II (198)

OE

1204433
13117340
1638098380
6204187
6204293
71755143

Alternator Charge Current [A]: 105
Belt Pulley [mm]: 62
Clamp: M8 B+ M5 D+
Number of Ribs: 6
Pulleys: with free-wheel belt pulley
Voltage [V]: 14

AL-177JM

Alternator



FORD TRANSIT Autobus (FD_-, FB_-, FS_-, FZ_-, FC_-,)
FORD TRANSIT Furgonato (FA_-,)
FORD TRANSIT Pianale piatto/Telaio (FM_-, FN_-,)
LTI TX

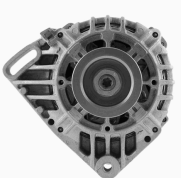
OE

1498518
1516508R
2C1T1 0300 BA
2C1T1 0300 BB
2C1T10300BA
2C1T10300BB

Alternator Charge Current [A]: 110
Belt Pulley [mm]: 59
Clamp: M6 B+ [L-DFM-S]
Number of Ribs: 7
Pulleys: with free-wheel belt pulley
Voltage [V]: 14

AL-178JM

Alternator



DACIA LOGAN (LS_)
DACIA LOGAN II
DACIA LOGAN MCV II
DACIA SANDERO
DACIA SANDERO II
NISSAN KUBISTAR Furgonato (X80)

OE

130712
2310000G1H
2310000GAT
2310000Q1C
2310000Q1D
2310000Q1H

Alternator Charge Current [A]: 95
Belt Pulley [mm]: 65
Clamp: M8 B+[L]
Number of Ribs: 3
Pulleys: with multi-belt pulley
Voltage [V]: 14

Electrics

AL-179JM

Alternator



FIAT DUCATO Furgonato (230L)
HYUNDAI GALLOPER I
HYUNDAI GALLOPER II (JK-01)
HYUNDAI H-1 / STAREX
HYUNDAI H-1 Furgonato
HYUNDAI H-1/H-200/SATELLITE Autobus

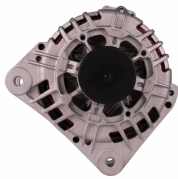
OE

233583
3730042540
3730042542
3730042860
3730042861
3730042862

Alternator Charge Current [A]: 90
Alternator Type: incl. vacuum pump
Belt Pulley [mm]: 76
Clamp: M6 B+ [L-S]
Number of Ribs: 2
Pulleys: Without multi-belt pulley
Voltage [V]: 14

AL-180JM

Alternator



DACIA LOGAN (LS_)
DACIA LOGAN EXPRESS (FS_)
DACIA LOGAN MCV (KS_)
DACIA LOGAN Pick-up (US_)
DACIA SANDERO
NISSAN ALMERA II (N16)

OE

09112331
1204189
1204489
2310000Q0B
2310000Q0BD
2310000Q1A

Alternator Charge Current [A]: 125
Belt Pulley [mm]: 54
Clamp: M8 B+[L]
Number of Ribs: 5
Pulleys: with free-wheel belt pulley
Voltage [V]: 12

AL-181JM

Alternator



TOYOTA YARIS (SCP1_, NLP1_, NCP1_)
TOYOTA YARIS VERSO (_NLP2_, _NCP2_)

OE

270600J010
270600J020
270600J030
270600J040
270600J04084
2706023040

Alternator Charge Current [A]: 90
Belt Pulley [mm]: 55
Clamp: M6 [FR-IG-L]
Number of Ribs: 6
Pulleys: with multi-belt pulley
Voltage [V]: 12

AL-182JM

Alternator



TOYOTA AVENSIS (T25_)
TOYOTA AVENSIS Station wagon (T25)
TOYOTA AVENSIS Tre volumi (T25)
TOYOTA AVENSIS VERSO (_CLM2_, _ACM2_)
TOYOTA COROLLA (ZZE12_, NDE12_, ZDE12_)
TOYOTA COROLLA (_E11_)

OE

2706027040
270602704084
2706027050
2706027060
2706027070
2706027090

Alternator Charge Current [A]: 130
Belt Pulley [mm]: 58
Clamp: M6 B+ [S-DFM-IG-L]
Number of Ribs: 5
Pulleys: with free-wheel belt pulley
Voltage [V]: 14

AL-183JM

Alternator



FORD MAVERICK (UDS, UNS)
FORD MAVERICK VAN
NISSAN PICK UP (D21)
NISSAN TERRANO II (R20)
NISSAN TERRANO Van (R20)

OE

1959007
1962155
2310069T60
231007F000
231007F001

Alternator Charge Current [A]: 70
Belt Pulley [mm]: 80
Clamp: M8
Number of Ribs: 1
Pulleys: Without multi-belt pulley
Voltage [V]: 12

AL-184JM

Alternator



DACIA LOGAN (LS_)
DACIA LOGAN EXPRESS (FS_)
DACIA LOGAN MCV (KS_)
DACIA LOGAN Pick-up (US_)
DACIA SANDERO
NISSAN KUBISTAR Furgonato (X80)

OE

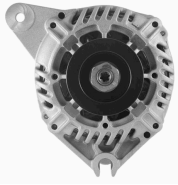
2310000QBC
27060165FL
6001548061
6601548061
7700101274
7700421477

Alternator Charge Current [A]: 98
Belt Pulley [mm]: 55
Clamp: M8 B+ [L-DFM]
Number of Ribs: 6
Pulleys: with multi-belt pulley
Voltage [V]: 14

Electrics

AL-185JM

Alternator



CITROEN AX (ZA-_)
 CITROEN SAXO (S0, S1)
 CITROEN SAXO Hatchback van (S3_)
 CITROEN XSARA (N1)
 CITROEN XSARA Break (N2)
 CITROEN ZX Break (N2)

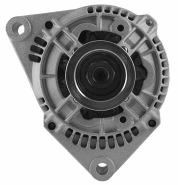
OE

231006F900
 5701A5
 5705-1M
 5705-1N
 5705-FF
 5705-X3

Alternator Charge Current [A]: 95
 Belt Pulley [mm]: 66
 Fastening Type: Double Pivot Lever
 New part without deposit:
 Number of Ribs: 5
 Position / Degree: L 55
 Pulleys: with belt pulley
 Pulleys: with v-ribbed belt pulley
 Rotation Direction: Clockwise rotation
 Supplementary Article/Supplementary Info:
 with integrated regulator
 Terminal/Clamp: Without revcounter
 connector
 Voltage [V]: 14

AL-186JM

Alternator



DAEWOO KORANDO (KJ)
 DAEWOO KORANDO Cabrio (KJ)
 DAEWOO MUSSO (FJ)
 MERCEDES-BENZ 190 (W201)
 MERCEDES-BENZ CLASSE C (W202)
 MERCEDES-BENZ CLASSE C Station wagon

OE

0081545102
 0081545202
 008154520280
 0081549602
 008154960280
 0081549702

Alternator Charge Current [A]: 90
 Belt Pulley [mm]: 55
 Clamp: M8 B+ M5 D+
 Number of Ribs: 6
 Pulleys: with multi-belt pulley
 Voltage [V]: 14

AL-187JM

Alternator



AUDI A1 (8X1, 8XF)
 AUDI A1 Sportback (8XA, 8XK)
 AUDI A3 (8P1)
 AUDI A3 Cabriolet (8P7)
 AUDI A3 Sportback (8PA)
 AUDI A4 (8E2, B6)

OE

021903026
 021903026A
 021903026B
 021903026G
 021903026GX
 021903026L

Alternator Charge Current [A]: 180
 Belt Pulley [mm]: 56
 Clamp: M8 B+ [L-DFM]
 Number of Ribs: 6
 Pulleys: with free-wheel belt pulley
 Voltage [V]: 14

AL-188JM

Alternator



FORD SCORPIO I (GAE, GGE)
 FORD SCORPIO I Station wagon (GGE)
 FORD SCORPIO I Tre volumi (GGE)
 FORD SCORPIO II (GFR, GGR)
 FORD SCORPIO II Station wagon (GNR, GGR)
 FORD TRANSIT Autobus (E...)

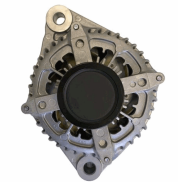
OE

1406060
 1406068
 1406091
 1406105
 1516401R
 1658022

Alternator Charge Current [A]: 70
 Alternator Type: incl. vacuum pump
 Belt Pulley [mm]: 67
 Clamp: M6 B+,M5 D+ M5 W
 Number of Ribs: 4
 Pulleys: with multi-belt pulley
 Voltage [V]: 14

AL-189JM

Alternator



ALFA ROMEO GIULIETTA (940)
 ALFA ROMEO TONALE (965_)
 FIAT 500L
 FIAT 500X
 FIAT TIPO (356)
 FIAT TIPO 2 volumi /Coda spiovente (356_)

OE

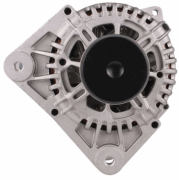
52067418
 52083172
 55280473
 68348758AB
 68457601AA
 71798219

Alternator Charge Current [A]: 180
 Belt Pulley [mm]: 54
 Clamp: M8 B+ [LIN]
 Number of Ribs: 6
 Pulleys: with free-wheel belt pulley
 Voltage [V]: 14

Electrics

AL-190JM

Alternator



DACIA DUSTER
 DACIA DUSTER Furgonato
 DACIA LOGAN (LS_)
 DACIA LOGAN EXPRESS (FS_)
 DACIA LOGAN MCV (KS_)
 DACIA LOGAN Pick-up (US_)

OE

2310000Q0G
 2310000Q2C
 2310000Q2R
 711368692
 7701478093
 7711368356

Alternator Charge Current [A]: 110
 Belt Pulley [mm]: 55
 Clamp: M8 B+ [L-DFM]
 Number of Ribs: 6
 Pulleys: with free-wheel belt pulley
 Voltage [V]: 14

AL-191JM

Alternator



CHEVROLET CAPTIVA (C100, C140)
 CHEVROLET CAPTIVA Van (C100)
 CHEVROLET EPICA (KL1_)
 CHEVROLET LACETTI (J200)
 CHEVROLET LACETTI Station wagon (J200)
 CHEVROLET NUBIRA Station wagon

OE

1202430
 1202485
 4805450
 4811550
 4817806
 95519866

Alternator Charge Current [A]: 120
 Belt Pulley [mm]: 56
 Clamp: M8 B+, F-L
 Number of Ribs: 6
 Pulleys: with free-wheel belt pulley
 Voltage [V]: 14

AL-192JM

Alternator



TOYOTA YARIS (SCP9_, NSP9_, KSP9_, NCP9_, ZSP9_)

OE

270600N011

Alternator Charge Current [A]: 90
 Belt Pulley [mm]: 62
 Clamp: M6 B+ [S-DFM-IG-L]
 Number of Ribs: 6
 Pulleys: with free-wheel belt pulley
 Voltage [V]: 14

AL-193JM

Alternator



TOYOTA YARIS (SCP9_, NSP9_, KSP9_, NCP9_, ZSP9_)

OE

270600Q030
 270600Q040
 270600Q04084
 270600Q060
 2706040010
 2706040020

Alternator Charge Current [A]: 90
 Belt Pulley [mm]: 57
 Clamp: M6 B+ [S-DFM-IG-L]
 Number of Ribs: 6
 Pulleys: with multi-belt pulley
 Voltage [V]: 14

AL-194JM

Alternator



DACIA DUSTER
 DACIA DUSTER Furgonato
 DACIA LOGAN (LS_)
 DACIA LOGAN EXPRESS (FS_)
 DACIA LOGAN MCV (KS_)
 DACIA LOGAN Pick-up (US_)

OE

2310000Q2H
 2310000QAB
 2310000QBA
 2310000QBB
 2310000QBJ
 2310000QBK

Alternator Charge Current [A]: 150
 Belt Pulley [mm]: 54
 Clamp: M8 B+ [L-DFM]
 Number of Ribs: 5
 Pulleys: with free-wheel belt pulley
 Voltage [V]: 14

AL-195JM

Alternator



TOYOTA YARIS (NHP13_, NSP13_, NCP13_, KSP13_, NLP13_)

OE

270600Q140
 2706040090

Alternator Charge Current [A]: 90
 Belt Pulley [mm]: 60
 Clamp: M6 B+ [LIN]
 Number of Ribs: 6
 Pulleys: with multi-belt pulley
 Voltage [V]: 14

Electrics

AL-196JM

Alternator



TOYOTA BELTA
TOYOTA VIOS/YARIS Tre volumi (ZSP9_, NCP9_)
TOYOTA YARIS (SCP9_, NSP9_, KSP9_, NCP9_, ZSP9_)

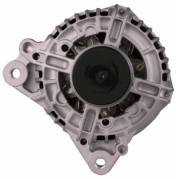
OE

270600J051
270600J061
270600J070

Alternator Charge Current [A]: 90
Belt Pulley [mm]: 55
Clamp: M6 B+ [S-DFM-IG-L]
Number of Ribs: 6
Pulleys: with multi-belt pulley
Voltage [V]: 14

AL-197JM

Alternator



AUDI A3 (8L1)
AUDI A3 (8P1)
AUDI A3 Cabriolet (8P7)
AUDI A4 (8D2, B5)
AUDI A4 (8E2, B6)
AUDI A4 Avant (8D5, B5)

OE

028903018K
028903029B
028903029BX
028903029C
028903029E
028903029EX

Alternator Charge Current [A]: 140
Belt Pulley [mm]: 56
Clamp: M8 B+ [L-DFM]
Number of Ribs: 5
Pulleys: with free-wheel belt pulley
Voltage [V]: 12

AL-198JM

Alternator



OPEL ASTRA G 2 volumi /Coda spiovente (F48_, F08_)
OPEL ASTRA G Cabriolet (F67)
OPEL ASTRA G Coupe (F07_)
OPEL ASTRA G Furgonato (F70)
OPEL ASTRA G Station wagon (F35_)

OE

074903025J
09117934
09133601
10457917
1204134
1204160

Alternator Charge Current [A]: 140
Belt Pulley [mm]: 50
Clamp: M8 B+ M5 D+
Number of Ribs: 6
Pulleys: with multi-belt pulley
Voltage [V]: 14

AL-199JM

Alternator



TOYOTA AURIS (NRE15_, ZZE15_, ADE15_, ZRE15_, NDE15_)
TOYOTA AURIS Furgonato (_E15_)
TOYOTA COROLLA Tre volumi (E15_)
TOYOTA URBAN CRUISER (NSP1_, NLP1_, ZSP1_, NCP11_)

OE

270600N040
270600N050
2706033100
270603310084

Alternator Charge Current [A]: 100
Belt Pulley [mm]: 58
Clamp: M6 B+ [RLO-DFM-IG-L]
Number of Ribs: 6
Pulleys: with free-wheel belt pulley
Voltage [V]: 14

AL-200JM

Alternator



CADILLAC BLS
CADILLAC BLS Wagon
OPEL ASTRA GTC J
OPEL ASTRA H (L48)
OPEL ASTRA H Furgonato (L70)
OPEL ASTRA H GTC (L08)

OE

1202115
1202116
1204422
1204427
13229990
13229991

Alternator Charge Current [A]: 140
Belt Pulley [mm]: 54
Clamp: M8 B+ [DFM-L]
Number of Ribs: 6
Pulleys: with free-wheel belt pulley
Voltage [V]: 14

AL-201JM

Alternator



FORD B-MAX (JK)
FORD B-MAX Van
FORD C-MAX II
FORD C-MAX II Van
FORD ECOSPORT
FORD FIESTA Tre volumi

OE

1469714
1685794
1698214
1871861
1928875
2119650

Alternator Charge Current [A]: 120
Belt Pulley [mm]: 49
Clamp: M8 B+ [LIN]
Number of Ribs: 6
Pulleys: with multi-belt pulley
Voltage [V]: 14

Electrics

AL-202JM

Alternator



AUDI A4 (8E2, B6)
 AUDI A4 (8EC, B7)
 AUDI A4 Avant (8E5, B6)
 AUDI A4 Avant (8ED, B7)
 AUDI A4 Cabriolet (8H7, B6, 8HE, B7)
 AUDI A6 (4B2, C5)

OE

06C903016B
 06C903016BX
 078903016S
 1516481R
 3140086CC0
 3140086CDD

Alternator Charge Current [A]: 150
 Belt Pulley [mm]: 54
 Clamp: M8 B+ M5 D+
 Number of Ribs: 6
 Pulleys: with multi-belt pulley
 Voltage [V]: 14

AL-203JM

Alternator



FORD FIESTA V (JH_, JD_)
 FORD FIESTA Van
 FORD FUSION (JU_)
 MAZDA 2 (DY)

OE

1140136
 1485762
 1519795
 1760757
 2S6T10300BA
 2S6T10300BB

Alternator Charge Current [A]: 150
 Belt Pulley [mm]: 54
 Clamp: M8 B+ [FR-SIG-A]
 Number of Ribs: 6
 Pulleys: with free-wheel belt pulley
 Voltage [V]: 14

AL-204JM

Alternator



FORD C-MAX (DM2)
 FORD FIESTA Furgonato (J5_, J3_)
 FORD FIESTA Furgonato (JV_)
 FORD FIESTA IV (JA_, JB_)
 FORD FIESTA V (JH_, JD_)
 FORD FIESTA Van

OE

1064383
 1070806
 1073090
 1090084
 1090085
 1097305

Alternator Charge Current [A]: 105
 Belt Pulley [mm]: 48
 Clamp: M8 B+ [FR-SIG-A]
 Number of Ribs: 6
 Pulleys: with multi-belt pulley
 Voltage [V]: 14

AL-205JM

Alternator



ALFA ROMEO 145 (930)
 ALFA ROMEO 146 (930)
 ALFA ROMEO 155 (167)
 CITROEN AX (ZA_)
 CITROEN BERLINGO (MF)
 CITROEN BERLINGO Furgonato (M_)

OE

1516404R
 1516411R
 1516417R
 3140065G00
 3140065G00000
 3292554

Alternator Charge Current [A]: 120
 Belt Pulley [mm]: 61
 Clamp: M8
 Number of Ribs: 6
 Pulleys: with multi-belt pulley
 Voltage [V]: 12

AL-206JM

Alternator



CITROEN BERLINGO (B9)
 CITROEN BERLINGO Furgonato (B9)
 CITROEN C3 II
 CITROEN C3 Picasso
 CITROEN C4 Coupé (LA_)
 CITROEN C4 Grand Picasso I (UA_)

OE

12317535098
 12317553009
 12317562388
 12317574365
 12317575650
 12317575779

Alternator Charge Current [A]: 150
 Belt Pulley [mm]: 49
 Clamp: M6 B+ [BSS]
 Number of Ribs: 6
 Pulleys: with free-wheel belt pulley
 Voltage [V]: 14

AL-207JM

Alternator



OPEL ASTRA CLASSIC (L48)
 OPEL ASTRA CLASSIC Station wagon
 OPEL ASTRA CLASSIC Tre volumi
 OPEL ASTRA F (56_, 57_)
 OPEL ASTRA F 2 volumi /Coda spiovente (53_,
 54_, 58_, 5

OE

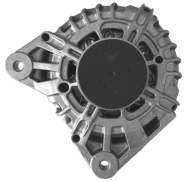
11209441
 1204108
 1204121
 12201087
 13125229
 13147093

Alternator Charge Current [A]: 120
 Belt Pulley [mm]: 54
 Clamp: M8
 Number of Ribs: 5
 Pulleys: with multi-belt pulley
 Voltage [V]: 12

Electrics

AL-208JM

Alternator



DACIA DOKKER
 DACIA DOKKER Express
 DACIA DUSTER
 DACIA DUSTER Furgonato
 DACIA LODGY
 DACIA LOGAN (LS_)

OE

2310007865
 2310007865A
 2310007865R
 231001318
 231001318R
 231003424

Alternator Charge Current [A]: 120
 Belt Pulley [mm]: 55
 Clamp: M8 B+ [LIN]
 Number of Ribs: 6
 Pulleys: with free-wheel belt pulley
 Voltage [V]: 14

AL-209JM

Alternator



FORD C-MAX (DM2)
 FORD FOCUS C-MAX
 FORD FOCUS II (DA_)
 FORD FOCUS II Station wagon (DA_)
 FORD FOCUS II Tre volumi (DA_)

OE

1302007
 132974
 1352425
 1352431
 1477740
 1677167

Alternator Charge Current [A]: 150
 Belt Pulley [mm]: 78
 Clamp: M8 B+ [FR-SIG-A]
 Pulleys: Without multi-belt pulley
 Voltage [V]: 14

AL-210JM

Alternator



CITROEN BERLINGO (B9)
 CITROEN BERLINGO (MF)
 CITROEN BERLINGO Furgonato (B9)
 CITROEN BERLINGO Furgonato (M_)
 CITROEN BERLINGO Pianale piatto/Telaio (B9)
 CITROEN C-CROSSER (EP_)

OE

1800A138
 56547528ON80
 570200
 5702000
 5702000000
 5702E2

Alternator Charge Current [A]: 180
 Belt Pulley [mm]: 54
 Clamp: M8 B+ [L-DFM]
 Number of Ribs: 6
 Pulleys: with free-wheel belt pulley
 Voltage [V]: 14

AL-211JM

Alternator



CITROEN JUMPY (U6U)
 CITROEN JUMPY Furgonato (BS_, BT_, BY_, BZ_)
 FIAT BRAVA (182)
 FIAT BRAVO I (182)
 FIAT DUCATO Autobus (230)
 FIAT DUCATO Furgonato (230L)

OE

1305709080
 130570908080
 1315060080
 131506008080
 46000357
 46231699

Alternator Charge Current [A]: 85
 Belt Pulley [mm]: 60
 Clamp: M8
 Number of Ribs: 6
 Pulleys: with multi-belt pulley
 Voltage [V]: 12

AL-212JM

Alternator



MERCEDES-BENZ CLASSE C (W204)
 MERCEDES-BENZ CLASSE C Coupé (C204)
 MERCEDES-BENZ CLASSE C T-Model (S204)
 MERCEDES-BENZ CLASSE E (W212)
 MERCEDES-BENZ CLASSE E Cabriolet (A207)
 MERCEDES-BENZ CLASSE E Coupé (C207)

OE

0009063622
 0009068802
 000906880280
 0131546802
 01315468020
 01315468020080

Alternator Charge Current [A]: 180
 Belt Pulley [mm]: 50
 Clamp: M8 B+ [LIN]
 Number of Ribs: 6
 Pulleys: with free-wheel belt pulley
 Voltage [V]: 14

AL-213JM

Alternator



OPEL ASTRA GTC J
 OPEL ASTRA J
 OPEL ASTRA J Cassone / Furgonato /
 Promiscuo (P10)
 OPEL ASTRA J Sports Tourer
 OPEL INSIGNIA

OE

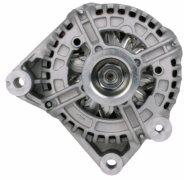
1202236
 1202423
 1204643
 13502583
 13579668
 95519835

Alternator Charge Current [A]: 100
 Belt Pulley [mm]: 54
 Clamp: M8 B+ [F-L]
 Number of Ribs: 6
 Pulleys: with free-wheel belt pulley
 Voltage [V]: 14

Electrics

AL-214JM

Alternator



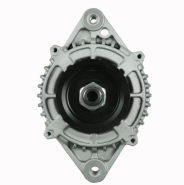
BMW 3 (E90)
BMW 3 Cabriolet (E93)
BMW 3 Coupé (E92)
BMW 3 Touring (E91)
BMW 5 (E60)
BMW 5 Touring (E61)

OE
12317788821
12317789981
12317789984
12317792072
12317797204AI02
12317797521

Alternator Charge Current [A]: 170
Belt Pulley [mm]: 53
Clamp: M6 B+ [COM-BSS]
Number of Ribs: 6
Pulleys: with multi-belt pulley
Voltage [V]: 14

AL-215JM

Alternator



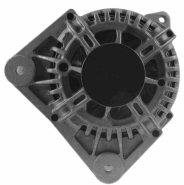
CHEVROLET MATIZ (M200, M250)
CHEVROLET SPARK
DAEWOO MATIZ
DAEWOO MATIZ (KLYA)
DAEWOO MATIZ Furgonato (KLA4)

OE
96566261
96566262
AB165104

Alternator Charge Current [A]: 65
Belt Pulley [mm]: 64
Clamp: M6 B [IG-L]
Number of Ribs: 3
Pulleys: with multi-belt pulley
Voltage [V]: 14

AL-216JM

Alternator



DACIA LOGAN (LS_)
PEUGEOT 308 (4A_, 4C_)
RENAULT CLIO Grandtour (KR0/1_)
RENAULT CLIO II (BB0/1/2_, CB0/1/2_)
RENAULT CLIO III (BR0/1, CR0/1)
RENAULT CLIO III Furgonato (SB_, SR_)

OE
231008578R
7701475896
7701476812
7711368380
7711368719
8200390675

Alternator Charge Current [A]: 100
Belt Pulley [mm]: 55
Clamp: M6 B+ [BSS]
Number of Ribs: 6
Pulleys: with free-wheel belt pulley
Voltage [V]: 14

AL-217JM

Alternator



AUDI A6 (4F2, C6)
AUDI A6 Allroad (4FH, C6)
AUDI A6 Avant (4F5, C6)
AUDI A8 (4E_)
AUDI Q7 (4L)
AUDI Q7 Van (4LB)

OE
059903015K
059903015R
059903015RX
059903017K
059903017KX
06C903016H

Alternator Charge Current [A]: 180
Belt Pulley [mm]: 57
Clamp: M6 B+ [COM-BSS]
Number of Ribs: 6
Pulleys: with multi-belt pulley
Voltage [V]: 14

AL-218JM

Alternator



SMART CABRIO (450)
SMART CITY-COUPE (450)
SMART FORTWO Cabrio (450)
SMART FORTWO Coupé (450)

OE
0004717V005
0004717V005000000
0004717V006
0111548002
011154800280
231000P501

Alternator Charge Current [A]: 85
Belt Pulley [mm]: 53
Clamp: M8 B+ [L-DFM]
Number of Ribs: 5
Pulleys: with multi-belt pulley
Voltage [V]: 14

AL-219JM

Alternator



AUDI A1 (8X1, 8XF)
AUDI A1 Sportback (8XA, 8XK)
AUDI A3 (8P1)
AUDI A3 Cabriolet (8P7)
AUDI A3 Sportback (8PA)
AUDI A4 Allroad (8KH, B8)

OE
03L903023
03L903023A
03L903023AX
03L903023X
03L903024
03L903024M

Alternator Charge Current [A]: 140
Belt Pulley [mm]: 56
Clamp: M8 B+ [LIN]
Number of Ribs: 6
Pulleys: with free-wheel belt pulley
Voltage [V]: 14

Electrics

AL-220JM

Alternator



SUZUKI JIMNY (FJ)

OE

3140084A00
3140084A00000
3140084A01
3140084A10
3140084A10000
3140084A11

Alternator Charge Current [A]: 100
Alternator Type: incl. vacuum pump
Belt Pulley [mm]: 54
Clamp: M8 B+ [L-R]
Number of Ribs: 6
Pulleys: with free-wheel belt pulley
Voltage [V]: 14

AL-221JM

Alternator



HYUNDAI ACCENT II (LC)
HYUNDAI ACCENT II Tre volumi (LC)
HYUNDAI ACCENT III (MC)
HYUNDAI ACCENT III Tre volumi (MC)
HYUNDAI ACCENT IV Tre volumi (RB)
HYUNDAI ELANTRA Tre volumi (HD)

OE

373002A000
373002A010
373002A011
373002A050
373002A100
373002A110

Alternator Charge Current [A]: 120
Belt Pulley [mm]: 57
Clamp: M8 B+ [L]
Number of Ribs: 5
Pulleys: with free-wheel belt pulley
Voltage [V]: 14

AL-222JM

Alternator



LIGIER JS RC
MICROCAR DUè
MICROCAR F8
MICROCAR M.GO
MICROCAR MC
MICROCAR MC1 / MC CITY

OE

0011573260-S
1157326
1157397
1758064010
3140060D10
3140060D10000

Alternator Charge Current [A]: 40
Belt Pulley [mm]: 63
Clamp: M6 [IG-L]
Number of Ribs: 1
Pulleys: Without multi-belt pulley
Voltage [V]: 12

AL-223JM

Alternator



OPEL ASTRA CLASSIC (L48)
OPEL ASTRA CLASSIC Station wagon
OPEL ASTRA CLASSIC Tre volumi
OPEL ASTRA H (L48)
OPEL ASTRA H Furgonato (L70)
OPEL ASTRA H GTC (L08)

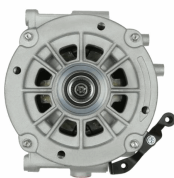
OE

1202424
1204197
1204424
1204425
1207197
1638095880

Alternator Charge Current [A]: 140
Belt Pulley [mm]: 60
Clamp: M8 B+ [F-L]
Number of Ribs: 6
Pulleys: with free-wheel belt pulley
Voltage [V]: 14

AL-224JM

Alternator



MERCEDES-BENZ CLASSE C (W203)
MERCEDES-BENZ CLASSE C Coupe (CL203)
MERCEDES-BENZ CLASSE C T-Model (S203)
MERCEDES-BENZ CLASSE E (W210)
MERCEDES-BENZ CLASSE E (W211)
MERCEDES-BENZ CLASSE E Station wagon

OE

00011501750
00011502550
0001501750
0001502450
0001502550
0011502550

Alternator Charge Current [A]: 190
Belt Pulley [mm]: 50
Clamp: M8 B+ [L-DFM]
Number of Ribs: 6
Pulleys: with free-wheel belt pulley
Voltage [V]: 12

AL-225JM

Alternator



FORD FOCUS (DAW, DBW)
FORD FOCUS Station wagon (DNW)
FORD FOCUS Tre volumi (DFW)
FORD TOURNEO CONNECT
FORD TRANSIT CONNECT (P65_, P70_, P80_)

OE

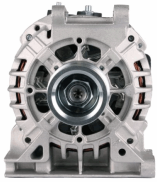
1229421
1376671
1376672
1376695
1429688
1429689

Alternator Charge Current [A]: 120
Belt Pulley [mm]: 78,5
Clamp: M6 + [S-SIG-FR]
Pulleys: Without multi-belt pulley
Voltage [V]: 14

Electrics

AL-226JM

Alternator



MERCEDES-BENZ CLASSE A (W168)
 MERCEDES-BENZ CLASSE A (W169)
 MERCEDES-BENZ Vaneo (414)

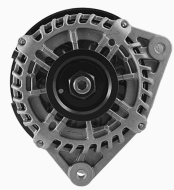
OE

0101543802
 010154380280
 0111543502
 011154350280
 0111545602
 011154560280

Alternator Charge Current [A]: 90
 Belt Pulley [mm]: 51
 Clamp: M8 B+M5 D+
 Number of Ribs: 5
 Pulleys: with multi-belt pulley
 Voltage [V]: 14

AL-227JM

Alternator



FORD FOCUS (DAW, DBW)
 FORD FOCUS Tre volumi (DFW)
 FORD TOURNEO CONNECT
 FORD TRANSIT CONNECT (P65_, P70_, P80_)

OE

1229421
 1376671
 1376672
 1376696
 1429689
 1464784

Alternator Charge Current [A]: 124
 Belt Pulley [mm]: 58
 Clamp: M6 B+ [S-SIG-FR]
 Number of Ribs: 6
 Pulleys: with multi-belt pulley
 Voltage [V]: 14

AL-228JM

Alternator



AUDI A3 (8P1)
 AUDI A3 Cabriolet (8P7)
 AUDI A3 Limousine (8VS)
 AUDI A3 Sportback (8PA)
 AUDI A4 (8D2, B5)
 AUDI A4 (8E2, B6)

OE

06B903015AB
 06B903016AA
 06B903016AB
 06B903016ABX
 06B903016AC
 06B903016AE

Alternator Charge Current [A]: 150
 Belt Pulley [mm]: 56
 Clamp: M8 B+ [L-DFM]
 Number of Ribs: 6
 Pulleys: with free-wheel belt pulley
 Voltage [V]: 14

AL-229JM

Alternator



MERCEDES-BENZ CLASSE C (W203)
 MERCEDES-BENZ CLASSE C Coupe (CL203)
 MERCEDES-BENZ CLASSE C T-Model (S203)
 MERCEDES-BENZ CLASSE E (W210)
 MERCEDES-BENZ CLASSE E (W211)
 MERCEDES-BENZ CLASSE E Pianale

OE

0111549802
 011154980280
 0121545902
 012154590280
 0121549802
 012154980280

Alternator Charge Current [A]: 200
 Belt Pulley [mm]: 50
 Clamp: M8 B+ [L-DFM]
 Number of Ribs: 6
 Pulleys: with free-wheel belt pulley
 Voltage [V]: 14

AL-230JM

Alternator



BMW 1 (E81)
 BMW 1 (E87)
 BMW 1 Cabriolet (E88)
 BMW 1 Coupé (E82)
 BMW 3 (E30)
 BMW 3 (E36)

OE

12317505899
 12317505903
 12317516104
 12317516106
 12317516490
 12317516723

Alternator Charge Current [A]: 150
 Belt Pulley [mm]: 49
 Clamp: M8 [COM/BSS-D]
 Number of Ribs: 6
 Pulleys: with multi-belt pulley
 Voltage [V]: 12

AL-231JM

Alternator



MERCEDES-BENZ CLASSE C (W203)
 MERCEDES-BENZ CLASSE C Coupe (CL203)
 MERCEDES-BENZ CLASSE C T-Model (S203)
 MERCEDES-BENZ CLASSE CLC (CL203)
 MERCEDES-BENZ CLASSE E (W211)
 MERCEDES-BENZ CLASSE E Pianale

OE

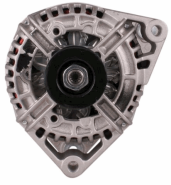
0121549902
 0131540002
 013154000280
 0141540002
 014154000280
 0141540702

Alternator Charge Current [A]: 200
 Belt Pulley [mm]: 50
 Clamp: M8 B+ [COM-DFM PLUG]
 Number of Ribs: 6
 Pulleys: with free-wheel belt pulley
 Voltage [V]: 14

Electrics

AL-232JM

Alternator



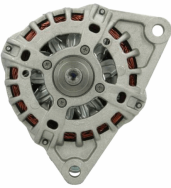
OPEL AGILA (A) (H00)
OPEL ASTRA CLASSIC (L48)
OPEL ASTRA CLASSIC Station wagon
OPEL ASTRA G 2 volumi /Coda spiovente (F48_, F08_)
OPEL ASTRA G CLASSIC (T98)

OE
1202347
13222930
13222931
13222931ZZ
1322930
4471005040

Alternator Charge Current [A]: 120
Belt Pulley [mm]: 54
Clamp: M8 B+ [L-DFM]
Number of Ribs: 5
Pulleys: with multi-belt pulley
Voltage [V]: 12

AL-233JM

Alternator



CITROEN JUMPER Autobus
CITROEN JUMPER Furgonato
CITROEN JUMPER Pianale piatto/Telaio
FIAT DUCATO Autobus (250)
FIAT DUCATO Furgonato (250)
FIAT DUCATO Pianale piatto/Telaio (250)

OE
1612612480
1613284880
504385137
504385138
71797575

Alternator Charge Current [A]: 150
Belt Pulley [mm]: 55
Clamp: M8 B+ [L-DFM]
Number of Ribs: 6
Pulleys: with free-wheel belt pulley
Voltage [V]: 14

AL-234JM

Alternator



CITROEN JUMPER Autobus
CITROEN JUMPER Furgonato
CITROEN JUMPER Pianale piatto/Telaio
FORD TOURNEO CUSTOM Autobus
FORD TRANSIT Autobus
FORD TRANSIT CUSTOM Autobus

OE
1606430480
1738112
1745661
1797966
1874992
1889371

Alternator Charge Current [A]: 150
Belt Pulley [mm]: 59
Clamp: M8 [LIN 1-Dummy]
Number of Ribs: 6
Pulleys: with free-wheel belt pulley
Voltage [V]: 12

AL-235JM

Alternator



AUDI A1 (8X1, 8XF)
AUDI A1 Sportback (8XA, 8XK)
AUDI A3 (8P1)
AUDI A3 Cabriolet (8P7)
AUDI A3 Sportback (8PA)
AUDI Q7 (4L)

OE
03C903023A
03C903023AX
03C903023C
03C903023CX
03C903023F
03C903023L

Alternator Charge Current [A]: 140
Belt Pulley [mm]: 49
Clamp: M8 B+ [L-DFM]
Number of Ribs: 6
Pulleys: with free-wheel belt pulley
Voltage [V]: 14

AL-236JM

Alternator



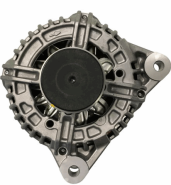
FORD TRANSIT Autobus
FORD TRANSIT Furgonato
FORD TRANSIT Pianale piatto/Telaio
LAND ROVER DEFENDER Cabrio (LD)
LAND ROVER DEFENDER Pianale piatto/Telaio (LD)

OE
1372737
1404792
1581844
1730987
1747017
1762863

Alternator Charge Current [A]: 150
Belt Pulley [mm]: 60
Clamp: M8 B+ [L-DFM]
Number of Ribs: 7
Pulleys: with free-wheel belt pulley
Voltage [V]: 14

AL-237JM

Alternator



MINI MINI (R50, R53)
MINI MINI (R56)
MINI MINI CLUBMAN (R55)

OE
12317794970
12317806779

Alternator Charge Current [A]: 145
Belt Pulley [mm]: 54
Clamp: M8 B+ [Com Plug 178]
Number of Ribs: 6
Pulleys: with free-wheel belt pulley
Voltage [V]: 14

Electrics

AL-238JM

Alternator



FORD FIESTA Furgonato (J5_, J3_)
 FORD FIESTA IV (JA_, JB_)
 FORD KA (RB_)
 FORD KA Van (RB)
 MAZDA 121 III (JASM, JBSM)
 MAZDA 121 III Cassone / coda spiovente (JASM,

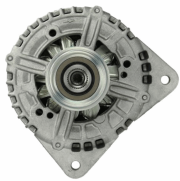
OE

1012870
 1018870
 1025545
 1025547
 1032333
 1036244

Alternator Charge Current [A]: 90
 Belt Pulley [mm]: 48
 Clamp: M8
 Number of Ribs: 6
 Voltage [V]: 12

AL-239JM

Alternator



SEAT ALHAMBRA (710)
 SKODA SUPERB (3T4)
 SKODA SUPERB Station wagon (3T5)
 VW CC (358)
 VW GOLF VI (5K1)
 VW PASSAT (362)

OE

03L903023B
 03L903023BX
 03L903023D
 03L903023DX
 03L903024F
 03L903024FX

Alternator Charge Current [A]: 180
 Belt Pulley [mm]: 56
 Clamp: M8 B+ [Com/Lin2-D]
 Number of Ribs: 6
 Pulleys: with free-wheel belt pulley
 Voltage [V]: 14

AL-240JM

Alternator



FORD KUGA I
 FORD MONDEO IV (BA7)
 FORD MONDEO IV Tre volumi (BA7)
 FORD MONDEO IV Turnier (BA7)
 FORD S-MAX (WA6)
 VOLVO C30

OE

1379701
 1388004
 1425016
 1790386
 2099442
 30659131

Alternator Charge Current [A]: 180
 Belt Pulley [mm]: 54
 Clamp: M8 B+ [COM-D]
 Number of Ribs: 5
 Pulleys: with free-wheel belt pulley
 Voltage [V]: 14

AL-241JM

Alternator



AUDI A1 (8X1, 8XF)
 AUDI A1 Sportback (8XA, 8XK)
 AUDI A3 (8P1)
 AUDI A3 Cabriolet (8P7)
 AUDI A3 Sportback (8PA)
 SEAT ALHAMBRA (710)

OE

03C903023S
 03C903023SX
 03C903023T
 03C903023TX
 03C903024F
 03C903024FX

Alternator Charge Current [A]: 140
 Belt Pulley [mm]: 50
 Clamp: M8 B+ [COM]
 Number of Ribs: 6
 Pulleys: with free-wheel belt pulley
 Voltage [V]: 14

AL-242JM

Alternator



NISSAN PULSAR 2 volumi /Coda spiovente (C13)
 NISSAN QASHQAI
 NISSAN QASHQAI (J11, J11_)
 NISSAN QASHQAI II VAN (J11_)
 RENAULT CLIO V (BF_)
 RENAULT GRAND SCÉNICC IV

OE

231004EA0A
 231004EA0AE
 231004EA0AF
 231006862R

Alternator Charge Current [A]: 150
 Belt Pulley [mm]: 55
 Clamp: M8 B+ [COM/LIN2A]
 Number of Ribs: 6
 Pulleys: with free-wheel belt pulley
 Voltage [V]: 14

AL-243JM

Alternator



AUDI A1 (8X1, 8XF)
 AUDI A1 Allstreet (GBH)
 AUDI A1 CITY CARVER (GBH)
 AUDI A1 Sportback (8XA, 8XK)
 AUDI A1 Sportback (GBA)
 AUDI A3 (8V1)

OE

04C903021A
 04C903023K
 04C903023KX
 04C903023L
 04C903023LX
 04C903023M

Alternator Charge Current [A]: 140
 Belt Pulley [mm]: 53
 Clamp: M8 B+
 Number of Ribs: 6
 Pulleys: with free-wheel belt pulley
 Voltage [V]: 14

Electrics

AL-244JM

Alternator



DACIA DOKKER
 DACIA DOKKER Express
 DACIA DUSTER
 DACIA LODGY
 DACIA LOGAN II
 DACIA LOGAN MCV II

OE

231002243
 231002243R
 231002854
 231002854R
 231006007
 231006007R

Alternator Charge Current [A]: 90
 Belt Pulley [mm]: 49
 Clamp: M8 B+ [COM/LIN2C]
 Number of Ribs: 7
 Pulleys: with free-wheel belt pulley
 Voltage [V]: 14

AL-245JM

Alternator



DACIA DUSTER
 DACIA LODGY
 DACIA LOGAN (LS_)
 RENAULT CLIO Grandtour (KR0/1_)
 RENAULT CLIO II (BB0/1/2_, CB0/1/2_)
 RENAULT CLIO II Furgonato (SB0/1/2_)

OE

231008578
 7701475896
 7711368103
 7711368380
 8200360480
 8200390675

Alternator Charge Current [A]: 120
 Belt Pulley [mm]: 55
 Clamp: M8 B+ [COM-D]
 Number of Ribs: 5
 Pulleys: with free-wheel belt pulley
 Voltage [V]: 14

AL-246JM

Alternator



OPEL COMBO Cassone / Furgonato / Promiscuo
 OPEL COMBO Tour
 OPEL CORSA C (F08, F68)
 OPEL CORSA C Furgonato (F08, W5L)
 OPEL MERIVA
 VAUXHALL ASTRA Mk V (H) 2 volumi /Coda

OE

1530089
 1638098780
 6204183
 6204251
 8973551980
 8973551981

Alternator Charge Current [A]: 100
 Belt Pulley [mm]: 60
 Clamp: M8 B+ [L-W Plug 21]
 Number of Ribs: 6
 Pulleys: with free-wheel belt pulley
 Voltage [V]: 14

AL-247JM

Alternator



CITROEN AX (ZA-_)
 CITROEN BERLINGO (MF)
 CITROEN BERLINGO Furgonato (M_)
 CITROEN BX (XB-_)
 CITROEN BX Break (XB-_)
 CITROEN C15 (VD-_)

OE

3140086CB0
 3140086CB000
 5701C4
 5701D9
 5705000
 57050000

Alternator Charge Current [A]: 80
 Belt Pulley [mm]: 61
 Clamp: M8
 Number of Ribs: 6
 Voltage [V]: 12

AL-248JM

Alternator



CITROEN BERLINGO (MF)
 CITROEN BERLINGO Furgonato (M_)
 CITROEN BX (XB-_)
 CITROEN BX Break (XB-_)
 CITROEN SAXO (S0, S1)
 CITROEN SAXO Hatchback van (S3_)

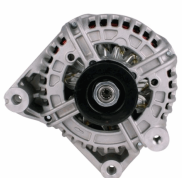
OE

57051J
 57051K
 57051L
 57051X
 57051Y
 5705FE

Alternator Charge Current [A]: 90
 Belt Pulley [mm]: 51
 Clamp: M8 B+ M5D+
 Number of Ribs: 5
 Voltage [V]: 14

AL-249JM

Alternator



BMW 3 (E46)
 BMW 3 Cabriolet (E46)
 BMW 3 Compact (E46)
 BMW 3 Coupe (E46)
 BMW 3 Touring (E46)
 BMW 5 (E39)

OE

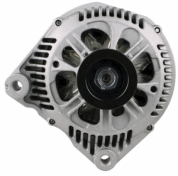
12137788247
 12312249966
 12312249969
 12312542343
 12317787346
 12317788222

Alternator Charge Current [A]: 150
 Belt Pulley [mm]: 53
 Clamp: M8 B+ [L-DFM]
 Number of Ribs: 5
 Voltage [V]: 14

Electrics

AL-250JM

Alternator



BMW 3 (E46)
BMW 3 Compact (E46)
BMW 3 Touring (E46)
BMW 5 (E39)
BMW 5 Touring (E39)
BMW 7 (E38)

OE

12311248296
12312247389
12312247405
12312248296
12312248297
12317792092

Alternator Charge Current [A]: 150
Belt Pulley [mm]: 53
Clamp: M8
Number of Ribs: 5
Voltage [V]: 12

AL-251JM

Alternator



MERCEDES-BENZ CLASSE C (W203)
MERCEDES-BENZ CLASSE C (W204)
MERCEDES-BENZ CLASSE C Coupé (C204)
MERCEDES-BENZ CLASSE C T-Model (S204)
MERCEDES-BENZ CLASSE E (W212)
MERCEDES-BENZ CLASSE E Cabriolet (A207)

OE

0009063000
0009067902
00090679020080
0141541502
01415415020080
0141542702

Alternator Charge Current [A]: 180
Belt Pulley [mm]: 50
Clamp: M8 B+ [COM/LIN2]
Number of Ribs: 6
Pulleys: with free-wheel belt pulley
Voltage [V]: 14

AL-252JM

Alternator



CITROEN BX (XB-_)
CITROEN CX II
CITROEN CX II Break
CITROEN EVASION (22, U6)
CITROEN JUMPER Autobus (230P)
CITROEN JUMPER Autobus (244, Z_)

OE

500362607
5702H7
57050000000
57056Q
57057U
57057V

Alternator Charge Current [A]: 120
Belt Pulley [mm]: 58
Clamp: M8
Number of Ribs: 6
Voltage [V]: 12

AL-253JM

Alternator



CITROEN NEMO Furgonato (AA_)
CITROEN NEMO Station wagon
PEUGEOT BIPPER (AA_)
PEUGEOT BIPPER Tepee

OE

5702H7
5705KC
9663647980
9664057480
9665605080

Alternator Charge Current [A]: 90
Belt Pulley [mm]: 54
Clamp: M8 B+ [L-D Plug 84]
Number of Ribs: 6
Pulleys: with free-wheel belt pulley
Voltage [V]: 14

AL-254JM

Alternator



AUDI A3 (8P1)
AUDI A3 Sportback (8PA)
AUDI A4 (8EC, B7)
AUDI TT (8J3)
AUDI TT Roadster (8J9)
SEAT CORDOBA (6L2)

OE

03G903023F
03G903023FX
03G903023G
03G903023GX
03G903023Q
03L03024G

Alternator Charge Current [A]: 180
Belt Pulley [mm]: 49
Clamp: M8 B+ [L-DFM]
Number of Ribs: 6
Pulleys: with free-wheel belt pulley
Voltage [V]: 14

AL-255JM

Alternator



MERCEDES-BENZ CLASSE A (W169)
MERCEDES-BENZ CLASSE B (W245)

OE

2261541202
2661540802
2661541002
2661541202
266154120280
A2261541202

Alternator Charge Current [A]: 90
Belt Pulley [mm]: 52
Clamp: M8 B+ [COM PLUG 184]
Number of Ribs: 5
Pulleys: with multi-belt pulley
Voltage [V]: 14

Electrics

AL-256JM

Alternator



BMW 1 (F20)
BMW 1 (F21)
BMW 2 Cabriolet (F23)
BMW 2 Coupé (F22)
BMW 3 (F30, F35, F80)
BMW 3 GRAN TURISMO (F34)

OE

12317823343
12317823344
12318519890
12318519891
12318578608
12318578609

Alternator Charge Current [A]: 180
Belt Pulley [mm]: 54
Clamp: M8 B+ [COM/LIN2]
Number of Ribs: 6
Pulleys: with free-wheel belt pulley
Voltage [V]: 12

AL-257JM

Alternator



OPEL MOVANO Combi (J9)
OPEL MOVANO Furgonato (F9)
RENAULT CLIO II (BB0/1/2_, CB0/1/2_)
RENAULT CLIO II Furgonato (SB0/1/2_)
RENAULT ESPACE III (JE0_)
RENAULT KANGOO (KC0/1_)

OE

112473
4402600
4404174
7700430183
7700430579
7700431944

Alternator Charge Current [A]: 120
Belt Pulley [mm]: 55
Clamp: M8
Number of Ribs: 6
Voltage [V]: 12

AL-258JM

Alternator



BMW 3 (E90)
BMW 3 Cabriolet (E93)
BMW 3 Coupé (E92)
BMW 3 Touring (E91)
BMW 5 (F10, F18)
BMW 5 Touring (F11)

OE

12318507624
12318509023
4732350
8507624

Alternator Charge Current [A]: 180
Belt Pulley [mm]: 53
Clamp: M8 B+ [COM7BSS]
Number of Ribs: 6
Pulleys: with free-wheel belt pulley
Voltage [V]: 14

AL-259JM

Alternator



FORD FOCUS III
FORD FOCUS III Tre volumi
FORD FOCUS III Turnier
FORD FOCUS IV
FORD FOCUS IV Turnier (HP)
FORD GALAXY

OE

2011355
2011356
2146821
2165474
2432355
2454938

Alternator Charge Current [A]: 240
Belt Pulley [mm]: 54
Clamp: Pin "30 M8 B+ [COM/L
Number of Ribs: 6
Pulleys: with free-wheel belt pulley
Voltage [V]: 14

AL-260JM

Alternator



DACIA DUSTER
DACIA LOGAN II
DACIA LOGAN MCV II
DACIA SANDERO II
MERCEDES-BENZ CITAN Combi (415)
MERCEDES-BENZ CITAN Furgonato (415)

OE

231002878R
231004554
231004554R
231007239
231007239R
4159063500

Alternator Charge Current [A]: 150
Belt Pulley [mm]: 55
Clamp: M8 B+ [COM/BSS]
Number of Ribs: 6
Pulleys: with free-wheel belt pulley
Voltage [V]: 14

AL-261JM

Alternator



NISSAN CABSTAR Pianale piatto/Telaio (F23, H41, H42)
NISSAN CABSTAR Pick-up
NISSAN TRADE Autobus
NISSAN TRADE Cassone / Furgonato / Promiscuo

OE

2310069T00
2310069T03
2310069T04
2310069T05
2310069T10
2310069T15

Alternator Charge Current [A]: 70
Alternator Type: incl. vacuum pump
Belt Pulley [mm]: 82
Clamp: M6
Number of Ribs: 1
Pulleys: with v-ribbed belt pulley
Voltage [V]: 14

Electrics

AL-262JM

Alternator



NISSAN INTERSTAR Autobus (X70)
NISSAN INTERSTAR Furgonato (X70)
NISSAN INTERSTAR Pianale piatto/Telaio
NISSAN PRIMASTAR Autobus (X83)
NISSAN PRIMASTAR Furgonato (X83)
NISSAN PRIMASTAR Pianale piatto/Telaio

OE

2310000Q0C
2310000Q1G
2310000Q1K
2310000QAP
2310000QAR
4412556

Alternator Charge Current [A]: 125
Belt Pulley [mm]: 50
Clamp: M8 B+ [L-D (Dummy) P
Number of Ribs: 6
Pulleys: with multi-belt pulley
Voltage [V]: 14

AL-263JM

Alternator



AUTOBIANCHI Y10
FIAT CINQUECENTO (170)
FIAT CINQUECENTO VAN (170)
FIAT PALIO (178BX)
FIAT PANDA (141A_)
FIAT PANDA Van (141_)

OE

46231658
46231659
46231693
46235343
46432317
46528046

Alternator Charge Current [A]: 65
Belt Pulley [mm]: 58
Clamp: M6
Number of Ribs: 4
Voltage [V]: 12

AL-264JM

Alternator



ALFA ROMEO 33 (905)
ALFA ROMEO 33 Sportwagon (905A)
ALFA ROMEO 6 (119)
ALFA ROMEO 75 (162B)
ALFA ROMEO 90 (162)
ALFA ROMEO ALFETTA (116)

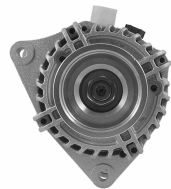
OE

116760506000
116760506100
2995028
38522236F
4152612
4242730

Alternator Charge Current [A]: 55
Belt Pulley [mm]: 70
Clamp: M6
Number of Ribs: 1
Voltage [V]: 12

AL-265JM

Alternator



FORD C-MAX (DM2)
FORD FOCUS C-MAX
FORD FOCUS II (DA_)
FORD FOCUS II Cassone / Furgonato /
Promiscuo
FORD FOCUS II Station wagon (DA_)

OE

1253795
1464564
1496231
1757293
30667017
4M5T10300LA

Alternator Charge Current [A]: 105
Clamp: M8 B+ [S-SIG-FR]
Pulleys: Without belt pulley
Voltage [V]: 14

AL-266JM

Alternator



CITROEN C1 (PM_, PN_)
PEUGEOT 107
PEUGEOT 207 SW (WK_)
TOYOTA AYGO (WNB1_, KGB1_)
TOYOTA AYGO Furgonato (_B1_)

OE

2706000020
270600Q010
270600Q011
270600Q020
270600Q021
270600Q050

Alternator Charge Current [A]: 80
Belt Pulley [mm]: 57
Clamp: M8 B+ M5 D+
Number of Ribs: 6
Pulleys: with multi-belt pulley
Voltage [V]: 14

AL-267JM

Alternator



FIAT 500 (312)
FIAT BRAVA (182)
FIAT BRAVO I (182)
FIAT BRAVO II (198)
FIAT DOBLO (119)
FIAT DOBLO Cargo (223)

OE

2310047N70
46231696
46407647
46416343
46420961
46436507

Alternator Charge Current [A]: 90
Belt Pulley [mm]: 60
Clamp: M8
Number of Ribs: 4
Voltage [V]: 12

Electrics

AL-268JM

Alternator



FIAT SEICENTO (187)
FIAT SEICENTO Van (187)

OE

46736968
51859049
71721144

Alternator Charge Current [A]: 90
Belt Pulley [mm]: 60
Number of Ribs: 4
Voltage [V]: 12

AL-269JM

Alternator



AUTOBIANCHI Y10
FERRARI 400 i
FERRARI 512 BB
FIAT 124
FIAT 124 Familiare
FIAT 124 Spider

OE

46207932
46231780
46445102
46446292
50012833
71780127

Alternator Charge Current [A]: 55
Belt Pulley [mm]: 60
Clamp: M6
Number of Ribs: 5
Voltage [V]: 12

AL-270JM

Alternator



HYUNDAI H100 Autobus (P)
HYUNDAI H100 Furgonato
MITSUBISHI GALANT IV (A16_)
MITSUBISHI GALANT IV (E3_A)
MITSUBISHI GALANT IV Tre volumi (E3_A)
MITSUBISHI L 200 (K3_T, K2_T, K1_T, K0_T)

OE

3730042200
3730042202
A001T01384
A002T01483
A002T01583
A002T01683

Alternator Charge Current [A]: 60
Belt Pulley [mm]: 84
Clamp: M6
Number of Ribs: 1
Voltage [V]: 12

AL-271JM

Alternator



MITSUBISHI PAJERO CLASSIC (V2_W)
MITSUBISHI PAJERO II Canvas Top (V2_W, V4_W)
MITSUBISHI PAJERO III (V7_W, V6_W)
MITSUBISHI PAJERO III Fuoristrada aperto (V6_W, V7_W)

OE

A003TN2481
A003TN2481A
A003TN2481AM
A003TN2481AT
A3TN2481
A3TN2481A

Alternator Charge Current [A]: 105
Belt Pulley [mm]: 67
Clamp: M8 B+ [L-S Plug7]
Number of Ribs: 6
Pulleys: with free-wheel belt pulley
Voltage [V]: 14

AL-272JM

Alternator



MITSUBISHI PAJERO II (V3_W)
MITSUBISHI PAJERO II (V3_W, V2_W, V4_W)
MITSUBISHI PAJERO III (V7_W, V6_W)
MITSUBISHI PAJERO III Fuoristrada aperto (V6_W, V7_W)

OE

A003T08779
A003T09198
A003T09199
A003TA3098
A003TA3098A
A003TA3098AM

Alternator Charge Current [A]: 140
Belt Pulley [mm]: 71
Clamp: M8
Number of Ribs: 2
Voltage [V]: 12

AL-273JM

Alternator



CITROEN C2 (JM_)
CITROEN C2 ENTERPRISE
CITROEN C3 I (FC_)
CITROEN C3 II
CITROEN C3 Pluriel (HB_)
PEUGEOT 1007 (KM_)

OE

5702K0
5705CW
5705EG
5705KW
9660055080
96660300280

Alternator Charge Current [A]: 80
Belt Pulley [mm]: 49
Clamp: M8 B+ [Com/Bss Plug
Number of Ribs: 6
Pulleys: with multi-belt pulley
Voltage [V]: 14

Electrics

AL-274JM

Alternator



NISSAN INTERSTAR Furgonato (X62B)
NISSAN INTERSTAR Pianale piatto/Telaio (X62B)
NISSAN NV400 Autobus
NISSAN NV400 Furgonato
NISSAN NV400 Pianale piatto/Telaio
OPEL MOVANO B Autobus

OE

1202345
1695662680
2310000Q3F
2310000Q4G
2310000Q8A
2310000Q9G

Alternator Charge Current [A]: 185
Belt Pulley [mm]: 49
Clamp: M8 B+ [COM-D PLUG 18
Number of Ribs: 7
Pulleys: with free-wheel belt pulley
Voltage [V]: 14

AL-275JM

Alternator



DAIHATSU FERROZA Hard Top (F300)
DAIHATSU FERROZA Soft Top (F300)
DAIHATSU HIJET Autobus (S85)
DAIHATSU HIJET Furgonato (S85)
DAIHATSU HIJET Pick-up
PIAGGIO PORTER Furgonato

OE

2706087112
2706087112000
2706087512
2706087512000
2706087601
2706087601000

Alternator Charge Current [A]: 50
Belt Pulley [mm]: 62
Clamp: M6
Number of Ribs: 7
Voltage [V]: 12

AL-276JM

Alternator



LANCIA KAPPA SW (838B)
TOYOTA AURIS (NRE15_, ZZE15_, ADE15_,
ZRE15_, NDE15_)
TOYOTA AURIS Furgonato (_E15_)
TOYOTA COROLLA (ZZE12_, NDE12_, ZDE12_)
TOYOTA COROLLA Station wagon (_E12J_)

OE

270600N020
270600N021
270600N02184
270600N030
270600N031
2706033070

Alternator Charge Current [A]: 115
Belt Pulley [mm]: 62
Clamp: M8 B+ [IG-S-L-M]
Number of Ribs: 6
Pulleys: with free-wheel belt pulley
Voltage [V]: 12

AL-277JM

Alternator



FORD C-MAX (DM2)
FORD FOCUS C-MAX
FORD FOCUS II (DA_)
FORD FOCUS II Cabriolet
FORD FOCUS II Station wagon (DA_)
FORD FOCUS II Tre volumi (DA_)

OE

1256552
1406100
1530299
1633079
1748625
30667071

Alternator Charge Current [A]: 150
Belt Pulley [mm]: 49
Clamp: M8
Number of Ribs: 6
Pulleys: with free-wheel belt pulley
Voltage [V]: 12

AL-278JM

Alternator



ALFA ROMEO 159 (939)
ALFA ROMEO 159 Sportwagon (939)
ALFA ROMEO BRERA
ALFA ROMEO SPIDER (939)
FIAT CROMA (194)

OE

50500728
51734825
51738425
71789547

Alternator Charge Current [A]: 150
Belt Pulley [mm]: 61
Clamp: M8 B+ [L-DFM]
Number of Ribs: 5
Pulleys: with free-wheel belt pulley
Voltage [V]: 14

AL-279JM

Alternator



ALFA ROMEO MITO (955)
CHRYSLER YPSILON
FIAT 500 (312)
FIAT 500 C (312)
FIAT DOBLO Cassone / Furgonato / Promiscuo
(263)

OE

1719539
2321307
51787196
51859041
51859061
51944893

Alternator Charge Current [A]: 120
Belt Pulley [mm]: 54
Clamp: M8 B+ M5 D+
Number of Ribs: 5
Pulleys: with multi-belt pulley
Voltage [V]: 14

Electrics

AL-280JM

Alternator



HONDA ACCORD VII (CL)
HONDA ACCORD VII Tourer (CM)
HONDA CIVIC VIII Tre volumi (FD, FA)
HONDA CR-V II (RD_)
HONDA CR-V III (RE)
HONDA FR-V (BE)

OE

31100RBDE01
31100RBDE02
31100RSRE01
CSC91
CSC914E
CSD86

Alternator Charge Current [A]: 130
Belt Pulley [mm]: 70
Clamp: M8 B+ [L-IG-FR-C PLU]
Number of Ribs: 7
Pulleys: with free-wheel belt pulley
Voltage [V]: 14

AL-281JM

Alternator



LAND ROVER DEFENDER Cabrio (LD)
LAND ROVER DEFENDER Pick-up (LD_)
LAND ROVER DEFENDER Station Wagon (LD)
LAND ROVER DISCOVERY II (LJ, LT)

OE

38522267F
ERR6999
ERR6999E
LR006190

Alternator Charge Current [A]: 120
Belt Pulley [mm]: 55
Clamp: M8
Number of Ribs: 7
Voltage [V]: 12

AL-282JM

Alternator



CHRYSLER GRAND VOYAGER V (RT)
DODGE NITRO
DODGE NITRO VAN (KA)
JEEP CHEROKEE (KK)
JEEP WRANGLER III (JK)
LANCIA VOYAGER MPV / Space wagon (RT)

OE

04727866AB
04727866AD
04801338AB
4727866AB
4727866AD
4727866AF

Alternator Charge Current [A]: 210
Belt Pulley [mm]: 52
Clamp: M8 [Plug 275 (D-SIG-
Number of Ribs: 6
Pulleys: with free-wheel belt pulley
Voltage [V]: 12

AL-283JM

Alternator



FIAT BRAVO II (198)
FIAT IDEA
LANCIA MUSA (350)

OE

51727338
51859058

Alternator Charge Current [A]: 90
Belt Pulley [mm]: 53
Clamp: M8 B+ M5 D+
Number of Ribs: 6
Pulleys: with free-wheel belt pulley
Voltage [V]: 14

AL-284JM

Alternator



ALFA ROMEO GIULIETTA (940)
ALFA ROMEO GIULIETTA Furgonato (940_)
FIAT DOBLO Cassone / Furgonato / Promiscuo (263)
FIAT DOBLO MPV / Space wagon (152, 263)
FIAT DOBLO Pianale piatto/Telaio (263)

OE

1202273
1202453
1203273
51808561
51863675
51943777

Alternator Charge Current [A]: 150
Belt Pulley [mm]: 54
Clamp: M8 B+ M5 D+
Number of Ribs: 6
Pulleys: with free-wheel belt pulley
Voltage [V]: 14

AL-285JM

Alternator



CHEVROLET AVEO Tre volumi (T250, T255)
CHEVROLET MATIZ (M200, M250)
CHEVROLET SPARK
CHEVROLET SPARK (M300)
DAEWOO MATIZ
DAEWOO MATIZ (KLYA)

OE

219170
219251
9372008500
96314258
96380673
96518124

Alternator Charge Current [A]: 65
Belt Pulley [mm]: 66
Clamp: M6
Number of Ribs: 1
Voltage [V]: 12

Electrics

AL-286JM

Alternator



FORD FIESTA V (JH_, JD_)
 FORD FIESTA Van
 FORD FOCUS (DAW, DBW)
 FORD FOCUS Cassone / Furgonato / Promiscuo (DNW)
 FORD FUSION (JU_)

OE

1229424
 1451865
 1486810
 1718566
 1718575
 1718576

Alternator Charge Current [A]: 90
 Belt Pulley [mm]: 48
 Clamp: M8
 Number of Ribs: 6
 Voltage [V]: 12

AL-287JM

Alternator



HYUNDAI ATOS (MX)
 HYUNDAI GETZ (TB)
 HYUNDAI i10 (PA)
 KIA PICANTO (BA)
 SEAT CORDOBA (6L2)
 SEAT IBIZA IV (6L1)

OE

03D903025H
 03D903025HX
 3730002101
 3730002503
 3730002550
 3730002700

Alternator Charge Current [A]: 70
 Belt Pulley [mm]: 60
 Clamp: M8
 Number of Ribs: 4
 Voltage [V]: 12

AL-288JM

Alternator



FORD MONDEO III (B5Y)
 FORD MONDEO III Station wagon (BWY)
 FORD MONDEO III Tre volumi (B4Y)
 JAGUAR X-TYPE (CF1)
 JAGUAR X-TYPE Estate

OE

1120211
 1124015
 1131820
 1140696
 1151212
 1211891

Alternator Charge Current [A]: 90
 Belt Pulley [mm]: 53
 Clamp: M6 B+ [S-SIG-FR]
 Number of Ribs: 6
 Pulleys: with multi-belt pulley
 Voltage [V]: 14