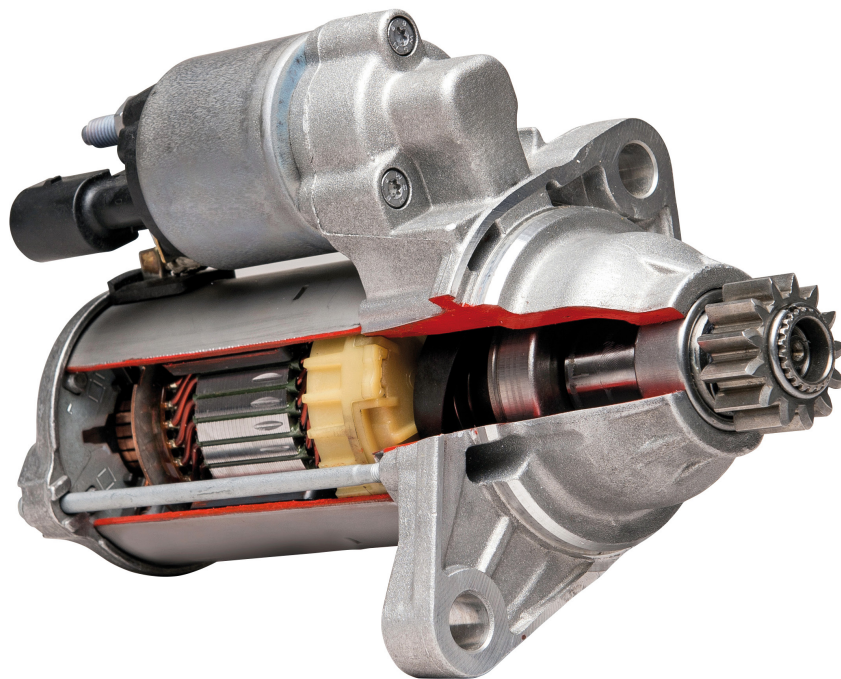


**JapKo**®

**STARTERS**  
**MOTORINI**  
**AVVIAMENTO**



[www.japko.it](http://www.japko.it)

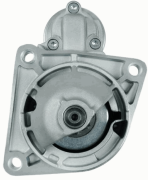
**CATALOGUE**  
FOR CARS AND  
COMMERCIAL VEHICLES

**CATALOGO**  
PER AUTOMOBILI E VEICOLI  
COMMERCIALI

## Electrics

### MT-101JM

#### Starter



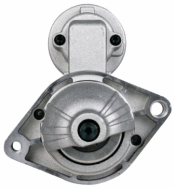
ALFA ROMEO 145 (930)  
ALFA ROMEO 146 (930)  
ALFA ROMEO 147 (937)  
ALFA ROMEO 156 (932)  
ALFA ROMEO 156 Sportwagon (932)  
ALFA ROMEO 159 (939)

**OE**  
1202282  
3110079J00  
3110079J00000  
31100H79J00  
31100H79J00000  
31100T79J00

Clamp: Pin "30" M8 B+  
Clamp: Pin "50" M6  
Flange [mm]: 81,5  
Number of mounting bores: 3  
Number of Teeth: 9  
Number of Thread Bores: 0  
Rated Power [kW]: 2  
Rotation Direction: Clockwise rotation  
Voltage [V]: 12

### MT-102JM

#### Starter



ALFA ROMEO MITO (955)  
CITROEN NEMO Station wagon  
FIAT 500 (312)  
FIAT 500 C (312)  
FIAT DOBLO (119)  
FIAT FIORINO MPV / Space wagon (225\_)

**OE**  
09115193  
1202265  
1202499  
1571299  
1612794380  
1637179980

Clamp: M8 B+  
Flange [mm]: 64  
Number of mounting bores: 2  
Number of Teeth: 9  
Number of Thread Bores: 1  
Rated Power [kW]: 1,3  
Rotation Direction: Clockwise rotation  
Voltage [V]: 12

### MT-103JM

#### Starter



ABARTH 124 Spider (348\_)  
ABARTH 500 (312)  
ABARTH 500C (312)  
ABARTH PUNTO EVO (199)  
ALFA ROMEO GIULIETTA (940)  
ALFA ROMEO MITO (955)

**OE**  
1202291  
1202503  
136908  
1542468  
1567033  
1726802

Clamp: M8 B+  
Flange [mm]: 64  
Number of mounting bores: 3  
Number of Teeth: 10  
Number of Teeth: 8  
Number of Teeth: 9  
Number of Thread Bores: 1  
Rated Power [kW]: 1  
Rotation Direction: Clockwise rotation  
Voltage [V]: 12

### MT-104JM

#### Starter



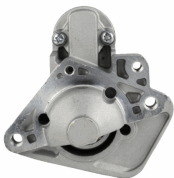
FIAT PALIO (178BX)  
FIAT PALIO Weekend (178DX)  
FIAT PUNTO (188)  
FIAT SEICENTO (187)  
FIAT SIENA (178\_)  
LANCIA Y (840A)

**OE**  
136910  
2506910  
46429594  
46473785  
46518059  
46548653

Clamp: M8, Pin "50" M6  
Flange [mm]: 64  
Number of mounting bores: 3  
Number of Teeth: 10  
Number of Teeth: 8  
Number of Teeth: 9  
Number of Thread Bores: 1  
Rated Power [kW]: 0,8  
Rotation Direction: Clockwise rotation  
Voltage [V]: 12

### MT-105JM

#### Starter



DACIA LOGAN (LS\_)  
DACIA LOGAN II  
DACIA LOGAN MCV (KS\_)  
DACIA LOGAN MCV II  
DACIA LOGAN Pick-up (US\_)  
DACIA SANDERO

**OE**  
2330000Q0F  
2330000Q1H  
2330000Q1M  
2330000Q2C  
2330000Q6L  
2330000QA0

Clamp: M8 B+, Pin "50" Plug  
Flange [mm]: 63  
Number of mounting bores: 3  
Number of Teeth: 10  
Number of Teeth: 12  
Number of Teeth: 13  
Number of Thread Bores: 3  
Rated Power [kW]: 1,4  
Rotation Direction: Clockwise rotation  
Voltage [V]: 12

## Electrics

### MT-106JM

#### Starter



IVECO MASSIF Pick-up  
IVECO MASSIF Station Wagon

#### OE

1516689R  
2994100  
2995990  
2997002  
42498717  
500059592

Clamp: M8, Pin "50" M6  
Flange [mm]: 81,5  
Number of mounting bores: 3  
Number of Teeth: 9  
Number of Thread Bores: 3  
Rated Power [kW]: 2,3  
Rotation Direction: Clockwise rotation  
Voltage [V]: 12

### MT-107JM

#### Starter



FORD FIESTA V (JH\_, JD\_)  
FORD FIESTA VI  
FORD FUSION (JU\_)  
MAZDA 2 (DY)

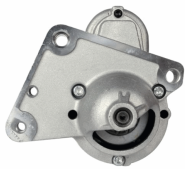
#### OE

1140757  
1144505  
1350459  
1366195  
1368974  
1483817

Clamp: M8, Pin "50" M6  
Number of mounting bores: 3  
Number of Teeth: 12  
Number of Thread Bores: 2  
Rated Power [kW]: 1,4  
Rotation Direction: Clockwise rotation  
Voltage [V]: 12

### MT-108JM

#### Starter



CITROEN BERLINGO (B9)  
CITROEN BERLINGO (K9)  
CITROEN BERLINGO (MF)  
CITROEN C-ELYSEE  
CITROEN C1 (PM\_, PN\_)  
CITROEN C2 (JM\_)

#### OE

00005802AZ  
00005802FG  
1213257  
1638115880  
28100YV010  
28100YV011

Clamp: Pin "30" M8 B+  
Clamp: Pin "50" M5  
Number of mounting bores: 4  
Number of Teeth: 11  
Number of Teeth: 12  
Number of Thread Bores: 2  
Rated Power [kW]: 1,4  
Rotation Direction: Clockwise rotation  
Voltage [V]: 12

### MT-109JM

#### Starter



CITROEN JUMPER Autobus  
CITROEN JUMPER Autobus (230P)  
CITROEN JUMPER Autobus (244, Z\_)  
CITROEN JUMPER Furgonato  
CITROEN JUMPER Furgonato (230L)  
CITROEN JUMPER Furgonato (244)

#### OE

130019808  
1300198080  
130019808080  
131955508  
1319555080  
1319555088

Clamp: M8, Pin "50" M6  
Flange [mm]: 81,5  
Number of mounting bores: 3  
Number of Teeth: 9  
Number of Thread Bores: 3  
Rated Power [kW]: 2,5  
Rotation Direction: Clockwise rotation  
Voltage [V]: 12

### MT-110JM

#### Starter



CITROEN JUMPER Autobus (230P)  
CITROEN JUMPER Autobus (244, Z\_)  
CITROEN JUMPER Furgonato (230L)  
CITROEN JUMPER Furgonato (244)  
CITROEN JUMPER Pianale piatto/Telaio (230)  
CITROEN JUMPER Pianale piatto/Telaio (244)

#### OE

1319555080  
1331329080  
134705808  
1347058080  
134705880  
1524014R

Clamp: M8  
Flange [mm]: 82  
Number of mounting bores: 3  
Number of Teeth: 9  
Number of Thread Bores: 3  
Rated Power [kW]: 2,5  
Rotation Direction: Clockwise rotation  
Voltage [V]: 12

## Electrics

### MT-111JM

#### Starter



CITROEN BERLINGO (MF)  
CITROEN BX (XB-\_)  
CITROEN BX Break (XB-\_)  
CITROEN C-CROSSER (EP\_)  
CITROEN C15 Station wagon  
CITROEN C4 Coupé (LA\_)

#### OE

1320921080  
1332419080  
1502453001E  
151412580  
1516680R  
1516741R

Clamp: Pin "30" M8 B+  
Clamp: Pin "50" M5  
Number of mounting bores: 3  
Number of Teeth: 11  
Number of Thread Bores: 2  
Rated Power [kW]: 1,9  
Rotation Direction: Clockwise rotation  
Voltage [V]: 12

### MT-112JM

#### Starter



CITROEN BERLINGO (MF)  
CITROEN BX (XB-\_)  
CITROEN BX Break (XB-\_)  
CITROEN C-CROSSER (EP\_)  
CITROEN C15 Station wagon  
CITROEN C4 Coupé (LA\_)

#### OE

0016531  
1005831356  
1319121080  
1342792080  
1516776R  
1516779R

Clamp: M8, Pin "50" M5  
Flange [mm]: 66  
Number of mounting bores: 3  
Number of Teeth: 10  
Number of Teeth: 11  
Number of Teeth: 12  
Number of Teeth: 13  
Number of Thread Bores: 3  
Rated Power [kW]: 1,4  
Rotation Direction: Clockwise rotation  
Voltage [V]: 12

### MT-113JM

#### Starter



MERCEDES-BENZ CLASSE C (W202)  
MERCEDES-BENZ CLASSE C (W203)  
MERCEDES-BENZ CLASSE C Coupe (CL203)  
MERCEDES-BENZ CLASSE C Station wagon (S202)  
MERCEDES-BENZ CLASSE C T-Model (S203)

#### OE

0031515001  
003151500180  
0041512101  
004151210180  
0041513001  
004151300180

Clamp: M8  
Flange [mm]: 82,5  
Number of mounting bores: 2  
Number of Teeth: 10  
Number of Thread Bores: 2  
Rated Power [kW]: 2  
Rotation Direction: Clockwise rotation  
Voltage [V]: 12

### MT-114JM

#### Starter



FORD FIESTA IV (JA\_, JB\_)  
FORD FOCUS (DAW, DBW)  
FORD FOCUS Station wagon (DNW)  
FORD FOCUS Tre volumi (DFW)  
FORD PUMA (EC\_)  
MAZDA 121 III (JASM, JBSM)

#### OE

0018882  
1004565  
1004566  
1011330  
1011331  
1018882

Clamp: Pin "50" M6  
Flange [mm]: 76  
Number of mounting bores: 3  
Number of Teeth: 10  
Number of Thread Bores: 3  
Rated Power [kW]: 1,1  
Rotation Direction: Clockwise rotation  
Voltage [V]: 12

### MT-115JM

#### Starter



CITROEN AX (ZA-\_)  
CITROEN BERLINGO (B9)  
CITROEN BERLINGO (MF)  
CITROEN C-ELYSEE  
CITROEN C2 (JM\_)  
CITROEN C3 I (FC\_)

#### OE

1613850  
1638115980  
5802000000000  
580298  
580299  
5802A0

Clamp: M8, Pin "50" M5  
Number of mounting bores: 3  
Number of Teeth: 9  
Number of Thread Bores: 1  
Rated Power [kW]: 0,9  
Rotation Direction: Clockwise rotation  
Voltage [V]: 12

## Electrics

### MT-116JM

#### Starter



ALFA ROMEO 159 (939)  
ALFA ROMEO 159 Sportwagon (939)  
ALFA ROMEO BRERA  
ALFA ROMEO SPIDER (939)  
CHRYSLER DELTA  
FIAT BRAVO II (198)

#### OE

0001Y03631  
00K68080459AA  
3110055L00  
3110055L00000  
3110055L01  
31100T55L00

Clamp: M8 B+, Pin "50" M6  
Flange [mm]: 76  
Number of mounting bores: 3  
Number of Teeth: 10  
Number of Teeth: 11  
Number of Thread Bores: 0  
Rated Power [kW]: 1,4  
Rotation Direction: Clockwise rotation  
Voltage [V]: 12

### MT-117JM

#### Starter



FIAT PALIO (178BX)  
FIAT PALIO Weekend (178DX)  
FIAT PANDA (141A\_)  
FIAT PUNTO (188)  
FIAT SEICENTO (187)  
FIAT SIENA (178\_)

#### OE

46432262  
46465475  
46758241  
46763530  
46765839  
46796553

Clamp: M8, Pin "50" M6  
Flange [mm]: 64  
Number of mounting bores: 3  
Number of Teeth: 9  
Number of Thread Bores: 2  
Rated Power [kW]: 0,8  
Rotation Direction: Clockwise rotation  
Voltage [V]: 12

### MT-118JM

#### Starter



LAND ROVER DEFENDER Cabrio (LD)  
LAND ROVER DEFENDER Pick-up (LD\_)  
LAND ROVER DEFENDER Station Wagon (LD)

#### OE

1372739  
1375378  
1385378  
1574338  
1606413580  
1638117780

Clamp: Pin "30" M8 B+  
Clamp: Pin "50" M6  
Flange [mm]: 89  
Number of mounting bores: 2  
Number of Teeth: 12  
Number of Thread Bores: 0  
Rated Power [kW]: 2  
Rotation Direction: Clockwise rotation  
Voltage [V]: 12

### MT-119JM

#### Starter



FORD C-MAX (DM2)  
FORD C-MAX II  
FORD FOCUS C-MAX  
FORD FOCUS II (DA\_)  
FORD FOCUS II Station wagon (DA\_)  
FORD FOCUS II Tre volumi (DA\_)

#### OE

1229427  
1233234  
1254222  
1368970  
1469712  
1707507

Clamp: Pin "30" M8 B+  
Clamp: Pin "50" M6  
Number of mounting bores: 3  
Number of Teeth: 11  
Number of Thread Bores: 2  
Rated Power [kW]: 1,2  
Rotation Direction: Clockwise rotation  
Voltage [V]: 12

### MT-120JM

#### Starter



AUDI A1 (8X1, 8XF)  
AUDI A1 Sportback (8XA, 8XK)  
AUDI A3 (8P1)  
AUDI A3 Cabriolet (8P7)  
AUDI A3 Sportback (8PA)  
AUDI Q3 (8U)

#### OE

02M911023N  
02M911023NX  
02M911023P  
02M911023PX  
02M911024  
02M911024A

Clamp: Pin "50" Plug  
Flange [mm]: 76  
Number of mounting bores: 2  
Number of Teeth: 11  
Number of Teeth: 12  
Number of Thread Bores: 0  
Rated Power [kW]: 2  
Rotation Direction: Anti-clockwise rotation  
Voltage [V]: 12

## Electrics

### MT-121JM

#### Starter



FORD ESCORT CLASSIC (AAL, ABL)  
 FORD ESCORT V (GAL)  
 FORD ESCORT V Station wagon (GAL, AVL)  
 FORD ESCORT VI (GAL)  
 FORD ESCORT VI Station wagon (GAL)  
 FORD ESCORT VI Tre volumi (GAL)

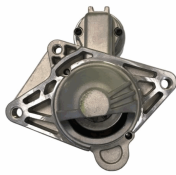
#### OE

1008813  
 1008835  
 1027300  
 1058429  
 1061267  
 1061627

Clamp: M8, Pin "50" M6  
 Flange [mm]: 76  
 Number of mounting bores: 3  
 Number of Teeth: 10  
 Number of Thread Bores: 3  
 Rated Power [kW]: 2,2  
 Rotation Direction: Clockwise rotation  
 Voltage [V]: 12

### MT-122JM

#### Starter



MERCEDES-BENZ CLASSE X (470)  
 NISSAN NAVARA Pick-up (D23)  
 NISSAN QASHQAI / QASHQAI +2 (J10, JJ10)  
 NISSAN X-TRAIL (T31)  
 RENAULT ALASKAN  
 RENAULT ESPACE IV (JK0/1\_)

#### OE

1202193  
 1202204  
 1202395  
 1638118680  
 2330000Q0A  
 2330000Q0D

Clamp: Pin "30" M8 B+  
 Clamp: Pin "50" M5  
 Flange [mm]: 76  
 Number of mounting bores: 3  
 Number of Teeth: 10  
 Number of Teeth: 11  
 Number of Thread Bores: 0  
 Rated Power [kW]: 2,2  
 Rotation Direction: Clockwise rotation  
 Voltage [V]: 12

### MT-123JM

#### Starter



HYUNDAI GALLOPER II (JK-01)  
 HYUNDAI TERRACAN (HP)  
 MITSUBISHI GALANT VI (EA\_)  
 MITSUBISHI GALANT VI Station wagon (EA\_)  
 MITSUBISHI L 200 (K7\_T, K6\_T)  
 MITSUBISHI LANCER V (CB/D\_A)

#### OE

23300FY500  
 3610042250  
 3610042350  
 3610042450  
 DMX140056  
 M002T84170

Clamp: M10  
 Flange [mm]: 77  
 Number of mounting bores: 2  
 Number of Teeth 1: 12  
 Number of Teeth: 10  
 Number of Thread Bores: 2  
 Rated Power [kW]: 2,2  
 Rotation Direction: Clockwise rotation  
 Voltage [V]: 12

### MT-124JM

#### Starter



CITROEN C1 (PM\_, PN\_)  
 CITROEN C1 II  
 PEUGEOT 107  
 PEUGEOT 108  
 TOYOTA AYGO (PAB4\_, KGB4\_)  
 TOYOTA AYGO (WNB1\_, KGB1\_)

#### OE

1612092980  
 1612350580  
 281000Q012  
 281000Q012C  
 281000Q012D  
 281000Q021

Clamp: Pin "30" M8 B+  
 Clamp: Pin "50" M5  
 Flange [mm]: 74  
 Number of mounting bores: 2  
 Number of Teeth: 8  
 Number of Thread Bores: 1  
 Rated Power [kW]: 1,1  
 Rotation Direction: Clockwise rotation  
 Voltage [V]: 12

### MT-125JM

#### Starter



FIAT CINQUECENTO (170)  
 FIAT PANDA (141A\_)  
 FIAT SEICENTO (187)  
 FIAT UNO (146A/E)  
 LANCIA A 112  
 SEAT FURA (025A)

#### OE

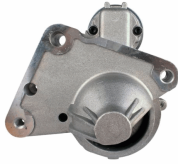
0003914191  
 0003974104  
 0011891  
 0014710  
 127908000AX  
 3914191

Clamp: M8  
 Flange [mm]: 62  
 Number of mounting bores: 3  
 Number of Teeth: 9  
 Number of Thread Bores: 3  
 Rated Power [kW]: 0,8  
 Rotation Direction: Clockwise rotation  
 Voltage [V]: 12

## Electrics

### MT-126JM

#### Starter



CITROEN BERLINGO (B9)  
CITROEN C1 (PM\_, PN\_)  
CITROEN C2 (JM\_)  
CITROEN C3 I (FC\_)  
CITROEN C3 II  
CITROEN C3 III (SX)

#### OE

02T911023Q  
28100YV020  
3110073J00  
3647959  
5645100680  
580228

Clamp: M8  
Number of mounting bores: 3  
Number of Teeth: 12  
Number of Thread Bores: 2  
Rated Power [kW]: 1,5  
Rotation Direction: Clockwise rotation  
Voltage [V]: 12

### MT-127JM

#### Starter



AUDI A3 (8P1)  
AUDI A3 Cabriolet (8P7)  
AUDI A3 Sportback (8PA)  
SEAT ALTEA (5P1)  
SEAT ALTEA XL (5P5, 5P8)  
SEAT CORDOBA (6L2)

#### OE

02Z911023B  
02Z911023F  
02Z911023FX  
02Z911023H  
02Z911023HX  
02Z911024J

Clamp: Pin "30" M8 B+  
Clamp: Pin "50" Plug  
Flange [mm]: 76  
Number of mounting bores: 3  
Number of Teeth: 10  
Number of Thread Bores: 0  
Rated Power [kW]: 2  
Rotation Direction: Anti-clockwise rotation  
Voltage [V]: 12

### MT-128JM

#### Starter



CHEVROLET CORSA Pick-up  
CHEVROLET CORSA Station wagon  
CHEVROLET CORSA Tre volumi  
CHEVROLET TRAX  
HONDA CIVIC VII Hatchback (EU, EP, EV)  
OPEL ASTRA CLASSIC (L48)

#### OE

1202591  
136934  
1638117380  
2506934  
31200PLZD00  
6202000

Clamp: Pin "30" M8 B+  
Clamp: Pin "50" M4  
Flange [mm]: 78  
Number of mounting bores: 2  
Number of Teeth: 13  
Number of Thread Bores: 1  
Rated Power [kW]: 1,4  
Rotation Direction: Clockwise rotation  
Voltage [V]: 12

### MT-129JM

#### Starter



FORD C-MAX (DM2)  
FORD FOCUS C-MAX  
FORD FOCUS II (DA\_)  
FORD FOCUS II Cabriolet  
FORD FOCUS II Station wagon (DA\_)  
FORD FOCUS II Tre volumi (DA\_)

#### OE

1427763  
1476606  
1529431  
1904993  
4M5T11000FA  
6G9N11000GA

Clamp: M8 B+  
Flange [mm]: 63  
Number of mounting bores: 3  
Number of Teeth: 11  
Number of Thread Bores: 3  
Rated Power [kW]: 2,2  
Rotation Direction: Clockwise rotation  
Voltage [V]: 12

### MT-130JM

#### Starter



BMW 02 (E10)  
BMW 02 Cabriolet (E10)  
BMW 02 Touring (E6)  
BMW 1500-2000 (115, 116, 118, 121)  
BMW 1600 GT Coupe  
BMW 2000-3.2 Coupe (E9)

#### OE

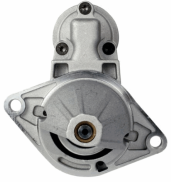
1005821194  
12411308543  
12411312104  
12411312130  
1312104  
1312130

Clamp: M8, Pin "50" M6  
Flange [mm]: 76  
Number of mounting bores: 2  
Number of Teeth: 9  
Number of Thread Bores: 0  
Rated Power [kW]: 1,7  
Rotation Direction: Clockwise rotation  
Voltage [V]: 12

## Electrics

### MT-131JM

#### Starter



DAEWOO LACETTI 2 volumi /Coda spiovente (KLAN)  
FIAT STILO (192)  
FIAT STILO Multi Wagon (192)  
OPEL AGILA (A) (H00)  
OPEL COMBO Tour

**OE**  
091151190  
09151190  
12596233  
24436877  
25187957  
3110084AE

Clamp: M8, Pin "50" M6  
Flange [mm]: 68  
Number of mounting bores: 2  
Number of Teeth: 9  
Number of Thread Bores: 0  
Rated Power [kW]: 1,1  
Rotation Direction: Clockwise rotation  
Voltage [V]: 12

### MT-132JM

#### Starter



HYUNDAI GALLOPER I  
HYUNDAI GALLOPER II (JK-01)  
HYUNDAI TERRACAN (HP)  
MITSUBISHI GALANT II Station Wagon (A16\_V)  
MITSUBISHI GALANT IV (A16\_)  
MITSUBISHI GALANT V (E5\_A, E7\_A, E8\_A)

**OE**  
1516954R  
3610042010  
3610042011  
3610042050  
3610047600  
3610047650

Clamp: M8 B+  
Flange [mm]: 77  
Number of mounting bores: 2  
Number of Teeth: 13  
Number of Thread Bores: 2  
Rated Power [kW]: 2,2  
Rotation Direction: Clockwise rotation  
Voltage [V]: 12

### MT-133JM

#### Starter



CARBODIES TX1  
FORD MAVERICK (UDS, UNS)  
NISSAN NAVARA (D21)  
NISSAN NAVARA (D22)  
NISSAN PATHFINDER (R50)  
NISSAN PICK UP (D21)

**OE**  
1516934  
1516934R  
1953357  
1958173  
1962439  
2330002N00

Clamp: M8  
Flange [mm]: 95  
Number of mounting bores: 2  
Number of Teeth: 9  
Number of Thread Bores: 0  
Rated Power [kW]: 2,5  
Rotation Direction: Clockwise rotation  
Voltage [V]: 12

### MT-134JM

#### Starter



FIAT DOBLO (119)  
LANCIA YPSILON (843)  
OPEL AGILA (A) (H00)  
OPEL AGILA (B) (H08)  
OPEL ASTRA CLASSIC (L48)  
OPEL ASTRA H (L48)

**OE**  
1202224  
1202399  
1638136480  
3110084ECO  
3110084EC0000  
3110085E00

Clamp: Pin "30" M8 B+  
Clamp: Pin "50" M6  
Flange [mm]: 64  
Number of mounting bores: 2  
Number of Teeth: 8  
Number of Teeth: 9  
Number of Thread Bores: 1  
Rated Power [kW]: 1,1  
Rotation Direction: Clockwise rotation  
Voltage [V]: 12

### MT-135JM

#### Starter



TOYOTA YARIS (SCP1\_, NLP1\_, NCP1\_)

**OE**  
2280009540  
281000J010  
281000J020  
281000J02084  
281000J020R  
281000J030

Clamp: Pin "50" Plug  
Flange [mm]: 74  
Number of mounting bores: 2  
Number of Teeth: 8  
Number of Thread Bores: 1  
Rated Power [kW]: 1,2  
Rotation Direction: Clockwise rotation  
Voltage [V]: 12

## Electrics

### MT-136JM

#### Starter



IVECO DAILY I Autobus  
IVECO DAILY I Cassone / Furgonato / Promiscuo  
IVECO DAILY I Pianale piatto/Telaio  
IVECO DAILY I Ribaltabile  
IVECO DAILY II Cassone / Furgonato / Promiscuo

**OE**  
004719664  
106055  
1516663R  
1516714R  
1516792R  
2995140

Clamp: M8  
Flange [mm]: 110  
Number of mounting bores: 3  
Number of Teeth: 9  
Number of Thread Bores: 1  
Rated Power [kW]: 2,2  
Rotation Direction: Clockwise rotation  
Voltage [V]: 12

### MT-137JM

#### Starter



AUTOBIANCHI Y10  
FIAT PANDA (141A\_)  
FIAT TIPO (160)  
FIAT UNO (146A/E)  
LANCIA Y10 (156)

**OE**  
0013940  
46231510  
4623510  
46402984  
5999906  
71ZBAB

Clamp: M8  
Flange [mm]: 64  
Number of mounting bores: 3  
Number of Teeth: 9  
Number of Thread Bores: 1  
Rated Power [kW]: 0,8  
Rotation Direction: Clockwise rotation  
Voltage [V]: 12

### MT-138JM

#### Starter



CHEVROLET AVEO 2 volumi /Coda spiovente (T200)  
CHEVROLET AVEO 2 volumi /Coda spiovente (T250, T255)  
CHEVROLET AVEO Tre volumi (T200)  
CHEVROLET AVEO Tre volumi (T250, T255)

**OE**  
09000700  
09000756  
09115191  
09117031  
09130838  
09133598

Clamp: M8, Pin "50" M6  
Flange [mm]: 68  
Number of mounting bores: 2  
Number of Teeth: 10  
Number of Thread Bores: 0  
Rated Power [kW]: 1,3  
Rotation Direction: Clockwise rotation  
Voltage [V]: 12

### MT-139JM

#### Starter



DACIA LOGAN (LS\_)  
DACIA LOGAN II  
DACIA LOGAN MCV II  
DACIA SANDERO  
DACIA SANDERO II  
RENAULT CLIO Grandtour (KR0/1\_)

**OE**  
2330000QAM  
2330000QAY  
233008504R  
5802X6  
7700864608  
7700864608A

Clamp: M8  
Flange [mm]: 63,5  
Number of mounting bores: 3  
Number of Teeth: 9  
Number of Thread Bores: 1  
Rated Power [kW]: 0,9  
Rotation Direction: Clockwise rotation  
Voltage [V]: 12

### MT-140JM

#### Starter



TOYOTA AURIS (NRE15\_, ZZE15\_, ADE15\_, ZRE15\_, NDE15\_)  
TOYOTA YARIS (SCP9\_, NSP9\_, KSP9\_, NCP9\_, ZSP9\_)

**OE**  
281000N010

Clamp: Pin "50" Plug  
Flange [mm]: 74  
Number of mounting bores: 2  
Number of Teeth: 9  
Number of Thread Bores: 1  
Rated Power [kW]: 1,1  
Rotation Direction: Clockwise rotation  
Voltage [V]: 12

## Electrics

### MT-141JM

#### Starter



LEXUS IS II (GSE2\_, ALE2\_, USE2\_)  
 TOYOTA AURIS (NRE15\_, ZZE15\_, ADE15\_, ZRE15\_, NDE15\_)  
 TOYOTA AURIS (NZE18\_, ZRE18\_)  
 TOYOTA AURIS TOURING SPORTS (ADE18\_, ZWE18\_, ZRE18\_)

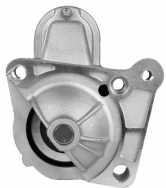
#### OE

281000G040  
 281000R010  
 281000R01084  
 281000R021  
 281000R030  
 281000R03084

Clamp: Pin "30" M8 B+  
 Clamp: Pin "50" Plug  
 Flange [mm]: 74  
 Number of mounting bores: 2  
 Number of Teeth: 9  
 Number of Thread Bores: 2  
 Rated Power [kW]: 2  
 Rotation Direction: Clockwise rotation  
 Voltage [V]: 12

### MT-142JM

#### Starter



MITSUBISHI CARISMA (DA\_)  
 MITSUBISHI CARISMA Tre volumi (DA\_)  
 MITSUBISHI SPACE STAR (DG\_A)  
 NISSAN PRIMERA (P12)  
 NISSAN PRIMERA Hatchback (P12)  
 NISSAN PRIMERA Station wagon (WP12)

#### OE

1810A048  
 2330000Q0E  
 2330000QAC  
 2330000QAE  
 23300AW300  
 23300AW302

Clamp: Pin "30" M8 B+  
 Clamp: Pin "50" M5  
 Number of mounting bores: 4  
 Number of Teeth: 11  
 Number of Thread Bores: 3  
 Rated Power [kW]: 2,1  
 Rotation Direction: Clockwise rotation  
 Voltage [V]: 12

### MT-143JM

#### Starter



MERCEDES-BENZ CLASSE A (W168)  
 MERCEDES-BENZ Vaneo (414)

#### OE

0051511601  
 005151160180  
 00515160180  
 0051517401  
 005151740180  
 51517401

Clamp: M8, Pin "50" M6  
 Flange [mm]: 70  
 Number of mounting bores: 2  
 Number of Teeth: 10  
 Number of Thread Bores: 0  
 Rated Power [kW]: 1,7  
 Rotation Direction: Clockwise rotation  
 Voltage [V]: 12

### MT-144JM

#### Starter



OPEL ASTRA GTC J  
 OPEL ASTRA J  
 OPEL ASTRA J Sports Tourer  
 OPEL ASTRA J Tre volumi  
 OPEL CORSA D  
 OPEL MERIVA B

#### OE

1202110  
 1202281  
 1202421  
 55566800  
 55568572  
 71739864

Clamp: Pin "50" M6  
 Flange [mm]: 68  
 Number of mounting bores: 2  
 Number of Teeth: 9  
 Number of Thread Bores: 0  
 Rated Power [kW]: 1,1  
 Rotation Direction: Clockwise rotation  
 Voltage [V]: 12

### MT-145JM

#### Starter



CITROEN BERLINGO (B9)  
 CITROEN BERLINGO (K9)  
 CITROEN BERLINGO (MF)  
 CITROEN C-ELYSEE  
 CITROEN C2 (JM\_)  
 CITROEN C3 AIRCROSS II

#### OE

12417794971  
 12417805098  
 1638116880  
 3110069K00  
 3640318  
 5802AE

Clamp: Pin "50" M5  
 Number of mounting bores: 4  
 Number of Teeth: 11  
 Number of Thread Bores: 2  
 Rated Power [kW]: 2,2  
 Rotation Direction: Clockwise rotation  
 Voltage [V]: 12

## Electrics

### MT-146JM

#### Starter



AUDI A2 (8Z0)  
AUDI A3 (8L1)  
FORD GALAXY (WGR)  
SEAT ALHAMBRA (7V8, 7V9)  
SEAT AROSA (6H)  
SEAT CORDOBA (6K1, 6K2)

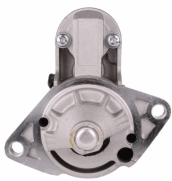
#### OE

02A911023G  
02A911023GX  
02A911023J  
02A911023JX  
02A911023R  
02A911023RX

Clamp: M8  
Flange [mm]: 76  
Number of mounting bores: 2  
Number of Teeth: 10  
Number of Thread Bores: 0  
Rated Power [kW]: 1,8  
Rotation Direction: Anti-clockwise rotation  
Voltage [V]: 12

### MT-147JM

#### Starter



SUZUKI JIMNY (FJ)  
SUZUKI JIMNY Fuoristrada aperto (SN)  
SUZUKI SAMURAI (SJ)  
SUZUKI SAMURAI Fuoristrada aperto (SJ)  
SUZUKI SJ 413  
SUZUKI VITARA (ET, TA)

#### OE

1A5118400  
3100083021  
3110060A10  
3110060A10000  
3110060A11  
3110060A12

Clamp: M8  
Flange [mm]: 66  
Number of mounting bores: 2  
Number of Teeth: 8  
Number of Teeth: 9  
Number of Thread Bores: 0  
Rated Power [kW]: 0,9  
Rotation Direction: Clockwise rotation  
Voltage [V]: 12

### MT-148JM

#### Starter



AUDI 80 (89, 89Q, 8A, B3)  
AUDI 80 (8C, B4)  
AUDI 80 Avant (8C, B4)  
AUDI 90 (89, 89Q, 8A, B3)  
AUDI A4 (8D2, B5)  
AUDI A4 (8E2, B6)

#### OE

068911023P  
068911023PX  
068911023R  
068911023RX  
068911023S  
068911023SX

Clamp: M8  
Clamp: Pin "50" 6.3mm Spade  
Flange [mm]: 82,5  
Number of mounting bores: 2  
Number of Teeth: 10  
Number of Teeth: 9  
Number of Thread Bores: 2  
Rated Power [kW]: 1,7  
Rotation Direction: Clockwise rotation  
Voltage [V]: 12

### MT-149JM

#### Starter



MERCEDES-BENZ CLASSE A (W168)  
MERCEDES-BENZ CLASSE A (W169)  
MERCEDES-BENZ CLASSE B (W245)  
MERCEDES-BENZ Vaneo (414)

#### OE

0041518501  
004151850180  
0051212101  
0051511101  
00515111010080  
005151110180

Clamp: Pin "50" M6  
Flange [mm]: 70  
Number of mounting bores: 2  
Number of Teeth: 10  
Number of Teeth: 9  
Number of Thread Bores: 0  
Rated Power [kW]: 1,3  
Rotation Direction: Clockwise rotation  
Voltage [V]: 12

### MT-150JM

#### Starter



FORD MONDEO III (B5Y)  
FORD MONDEO III Station wagon (BWY)  
FORD MONDEO III Tre volumi (B4Y)  
JAGUAR X-TYPE (CF1)  
JAGUAR X-TYPE Estate  
LTI TX

#### OE

0255CB  
1096338  
1120215  
1140110  
1151641  
1202166

Clamp: M8, Pin "50" M6  
Number of mounting bores: 4  
Number of Teeth: 19  
Number of Thread Bores: 0  
Rated Power [kW]: 2,1  
Rotation Direction: Clockwise rotation  
Voltage [V]: 12

## Electrics

### MT-151JM

#### Starter



ALFA ROMEO MITO (955)  
CHRYSLER YPSILON  
CITROEN NEMO Station wagon  
FIAT 500 (312)  
FIAT 500 C (312)  
FIAT 500L

#### OE

1202203  
1202266  
1202508  
1612794380  
1616323380  
1723350

Clamp: M8 B+  
Flange [mm]: 64  
Number of mounting bores: 2  
Number of Teeth: 10  
Number of Thread Bores: 1  
Rated Power [kW]: 1,4  
Rotation Direction: Clockwise rotation  
Voltage [V]: 12

### MT-152JM

#### Starter



DACIA SOLENZA  
DACIA SUPERNOVA  
MAZDA 2 (DE)  
RENAULT 11 (B/C37\_)  
RENAULT 19 I (B/C53\_)  
RENAULT 19 I Cabriolet (D53\_)

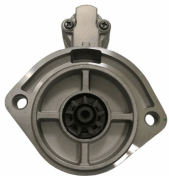
#### OE

0000431120  
0000434120  
1059564  
1516729R  
1516807R  
17089200

Clamp: M8  
Flange [mm]: 66  
Number of mounting bores: 4  
Number of Teeth: 11  
Number of Teeth: 9  
Number of Thread Bores: 4  
Rated Power [kW]: 1,4  
Rotation Direction: Clockwise rotation  
Voltage [V]: 12

### MT-153JM

#### Starter



NISSAN CABSTAR Pick-up  
NISSAN TRADE Autobus  
NISSAN TRADE Furgonato  
NISSAN TRADE Pianale piatto/Telaio

#### OE

136914  
233000T600  
2330015900  
233001S900  
2330054T00  
2330090067

Clamp: M8  
Flange [mm]: 95  
Number of mounting bores: 2  
Number of Teeth: 9  
Number of Thread Bores: 0  
Rated Power [kW]: 2,2  
Rotation Direction: Clockwise rotation  
Voltage [V]: 12

### MT-154JM

#### Starter



NISSAN MICRA C+C (K12)  
NISSAN MICRA II (K11)  
NISSAN MICRA III (K12)  
NISSAN NOTE (E11)

#### OE

233001F710  
233001F715  
233001F770  
233001F771  
233001F772  
233001F772B

Clamp: M8, Pin "50" M6  
Flange [mm]: 70  
Number of mounting bores: 2  
Number of Teeth: 8  
Number of Thread Bores: 1  
Rated Power [kW]: 1,1  
Rotation Direction: Clockwise rotation  
Voltage [V]: 12

### MT-155JM

#### Starter



DACIA DOKKER  
DACIA DUSTER  
DACIA LODGY  
RENAULT CAPTUR  
RENAULT CLIO Grandtour IV  
RENAULT CLIO IV

#### OE

2330000Q3D  
233000557R  
233000779R  
233001071  
233001071R  
233003307R

Clamp: Pin "30" M8 B+  
Clamp: Pin "50" M5  
Number of mounting bores: 4  
Number of Teeth: 11  
Number of Thread Bores: 3  
Rated Power [kW]: 1  
Rotation Direction: Clockwise rotation  
Voltage [V]: 12

## Electrics

### MT-156JM

#### Starter



SMART CABRIO (450)  
 SMART CITY-COUPE (450)  
 SMART CROSSBLADE (450)  
 SMART FORTWO Cabrio (450)  
 SMART FORTWO Coupé (450)  
 SMART ROADSTER (452)

**OE**  
 0003188V004  
 0003188V005  
 0003188V006  
 0003188V007  
 0003188V008  
 0003188V008000000

Clamp: M8  
 Flange [mm]: 70  
 Number of mounting bores: 3  
 Number of Teeth: 9  
 Number of Thread Bores: 2  
 Rated Power [kW]: 0,8  
 Rotation Direction: Clockwise rotation  
 Voltage [V]: 12

### MT-157JM

#### Starter



MERCEDES-BENZ CLASSE C (W204)  
 MERCEDES-BENZ CLASSE C Coupé (C204)  
 MERCEDES-BENZ CLASSE C T-Model (S204)  
 MERCEDES-BENZ CLASSE E (W212)  
 MERCEDES-BENZ CLASSE E Cabriolet (A207)  
 MERCEDES-BENZ CLASSE E Coupé (C207)

**OE**  
 0009060126  
 000906012680  
 0061514501  
 006151450180  
 61514501  
 6519060025

Clamp: M8 B+  
 Clamp: Pin "50" M6  
 Flange [mm]: 70  
 Number of mounting bores: 2  
 Number of Teeth: 12  
 Number of Thread Bores: 2  
 Rated Power [kW]: 1,7  
 Rotation Direction: Clockwise rotation  
 Voltage [V]: 12

### MT-158JM

#### Starter



FIAT FIORINO Pick up (146)  
 FIAT PALIO (178BX)  
 FIAT PALIO Weekend (178DX)  
 FIAT PUNTO (176)  
 FIAT SIENA (178\_)  
 FIAT STRADA Pick-up (178E)

**OE**  
 46430721  
 46439669  
 4643970  
 46439700  
 46440079  
 46446291

Clamp: Pin "50" M6  
 Flange [mm]: 82  
 Number of mounting bores: 3  
 Number of Teeth: 9  
 Number of Thread Bores: 3  
 Rated Power [kW]: 1,7  
 Rotation Direction: Clockwise rotation  
 Voltage [V]: 12

### MT-159JM

#### Starter



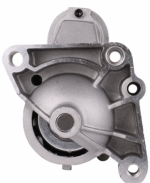
DACIA DOKKER  
 DACIA DUSTER  
 DACIA LODGY  
 DACIA LOGAN II  
 DACIA LOGAN MCV II  
 DACIA SANDERO II

**OE**  
 231004GD3A  
 231004GD3ACX  
 231004GD3AEM  
 2330000Q2H  
 2330000Q3B  
 233000379R

Clamp: M8 B+  
 Clamp: Pin "50" Plug  
 Flange [mm]: 64  
 Number of mounting bores: 2  
 Number of Teeth: 12  
 Number of Teeth: 13  
 Number of Thread Bores: 2  
 Rated Power [kW]: 1,7  
 Rotation Direction: Clockwise rotation  
 Voltage [V]: 12

### MT-160JM

#### Starter



RENAULT AVANTIME (DE0\_)  
 RENAULT ESPACE III (JE0\_)  
 RENAULT ESPACE IV (JK0/1\_)  
 RENAULT LAGUNA II (BG0/1\_)  
 RENAULT LAGUNA II Grandtour (KG0/1\_)  
 RENAULT VEL SATIS (BJ0\_)

**OE**  
 1202206  
 1202208  
 2330000Q0B  
 2330000Q0C  
 2330000QAF  
 2330000QAG

Clamp: M8  
 Number of mounting bores: 4  
 Number of Teeth: 10  
 Number of Thread Bores: 3  
 Rated Power [kW]: 2  
 Rotation Direction: Clockwise rotation  
 Voltage [V]: 12

## Electrics

### MT-161JM

#### Starter



PIAGGIO APE (MP) VESPACAR  
PIAGGIO APE TM Furgonato  
PIAGGIO APE TM Pianale piatto/Telaio

#### OE

157715  
803499  
8034993  
834692

Number of mounting bores: 2  
Number of Thread Bores: 0  
Rated Power [kW]: 0,8  
Voltage [V]: 12

### MT-162JM

#### Starter



FORD C-MAX II  
FORD FOCUS II (DA\_)  
FORD FOCUS II Station wagon (DA\_)  
FORD FOCUS II Tre volumi (DA\_)  
FORD FOCUS III  
FORD FOCUS III Tre volumi

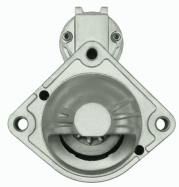
#### OE

1687623  
1715211  
1778016  
1893556  
1898356  
2033247

Clamp: Pin "30" M8 B+  
Clamp: Pin "50" M6  
Number of mounting bores: 3  
Number of Teeth: 11  
Number of Thread Bores: 0  
Rated Power [kW]: 2,3  
Rotation Direction: Clockwise rotation  
Voltage [V]: 12

### MT-163JM

#### Starter



BMW 1 (E87)  
BMW 3 (E46)  
BMW 3 Cabriolet (E46)  
BMW 3 Compact (E46)  
BMW 3 Coupe (E46)  
BMW 3 Touring (E46)

#### OE

12417787354  
12417787356  
4110907CD  
7787354  
7787356

Clamp: 30H M5  
Clamp: Pin 50 M6  
Flange [mm]: 74  
Number of mounting bores: 2  
Number of Teeth: 10  
Number of Thread Bores: 2  
Rated Power [kW]: 1,6  
Rotation Direction: Clockwise rotation  
Voltage [V]: 12

### MT-164JM

#### Starter



CHEVROLET MATIZ (M200, M250)  
CHEVROLET SPARK  
DAEWOO MATIZ  
DAEWOO MATIZ (KLYA)  
DAEWOO TICO (KLY3)  
SUZUKI WAGON R+ (EM)

#### OE

25186107  
3110070B20  
3110075F0  
3110075F00  
3110075F01  
3110075F01000

Clamp: M8  
Flange [mm]: 75  
Number of mounting bores: 2  
Number of Teeth: 8  
Number of Thread Bores: 2  
Rated Power [kW]: 1  
Rotation Direction: Clockwise rotation  
Voltage [V]: 12

### MT-165JM

#### Starter



SUBARU TREZIA  
TOYOTA AURIS (NRE15\_, ZZE15\_, ADE15\_,  
ZRE15\_, NDE15\_)  
TOYOTA AURIS (NZE18\_, ZRE18\_)  
TOYOTA AURIS TOURING SPORTS (ADE18\_,  
ZWE18\_, ZRE18\_)

#### OE

281000N040  
281000N04084  
281000N060  
2810033090  
2810033110

Clamp: Pin "50" Plug  
Flange [mm]: 74  
Number of mounting bores: 2  
Number of Teeth: 9  
Number of Thread Bores: 1  
Rated Power [kW]: 1,6  
Rotation Direction: Clockwise rotation  
Voltage [V]: 12

## Electrics

### MT-166JM

#### Starter



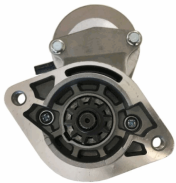
AUDI A6 (4B2, C5)  
DAEWOO MATIZ (KLYA)  
JAGUAR XJ (X350, X358)  
NEW HOLLAND TN-A  
TOYOTA LAND CRUISER (KDJ12\_, GRJ12\_)

**OE**  
0005801441816  
580 144 18 16  
5801441816

Clamp: M8 B+  
Flange [mm]: 110  
Number of mounting bores: 3  
Number of Teeth: 9  
Number of Thread Bores: 0  
Rated Power [kW]: 2,6  
Rotation Direction: Clockwise rotation  
Voltage [V]: 12

### MT-167JM

#### Starter



TOYOTA AVENSIS VERSO (\_CLM2\_, \_ACM2\_)  
TOYOTA CARINA E (\_T19\_)  
TOYOTA CARINA E Sportswagon (\_T19\_)  
TOYOTA CARINA E Tre volumi (\_T19\_)  
TOYOTA COROLLA (\_E11\_)  
TOYOTA COROLLA Compact (\_E11\_)

**OE**  
2810064140  
2810064310  
2810064430  
281006443084  
9622809364  
TT15639

Clamp: M8  
Flange [mm]: 74  
Number of mounting bores: 2  
Number of Teeth: 10  
Number of Thread Bores: 2  
Rated Power [kW]: 2,2  
Rotation Direction: Clockwise rotation  
Voltage [V]: 12

### MT-168JM

#### Starter



FIAT BRAVA (182)  
FIAT BRAVO I (182)  
FIAT DOBLO (119)  
FIAT MAREA (185)  
FIAT MAREA Weekend (185)  
FIAT MULTIPLA (186)

**OE**  
361002B402  
46231536  
46451529  
46524472  
46531437  
46748349

Clamp: M8, Pin "50" M6  
Flange [mm]: 63,5  
Number of mounting bores: 3  
Number of Teeth: 9  
Number of Thread Bores: 3  
Rated Power [kW]: 1,3  
Rotation Direction: Clockwise rotation  
Voltage [V]: 12

### MT-169JM

#### Starter



BMW 1 (E81)  
BMW 1 (E87)  
BMW 1 (F20)  
BMW 1 (F21)  
BMW 1 Cabriolet (E88)  
BMW 1 Coupé (E82)

**OE**  
12417798006  
12417801203  
12417802508  
12417804138  
12417804140  
12417811601

Clamp: Pin "30" M8 B+  
Clamp: Pin "50" M6  
Flange [mm]: 69  
Number of mounting bores: 3  
Number of Teeth: 11  
Number of Thread Bores: 0  
Rated Power [kW]: 2,2  
Rotation Direction: Clockwise rotation  
Voltage [V]: 12

### MT-170JM

#### Starter



AUDI A3 (8P1)  
AUDI A3 Cabriolet (8P7)  
AUDI A3 Sportback (8PA)  
AUDI TT (8J3)  
AUDI TT (8N3)  
AUDI TT Roadster (8J9)

**OE**  
02E911023H  
02E911023HX  
02E911023L  
02E911023LX  
2E911023H  
2E911023HX

Clamp: Pin "50" Plug  
Flange [mm]: 76  
Number of mounting bores: 2  
Number of Teeth: 11  
Number of Thread Bores: 0  
Rated Power [kW]: 2  
Rotation Direction: Anti-clockwise rotation  
Voltage [V]: 12

## Electrics

### MT-171JM

#### Starter



DACIA LOGAN (LS\_)  
 DACIA LOGAN Pick-up (US\_)  
 DACIA SANDERO  
 NISSAN ALMERA II (N16)  
 NISSAN ALMERA II Hatchback (N16)  
 NISSAN MICRA III (K12)

#### OE

2330000Q0G  
 2330000Q0H  
 2330000QAB  
 2330000QAW  
 2330000QAZ  
 2330000QUA

Clamp: M8  
 Flange [mm]: 65  
 Number of mounting bores: 3  
 Number of Teeth: 12  
 Number of Thread Bores: 2  
 Rated Power [kW]: 1,4  
 Rotation Direction: Clockwise rotation  
 Voltage [V]: 12

### MT-172JM

#### Starter



BMW 1 Cabriolet (E88)  
 HYUNDAI ACCENT III (MC)  
 HYUNDAI ACCENT III Tre volumi (MC)  
 HYUNDAI ACCENT IV Tre volumi (RB)  
 HYUNDAI ELANTRA Tre volumi (MD, UD)  
 HYUNDAI GETZ (TB)

#### OE

361002A000  
 361002A100  
 361002A300  
 TT16345  
 TT16345PRO

Clamp: M8 B+  
 Clamp: Pin "50" Plug  
 Flange [mm]: 77  
 Number of mounting bores: 2  
 Number of Teeth: 8  
 Number of Thread Bores: 2  
 Rated Power [kW]: 1,7  
 Rotation Direction: Clockwise rotation  
 Voltage [V]: 12

### MT-173JM

#### Starter



BMW 1 (E81)  
 BMW 1 (E87)  
 BMW 3 (E46)  
 BMW 3 (E90)  
 BMW 3 Cabriolet (E46)  
 BMW 3 Cabriolet (E93)

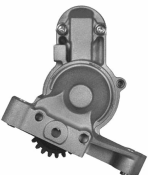
#### OE

12417794952  
 12417796892  
 12417798035  
 12417798036  
 7794952  
 7796892

Clamp: Pin "30" M8 B+  
 Clamp: Pin "50" M6  
 Flange [mm]: 74  
 Number of mounting bores: 2  
 Number of Teeth: 9  
 Number of Thread Bores: 2  
 Rated Power [kW]: 1,8  
 Rotation Direction: Clockwise rotation  
 Voltage [V]: 12

### MT-174JM

#### Starter



CHRYSLER SEBRING (JS)  
 CHRYSLER SEBRING Cabriolet (JS)  
 DODGE AVENGER  
 DODGE CALIBER  
 DODGE JOURNEY  
 JEEP COMPASS (MK49)

#### OE

050033440AC  
 05033440AA  
 05033440AC  
 1810A062  
 1810A143  
 5033440AA

Clamp: M8 B+  
 Number of mounting bores: 3  
 Number of Teeth: 22  
 Number of Thread Bores: 0  
 Rated Power [kW]: 2  
 Rotation Direction: Anti-clockwise rotation  
 Voltage [V]: 12

### MT-175JM

#### Starter



METROCAB Taxi  
 TOYOTA CROWN Tre volumi (\_S1\_)  
 TOYOTA HILUX Fuoristrada chiuso (ZN13\_, LN9\_, RN1\_, YN8\_,  
 TOYOTA HILUX II Pick-up (RN6\_, RN5\_, LN6\_, YN6\_, YN5\_, LN

#### OE

1516979R  
 2810005030  
 2810014070  
 2810054070  
 2810054080  
 2810054100

Clamp: M8  
 Flange [mm]: 82,5  
 Number of mounting bores: 2  
 Number of Teeth: 10  
 Number of Teeth: 11  
 Number of Thread Bores: 1  
 Rated Power [kW]: 2  
 Rotation Direction: Clockwise rotation  
 Voltage [V]: 12

## Electrics

### MT-176JM

#### Starter



CHEVROLET AVEO 2 volumi /Coda spiovente (T200)  
 CHEVROLET AVEO 2 volumi /Coda spiovente (T250, T255)  
 CHEVROLET AVEO 2 volumi /Coda spiovente (T300)

#### OE

25187951  
 63522629  
 96289430  
 96469962  
 96497702  
 96943429

Clamp: M8  
 Flange [mm]: 75  
 Number of mounting bores: 2  
 Number of Teeth: 8  
 Number of Thread Bores: 1  
 Position / Degree: 30  
 Rated Power [kW]: 0,8  
 Rotation Direction: Clockwise rotation  
 Voltage [V]: 12

### MT-177JM

#### Starter



DACIA DOKKER  
 DACIA DUSTER  
 DACIA LODGY  
 DACIA LOGAN (LS\_)  
 DACIA LOGAN II  
 DACIA LOGAN MCV (KS\_)

#### OE

2330000QAA  
 2330000QAX  
 233001105R  
 233004003R  
 233007189R  
 233009363R

Clamp: M8  
 Flange [mm]: 65  
 Number of mounting bores: 3  
 Number of Teeth: 8  
 Number of Teeth: 9  
 Number of Thread Bores: 3  
 Rated Power [kW]: 1  
 Rotation Direction: Clockwise rotation  
 Voltage [V]: 12

### MT-178JM

#### Starter



AUDI A1 (8X1, 8XF)  
 AUDI A1 Sportback (8XA, 8XK)  
 AUDI A3 (8P1)  
 AUDI A3 Sportback (8PA)  
 SEAT ALTEA (5P1)  
 SEAT ALTEA XL (5P5, 5P8)

#### OE

027911023S  
 02T911023R  
 02T911023RX  
 02T911023S  
 02T911023SX  
 02T911024A

Clamp: M8 B+  
 Clamp: Pin "50" Plug  
 Flange [mm]: 76  
 Number of mounting bores: 2  
 Number of Teeth: 10  
 Number of Teeth: 9  
 Number of Thread Bores: 0  
 Rated Power [kW]: 1  
 Rotation Direction: Anti-clockwise rotation  
 Voltage [V]: 12

### MT-179JM

#### Starter



FIAT SEDICI  
 SUBARU JUSTY III (G3X)  
 SUZUKI GRAND VITARA II (JT)  
 SUZUKI IGNIS (FH)  
 SUZUKI IGNIS II  
 SUZUKI JIMNY (FJ)

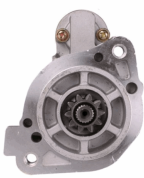
#### OE

3110063J00  
 3110063J10  
 3110075F60  
 3110080G0  
 3110080G00  
 3110080G1

Clamp: Pin "30" M8 B+  
 Clamp: Pin "50" 6.4mm Plug  
 Flange [mm]: 70  
 Number of mounting bores: 2  
 Number of Teeth: 8  
 Number of Thread Bores: 2  
 Rated Power [kW]: 1  
 Rotation Direction: Clockwise rotation  
 Voltage [V]: 12

### MT-180JM

#### Starter



MITSUBISHI PAJERO II (V3\_W)  
 MITSUBISHI PAJERO II (V3\_W, V2\_W, V4\_W)  
 MITSUBISHI PAJERO III (V7\_W, V6\_W)  
 MITSUBISHI PAJERO III Fuoristrada aperto (V6\_W, V7\_W)  
 MITSUBISHI PAJERO IV (V8\_W, V9\_W)

#### OE

009154720280  
 1516512R  
 1810A050  
 1810A050R  
 A009154720280  
 M002T63271

Clamp: M8  
 Flange [mm]: 77  
 Number of mounting bores: 2  
 Number of Teeth: 10  
 Number of Thread Bores: 2  
 Rated Power [kW]: 2,2  
 Rotation Direction: Clockwise rotation  
 Voltage [V]: 12

## Electrics

### MT-181JM

#### Starter



DAIHATSU HIJET Furgonato (S85)  
DAIHATSU HIJET Pick-up  
PIAGGIO PORTER Autobus  
PIAGGIO PORTER Furgonato  
PIAGGIO PORTER Pianale piatto/Telaio

**OE**  
2280005711  
2810087548  
2810087551  
2810087551000

Clamp: M8  
Flange [mm]: 74  
Number of mounting bores: 2  
Number of Teeth: 8  
Number of Thread Bores: 0  
Rated Power [kW]: 0,8  
Rotation Direction: Clockwise rotation  
Voltage [V]: 12

### MT-182JM

#### Starter



RENAULT KANGOO (KC0/1\_)  
RENAULT MEGANE I (BA0/1\_)  
RENAULT MEGANE I Classic (LA0/1\_)  
RENAULT MEGANE I Coach (DA0/1\_)  
RENAULT MEGANE I Grandtour (KA0/1\_)  
RENAULT MEGANE Scenic (JA0/1\_)

**OE**  
6001545511  
7700113267  
7700113627  
7700116282  
7711134297  
7711134790

Clamp: M8  
Flange [mm]: 65  
Number of mounting bores: 3  
Number of Teeth: 12  
Number of Thread Bores: 3  
Rated Power [kW]: 1,7  
Rotation Direction: Clockwise rotation  
Voltage [V]: 12

### MT-183JM

#### Starter



FORD TRANSIT Autobus (E\_ \_)  
FORD TRANSIT Autobus (V\_ \_)  
FORD TRANSIT Furgonato (E\_ \_)  
FORD TRANSIT Furgonato (T\_ \_)  
FORD TRANSIT Furgonato (V\_ \_)  
FORD TRANSIT Pianale piatto/Telaio (E\_ \_)

**OE**  
1008823  
1024508  
1027928  
1059179  
1073108  
1093471

Clamp: M8, Pin "50" M6  
Flange [mm]: 92  
Number of mounting bores: 3  
Number of Teeth: 13  
Number of Thread Bores: 0  
Rated Power [kW]: 2,3  
Rotation Direction: Clockwise rotation  
Voltage [V]: 12

### MT-184JM

#### Starter



AUDI A3 (8P1)  
AUDI A3 Cabriolet (8P7)  
AUDI A3 Sportback (8PA)  
SEAT ALTEA (5P1)  
SEAT ALTEA XL (5P5, 5P8)  
SEAT IBIZA V (6J5, 6P5)

**OE**  
0AH911023  
0AH911023A  
0AH911023AX  
0AH911023D  
0AH911023DX  
0AH911023K

Clamp: M8  
Flange [mm]: 76  
Number of mounting bores: 3  
Number of Teeth: 10  
Number of Thread Bores: 0  
Rated Power [kW]: 1,1  
Rotation Direction: Anti-clockwise rotation  
Voltage [V]: 12

### MT-185JM

#### Starter



AUDI A4 (8EC, B7)  
AUDI A4 Avant (8ED, B7)  
AUDI A4 Cabriolet (8H7, B6, 8HE, B7)  
AUDI A6 (4F2, C6)  
AUDI A6 Avant (4F5, C6)  
SEAT EXEO (3R2)

**OE**  
03G911023  
03G911023X  
TT15338PRO

Clamp: M8 B+  
Flange [mm]: 82  
Number of mounting bores: 2  
Number of Teeth: 9  
Number of Thread Bores: 0  
Rated Power [kW]: 2  
Rotation Direction: Clockwise rotation  
Voltage [V]: 12

## Electrics

### MT-186JM

#### Starter



AUDI A1 (8X1, 8XF)  
AUDI A1 Sportback (8XA, 8XK)  
AUDI A3 (8P1)  
AUDI A3 Cabriolet (8P7)  
AUDI A3 Sportback (8PA)  
SEAT ALTEA (5P1)

#### OE

02N911023N  
02Z911023K  
02Z911023KX  
02Z911023M  
02Z911023MX  
02Z911023N

Clamp: M8 B+  
Flange [mm]: 76  
Number of mounting bores: 3  
Number of Teeth: 11  
Number of Teeth: 12  
Number of Thread Bores: 0  
Rated Power [kW]: 1,7  
Rotation Direction: Clockwise rotation  
Voltage [V]: 12

### MT-187JM

#### Starter



NISSAN NAVARA (D40)  
NISSAN PATHFINDER (R51)

#### OE

23100EB30A  
23300EB300  
23300EB30A  
23300EB30B  
23300EB30REX  
23300EB71B

Clamp: Pin "30" M8 B+  
Clamp: Pin "50" M5  
Flange [mm]: 70  
Number of mounting bores: 2  
Number of Teeth: 11  
Number of Teeth: 12  
Number of Thread Bores: 2  
Rated Power [kW]: 2  
Rotation Direction: Clockwise rotation  
Voltage [V]: 12

### MT-188JM

#### Starter



CITROEN AX (ZA-)  
CITROEN BERLINGO (B9)  
CITROEN BERLINGO (MF)  
CITROEN BX (XB-)  
CITROEN BX Break (XB-)  
CITROEN C-ELYSEE

#### OE

1516758R  
3960404  
534054A  
534054B  
534054C  
534054D

Clamp: M8  
Clamp: Pin "50" 6.4mm Plug  
Number of mounting bores: 3  
Number of Teeth: 10  
Number of Teeth: 9  
Number of Thread Bores: 1  
Rated Power [kW]: 0,9  
Rotation Direction: Clockwise rotation  
Voltage [V]: 12

### MT-189JM

#### Starter



SEAT IBIZA II (6K1)  
VW CALIFORNIA T4 Camper (7DJ, 7DK, 70J)  
VW TRANSPORTER IV Autobus (70XB, 70XC, 7DB, 7DW)  
VW TRANSPORTER IV Furgonato (70XA)  
VW TRANSPORTER IV Pianale piatto/Telaio

#### OE

028911023A  
028911023C  
028911023M  
02A911303B  
02B911023A  
02B911023AX

Clamp: M8  
Flange [mm]: 76  
Number of mounting bores: 3  
Number of Teeth: 10  
Number of Teeth: 11  
Rated Power [kW]: 2  
Rotation Direction: Anti-clockwise rotation  
Voltage [V]: 12

### MT-190JM

#### Starter



SEAT CORDOBA (6K2)  
SEAT IBIZA II (6K1)  
SEAT IBIZA III (6K1)  
SEAT LEON (1M1)  
VW BORA (1J2)  
VW GOLF III (1H1)

#### OE

0041518701  
020911012P  
020911023D  
020911023DX  
020911023P  
020911023PX

Clamp: M8  
Flange [mm]: 76  
Number of mounting bores: 3  
Number of Teeth: 9  
Rated Power [kW]: 2  
Rotation Direction: Anti-clockwise rotation  
Voltage [V]: 12

## Electrics

### MT-192JM

#### Starter



AUDI A3 (8L1)  
 FORD GALAXY (WGR)  
 FORD GALAXY MK I VAN (WGR)  
 SEAT ALHAMBRA (7V8, 7V9)  
 SEAT ALHAMBRA VAN (7V8, 7V9)  
 SEAT CORDOBA (6K1, 6K2)

#### OE

020911023  
 020911023F  
 020911023FV  
 020911023FX  
 020911024B  
 030911023F

Clamp: M8  
 Flange [mm]: 76  
 Number of mounting bores: 3  
 Number of Teeth: 10  
 Number of Teeth: 9  
 Rated Power [kW]: 1,1  
 Rotation Direction: Anti-clockwise rotation  
 Voltage [V]: 12

### MT-193JM

#### Starter



OPEL ASTRA G 2 volumi /Coda spiovente (F48\_, F08\_)  
 OPEL ASTRA G Cabriolet (F67)  
 OPEL ASTRA G Coupe (F07\_)  
 OPEL ASTRA G Furgonato (F70)  
 OPEL ASTRA G Station wagon (F35\_)

#### OE

09200962  
 1202148  
 24422273  
 24454431  
 5342340  
 5343371

Clamp: M8  
 Clamp: Pin "50" M6  
 Flange [mm]: 82,5  
 Number of mounting bores: 2  
 Number of Teeth: 10  
 Number of Thread Bores: 1  
 Rated Power [kW]: 2  
 Rotation Direction: Clockwise rotation  
 Voltage [V]: 12

### MT-194JM

#### Starter



BMW 3 (E36)  
 BMW 3 (E46)  
 BMW 3 Cabriolet (E36)  
 BMW 3 Cabriolet (E46)  
 BMW 3 Compact (E36)  
 BMW 3 Compact (E46)

#### OE

11531266463  
 12411266463  
 12411354823  
 12411466342  
 12411712937  
 12411712939

Clamp: M8 B+  
 Clamp: Pin "50" M6  
 Flange [mm]: 76  
 Number of mounting bores: 3  
 Number of Teeth: 9  
 Number of Thread Bores: 2  
 Rated Power [kW]: 1,4  
 Rotation Direction: Clockwise rotation  
 Voltage [V]: 12

### MT-195JM

#### Starter



ALFA ROMEO AR 6 Furgonato (280)  
 FIAT DUCATO Furgonato (280)  
 FIAT DUCATO Furgonato (290)  
 FIAT DUCATO Panorama (280)  
 FIAT DUCATO Panorama (290)  
 FIAT DUCATO Pianale piatto/Telaio (280)

#### OE

46231642  
 7580575  
 7666135  
 77671430

Clamp: M8  
 Flange [mm]: 110  
 Number of mounting bores: 3  
 Number of Teeth: 9  
 Rated Power [kW]: 2,2  
 Rotation Direction: Clockwise rotation  
 Voltage [V]: 12

### MT-196JM

#### Starter



ABARTH PUNTO EVO (199)  
 ABARTH PUNTO EVO (199\_)  
 ALFA ROMEO GIULIETTA (940)  
 ALFA ROMEO GIULIETTA Furgonato (940\_)  
 ALFA ROMEO MITO (955)  
 CHRYSLER DELTA

#### OE

051873926  
 1202285  
 1715776  
 1881471  
 51804744  
 51808744

Flange [mm]: 64  
 Number of mounting bores: 3  
 Number of Teeth: 9  
 Number of Thread Bores: 1  
 Rated Power [kW]: 1,1  
 Rotation Direction: Clockwise rotation  
 Voltage [V]: 12

## Electrics

### MT-197JM

#### Starter



FIAT DOBLO (119)  
 FIAT DOBLO Cargo (223)  
 FIAT PALIO Weekend (178DX)  
 FIAT PUNTO (188)  
 FIAT PUNTO Van (188AX)  
 FIAT STRADA Pick-up (178E)

#### OE

46437520  
 46522234  
 46830212  
 46835091  
 71723351  
 71723352

Clamp: M8  
 Clamp: Pin "50" M6  
 Flange [mm]: 82  
 Number of mounting bores: 3  
 Number of Teeth: 11  
 Number of Thread Bores: 1  
 Rated Power [kW]: 1,8  
 Rotation Direction: Clockwise rotation  
 Voltage [V]: 12

### MT-198JM

#### Starter



AUDI A1 (8X1, 8XF)  
 AUDI A1 Sportback (8XA, 8XK)  
 AUDI A3 (8P1)  
 AUDI A3 (8V1)  
 AUDI A3 Cabriolet (8P7)  
 AUDI A3 Cabriolet (8V7)

#### OE

02Z911021C  
 02Z911021CX  
 02Z911021K  
 02Z911021KX  
 02Z911023AX  
 02Z911023S

Clamp: Pin "50" Plug  
 Flange [mm]: 79  
 Number of mounting bores: 3  
 Number of Teeth: 13  
 Rated Power [kW]: 2,2  
 Rotation Direction: Anti-clockwise rotation  
 Voltage [V]: 12

### MT-199JM

#### Starter



ALFA ROMEO GIULIETTA (940)  
 ALFA ROMEO GIULIETTA Furgonato (940\_)  
 ALFA ROMEO MITO (955)  
 ALFA ROMEO TONALE (965\_)  
 FIAT 500L  
 FIAT 500X

#### OE

1202279  
 1202292  
 1202498  
 1202512  
 3110055PA0  
 3110062MA0

Clamp: M8 B+  
 Clamp: Pin "50" M6  
 Flange [mm]: 76  
 Number of mounting bores: 3  
 Number of Teeth: 11  
 Rated Power [kW]: 1,7  
 Rotation Direction: Clockwise rotation  
 Voltage [V]: 12

### MT-200JM

#### Starter



MERCEDES-BENZ 190 (W201)  
 MERCEDES-BENZ CLASSE C (W202)  
 MERCEDES-BENZ CLASSE E (W124)  
 MERCEDES-BENZ CLASSE E Coupe (C124)  
 MERCEDES-BENZ CLASSE E Station wagon (S124)

#### OE

0011516901  
 0021519301  
 0031512801  
 003151280180  
 0031513801  
 004151060180

Clamp: M8  
 Flange [mm]: 82,5  
 Number of mounting bores: 2  
 Number of Teeth: 9  
 Number of Thread Bores: 2  
 Rated Power [kW]: 1,4  
 Rotation Direction: Clockwise rotation  
 Voltage [V]: 12

### MT-201JM

#### Starter



MAYBACH 62 (240\_)  
 MAYBACH MAYBACH (240\_)  
 MERCEDES-BENZ CLASSE C (W202)  
 MERCEDES-BENZ CLASSE C (W203)  
 MERCEDES-BENZ CLASSE C (W204)  
 MERCEDES-BENZ CLASSE C Coupe (CL203)

#### OE

0009060202  
 0051516501  
 005151650180  
 0051517701  
 0061510601  
 0061514101

Clamp: M8  
 Clamp: Pin "50" M6  
 Flange [mm]: 59,5  
 Number of mounting bores: 2  
 Number of Teeth: 10  
 Number of Thread Bores: 2  
 Rated Power [kW]: 1,7  
 Rotation Direction: Clockwise rotation  
 Voltage [V]: 12

## Electrics

### MT-202JM

#### Starter



AUDI A4 (8K2, B8)  
AUDI A4 Allroad (8KH, B8)  
AUDI A4 Avant (8K5, B8)  
AUDI A5 (8T3)  
AUDI A5 Cabriolet (8F7)  
AUDI A5 Sportback (8TA)

#### OE

03L911021  
03L911021C  
03L911021CX  
03L911021E  
03L911021F  
03L911021FX

Clamp: Pin "50" Plug  
Flange [mm]: 66  
Number of mounting bores: 2  
Number of Teeth: 10  
Number of Thread Bores: 1  
Rated Power [kW]: 1,7  
Voltage [V]: 12

### MT-203JM

#### Starter



ALFA ROMEO AR 6 Autobus (280)  
ALFA ROMEO AR 6 Furgonato (280)  
CITROEN C25 Autobus (280\_, 290\_)  
CITROEN C25 Pianale piatto/Telaio (280\_, 290\_)  
FIAT DUCATO Autobus (230)  
FIAT DUCATO Furgonato (230L)

#### OE

46231644  
5802E3  
71721282  
71721296  
7589005  
7589151

Clamp: M8  
Flange [mm]: 82  
Number of mounting bores: 3  
Number of Teeth: 9  
Number of Thread Bores: 2  
Rated Power [kW]: 2,2  
Rotation Direction: Clockwise rotation  
Voltage [V]: 12

### MT-204JM

#### Starter



AUDI A1 (8X1, 8XF)  
AUDI A1 Sportback (8XA, 8XK)  
AUDI A3 (8P1)  
AUDI A3 (8V1)  
AUDI A3 Cabriolet (8P7)  
AUDI A3 Cabriolet (8V7)

#### OE

02M911021E  
02M911021EX  
02M911021P  
02M911021PX  
02M911021S  
02M911021SX

Flange [mm]: 79  
Number of mounting bores: 2  
Number of Teeth: 13  
Rated Power [kW]: 2,2  
Rotation Direction: Anti-clockwise rotation  
Voltage [V]: 12

### MT-205JM

#### Starter



PIAGGIO APE (MP) VESPACAR  
PIAGGIO APE CALESSINO Cabriolet  
PIAGGIO APE CLASSIC Pianale piatto/Telaio  
PIAGGIO APE TM Furgonato  
PIAGGIO APE TM Pianale piatto/Telaio  
PIAGGIO M500

#### OE

250761  
292083  
58402060  
58402490

Clamp: Pin "50" M6  
Flange [mm]: 76  
Number of mounting bores: 3  
Number of Teeth: 11  
Number of Thread Bores: 3  
Rated Power [kW]: 1,6  
Voltage [V]: 12

### MT-206JM

#### Starter



CHRYSLER 300 C (LX)  
CHRYSLER 300 C Touring (LX)  
JEEP COMMANDER (XK)  
JEEP GRAND CHEROKEE III (WH, WK)  
MAYBACH 62 (240\_)  
MAYBACH MAYBACH (240\_)

#### OE

0009062402  
0051510101  
0051518901  
0061514301  
0061514401  
0061516201

Clamp: Pin "30" M8 B+  
Clamp: Pin "50" M6  
Flange [mm]: 60  
Number of mounting bores: 2  
Number of Teeth: 10  
Number of Thread Bores: 2  
Rated Power [kW]: 1,8  
Rotation Direction: Clockwise rotation  
Voltage [V]: 12

## Electrics

### MT-207JM

#### Starter



TOYOTA AVENSIS (\_T22\_)  
 TOYOTA AVENSIS Liftback (\_T22\_)  
 TOYOTA AVENSIS Station Wagon (\_T22\_)  
 TOYOTA CARINA E (\_T19\_)  
 TOYOTA CARINA E Sportswagon (\_T19\_)  
 TOYOTA CARINA E Tre volumi (\_T19\_)

**OE**  
 2810001020  
 2810006020  
 2810008010  
 281000B010  
 281000B020  
 281000B02084

Clamp: M8  
 Flange [mm]: 74  
 Number of mounting bores: 2  
 Number of Teeth: 10  
 Number of Thread Bores: 2  
 Rated Power [kW]: 2  
 Rotation Direction: Clockwise rotation  
 Voltage [V]: 12

### MT-208JM

#### Starter



SMART CABRIO (450)  
 SMART CITY-COUPE (450)  
 SMART FORTWO Cabrio (450)  
 SMART FORTWO Cabrio (451)  
 SMART FORTWO Coupé (450)  
 SMART FORTWO Coupé (451)

**OE**  
 0001477V003  
 0001477V006  
 0051513801  
 005151380180  
 0051518301  
 6601510101

Clamp: M8  
 Flange [mm]: 70  
 Number of mounting bores: 2  
 Number of Teeth: 9  
 Number of Thread Bores: 2  
 Rated Power [kW]: 1  
 Rotation Direction: Clockwise rotation  
 Voltage [V]: 12

### MT-209JM

#### Starter



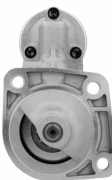
FIAT BRAVA (182)  
 FIAT BRAVO I (182)  
 FIAT DOBLO (119)  
 FIAT DOBLO Cargo (223)  
 FIAT MAREA (185)  
 FIAT MAREA Weekend (185)

**OE**  
 46748349  
 46748350  
 46800152  
 46808152  
 46816971  
 46821681

Clamp: M8  
 Clamp: Pin "50" M6  
 Flange [mm]: 66  
 Number of mounting bores: 3  
 Number of Teeth: 9  
 Number of Thread Bores: 3  
 Rated Power [kW]: 1,1  
 Rotation Direction: Clockwise rotation  
 Voltage [V]: 12

### MT-210JM

#### Starter



ALFA ROMEO 75 (162B)  
 ALFA ROMEO 90 (162)  
 ALFA ROMEO GIULIETTA (116)  
 ALFA ROMEO GTV (116)  
 ALFA ROMEO SPIDER (115)

**OE**  
 0060522387  
 116550503000  
 116550503003  
 117010503000  
 60522387  
 60523034

Clamp: M8  
 Flange [mm]: 67  
 Number of mounting bores: 3  
 Number of Teeth: 9  
 Rated Power [kW]: 1,4  
 Rotation Direction: Clockwise rotation  
 Voltage [V]: 12

### MT-211JM

#### Starter



LAND ROVER DEFENDER Cabrio (LD)  
 LAND ROVER DEFENDER Station Wagon (LD)  
 LAND ROVER DISCOVERY I (LJ, LG)  
 LAND ROVER RANGE ROVER I (AE, AN, HAA, HAB,  
 HAM, HBM, RE, RN)  
 LAND ROVER RANGE ROVER II (LP)

**OE**  
 0051511501  
 0494285R  
 525026D  
 905720100081  
 A0051511501  
 BF5T11001AA

Clamp: M8  
 Flange [mm]: 92  
 Number of mounting bores: 3  
 Number of Teeth: 9  
 Rated Power [kW]: 2,2  
 Rotation Direction: Clockwise rotation  
 Voltage [V]: 12

## Electrics

### MT-212JM

#### Starter



FORD GALAXY (WA6)  
 FORD MONDEO IV (BA7)  
 FORD MONDEO IV Tre volumi (BA7)  
 FORD MONDEO IV Turnier (BA7)  
 FORD S-MAX (WA6)

#### OE

1253808  
 1387092  
 1480550  
 1564725  
 1671579  
 1728770

Clamp: Pin "50" M6  
 Flange [mm]: 76  
 Number of mounting bores: 3  
 Number of Teeth: 9  
 Number of Thread Bores: 3  
 Rated Power [kW]: 2  
 Rotation Direction: Clockwise rotation  
 Voltage [V]: 12

### MT-213JM

#### Starter



#### OE

114362-77010  
 114362-77011  
 136954  
 2506954  
 QD114A  
 S114-414

Clamp: M8  
 Flange [mm]: 66  
 Number of Bores: 2  
 Number of Teeth: 8  
 Rated Power [kW]: 0,9  
 Rotation Direction: Anti-clockwise rotation  
 Voltage [V]: 12

### MT-214JM

#### Starter



NISSAN INTERSTAR Autobus (X70)  
 NISSAN INTERSTAR Furgonato (X70)  
 NISSAN INTERSTAR Pianale piatto/Telaio  
 NISSAN TERRANO II (R20)  
 NISSAN TERRANO Van (R20)  
 OPEL MOVANO Combi (J9)

#### OE

233002W000  
 233002W200  
 233002W20A  
 233002W20B  
 233002W210  
 23300744501

Clamp: M8  
 Number of mounting bores: 2  
 Number of Teeth: 9  
 Rated Power [kW]: 2,5  
 Rotation Direction: Clockwise rotation  
 Voltage [V]: 12

### MT-215JM

#### Starter



CHEVROLET AVEO 2 volumi /Coda spiovente (T300)  
 CHEVROLET AVEO Tre volumi (T300)  
 OPEL AGILA (A) (H00)  
 OPEL ASTRA H (L48)  
 OPEL ASTRA H Furgonato (L70)

#### OE

1202209  
 1638119980  
 55217672  
 55221292  
 55564491  
 55566491

Clamp: Pin "50" M6  
 Flange [mm]: 64  
 Number of mounting bores: 2  
 Number of Teeth: 10  
 Number of Thread Bores: 1  
 Rated Power [kW]: 1,8  
 Rotation Direction: Clockwise rotation  
 Voltage [V]: 12

### MT-216JM

#### Starter



CITROEN C-CROSSER (EP\_)  
 CITROEN C-CROSSER ENTERPRISE  
 CITROEN C-CROSSER Van (VU\_)  
 CITROEN C4 Coupé (LA\_)  
 CITROEN C4 Grand Picasso I (JA\_)  
 CITROEN C4 Grand Picasso II

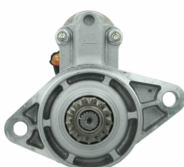
#### OE

1638126880  
 1810A111  
 3553141  
 5802AT  
 5802AV  
 5802AW

Clamp: M10  
 Number of mounting bores: 5  
 Number of Teeth: 11  
 Number of Thread Bores: 5  
 Rated Power [kW]: 2,5  
 Rotation Direction: Clockwise rotation  
 Voltage [V]: 12

### MT-217JM

#### Starter



AUDI A3 (8P1)  
 AUDI A3 (8V1)  
 AUDI A3 Cabriolet (8P7)  
 AUDI A3 Cabriolet (8V7)  
 AUDI A3 Limousine (8VS)  
 AUDI A3 Sportback (8PA)

#### OE

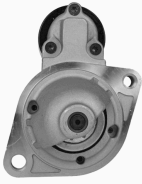
02E911022C  
 02E911022CX  
 02E911023M  
 02E911023MX  
 02E911023Q  
 02E911023QX

Clamp: Pin "30" M8 B+  
 Clamp: Pin "50" Plug  
 Flange [mm]: 79  
 Number of mounting bores: 2  
 Number of Teeth: 13  
 Rated Power [kW]: 2  
 Rotation Direction: Anti-clockwise rotation  
 Voltage [V]: 12

## Electrics

### MT-218JM

#### Starter



BMW 1 (E81)  
BMW 1 (E87)  
BMW 1 (F20)  
BMW 1 (F21)  
BMW 1 Cabriolet (E88)  
BMW 1 Coupé (E82)

#### OE

12412344243  
12412354701  
12417521116  
12417521122  
12417521123  
12417526236

Clamp: Pin "30" M8 B+  
Clamp: Pin "50" Plug  
Flange [mm]: 76  
Number of mounting bores: 2  
Number of Teeth: 9  
Number of Thread Bores: 1  
Rated Power [kW]: 1,2  
Rotation Direction: Clockwise rotation  
Voltage [V]: 12

### MT-219JM

#### Starter



MERCEDES-BENZ CLASSE A (W168)  
MERCEDES-BENZ Vaneo (414)

#### OE

1661510001  
166151000180  
A1661510001  
A166151000180

Clamp: M8 B+  
Clamp: Pin "50" M6  
Flange [mm]: 70  
Number of mounting bores: 2  
Number of Teeth: 8  
Rated Power [kW]: 0,8  
Rotation Direction: Clockwise rotation  
Voltage [V]: 12

### MT-220JM

#### Starter



FORD FOCUS Station wagon (DNW)  
SEAT AROSA (6H)  
SEAT CORDOBA (6K1, 6K2)  
SEAT CORDOBA (6K2)  
SEAT CORDOBA Vario (6K5)  
SEAT IBIZA II (6K1)

#### OE

0016800  
031911023C  
036911023BX  
036911023Q  
036911023QX  
036911023S

Clamp: M8  
Flange [mm]: 82,5  
Number of mounting bores: 4  
Number of Teeth: 9  
Number of Thread Bores: 2  
Rated Power [kW]: 1,1  
Rotation Direction: Clockwise rotation  
Voltage [V]: 12

### MT-221JM

#### Starter



CITROEN JUMPY (U6U)  
CITROEN JUMPY Furgonato (BS\_, BT\_, BY\_, BZ\_)  
FIAT BRAVA (182)  
FIAT BRAVO I (182)  
FIAT FIORINO Furgonato (146)  
FIAT FIORINO MPV / Space wagon (146\_)

#### OE

3059110236  
4470377  
44703770  
4470378  
46231535  
46231537

Clamp: M8  
Clamp: Pin "50" M6  
Flange [mm]: 64  
Number of mounting bores: 3  
Number of Teeth: 8  
Number of Thread Bores: 3  
Rated Power [kW]: 1  
Rotation Direction: Clockwise rotation  
Voltage [V]: 12

### MT-222JM

#### Starter



JEEP CHEROKEE (KJ)

#### OE

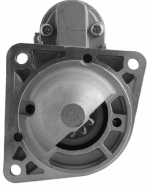
056041579AB  
56041579  
56041579AB  
KRL041579AB  
M002T88372  
M002T88372ZC

Clamp: M8  
Flange [mm]: 82,5  
Number of mounting bores: 3  
Number of Teeth: 10  
Rated Power [kW]: 2,2  
Rotation Direction: Clockwise rotation  
Voltage [V]: 12

## Electrics

### MT-223JM

#### Starter



CADILLAC BLS  
OPEL ASTRA GTC J  
OPEL ASTRA H (L48)  
OPEL ASTRA H Furgonato (L70)  
OPEL ASTRA H GTC (L08)  
OPEL ASTRA H Station wagon (L35)

#### OE

1202283  
1202489  
1202594  
55352882  
55585238  
6202073

Clamp: M8  
Clamp: Pin "50" M6  
Flange [mm]: 82  
Number of mounting bores: 3  
Number of Teeth: 10  
Rated Power [kW]: 1,9  
Rotation Direction: Clockwise rotation  
Voltage [V]: 12

### MT-224JM

#### Starter



SUZUKI GRAND VITARA I (FT, GT)

#### OE

3110068D00  
M002T85171  
M002T85271  
M002T85271ZC  
M2T85271  
M2T85271ZC

Clamp: M8  
Flange [mm]: 66  
Number of mounting bores: 3  
Number of Teeth: 10  
Number of Thread Bores: 3  
Rated Power [kW]: 2  
Rotation Direction: Clockwise rotation  
Voltage [V]: 12

### MT-225JM

#### Starter



JEEP GRAND CHEROKEE II (WJ, WG)

#### OE

05033125AA  
05033125AB  
5033125  
5033125AA  
5033125AB  
8033125AA

Clamp: M8 B+  
Flange [mm]: 82  
Number of mounting bores: 2  
Number of Teeth: 12  
Number of Thread Bores: 2  
Rated Power [kW]: 2  
Voltage [V]: 12

### MT-226JM

#### Starter



HYUNDAI H-1 Pianale piatto/Telaio  
MITSUBISHI L 200 (K7\_T, K6\_T)  
MITSUBISHI L 200 (KB\_T, KA\_T)  
MITSUBISHI L 200 Pianale piatto/Telaio (KA\_T, KB\_T)  
MITSUBISHI L 300 Autobus (P0\_W, P1\_W, P2\_W)

#### OE

1810A053  
3610042200  
3610042300  
6000608524  
M002T84071  
M002T84071ZT

Clamp: M8  
Flange [mm]: 77  
Number of mounting bores: 2  
Number of Teeth: 10  
Number of Teeth: 12  
Number of Thread Bores: 2  
Rated Power [kW]: 2,2  
Rotation Direction: Clockwise rotation  
Voltage [V]: 12

### MT-227JM

#### Starter



NISSAN MICRA IV (K13)  
NISSAN NOTE (E12)

#### OE

0023001HC1A  
00233001HC1A  
233001HCOB  
233001HCOD  
233001HCOE  
233001HC1A

Clamp: Pin "30" M8  
Clamp: Pin "50" M5  
Number of mounting bores: 2  
Number of Teeth: 9  
Number of Thread Bores: 2  
Rated Power [kW]: 1  
Rotation Direction: Clockwise rotation  
Voltage [V]: 12

## Electrics

### MT-228JM

#### Starter



LAND ROVER DEFENDER Cabrio (LD)  
 LAND ROVER DEFENDER Pick-up (LD\_)  
 LAND ROVER DEFENDER Station Wagon (LD)  
 LAND ROVER DISCOVERY II (LJ, LT)

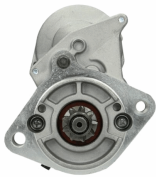
#### OE

NAD101240  
 NAD101240E  
 NAD101240G  
 NAD10240

Clamp: M8  
 Flange [mm]: 66  
 Number of mounting bores: 3  
 Number of Teeth: 9  
 Rated Power [kW]: 2,2  
 Rotation Direction: Clockwise rotation  
 Voltage [V]: 12

### MT-229JM

#### Starter



LAND ROVER FREELANDER (LN)  
 LAND ROVER FREELANDER Soft Top  
 MG MG ZT  
 MG MG ZT- T  
 ROVER 75 (RJ)  
 ROVER 75 Tourer (RJ)

#### OE

GNU4824  
 GNU4904  
 NAD100500  
 NAD101140  
 NAD101140E  
 NAD101500

Clamp: M8  
 Flange [mm]: 76  
 Number of mounting bores: 3  
 Number of Teeth: 9  
 Number of Thread Bores: 2  
 Rated Power [kW]: 2  
 Rotation Direction: Clockwise rotation  
 Voltage [V]: 12

### MT-230JM

#### Starter



ISUZU TROOPER (UBS)

#### OE

2873K401  
 5811001840  
 894133-7582  
 894133-7583  
 894133-7584  
 8941337585

Clamp: M8  
 Flange [mm]: 95  
 Number of mounting bores: 2  
 Number of Teeth: 9  
 Rated Power [kW]: 2,2  
 Rotation Direction: Clockwise rotation  
 Voltage [V]: 12

### MT-231JM

#### Starter



HYUNDAI ELANTRA (XD)  
 HYUNDAI ELANTRA Tre volumi (XD)  
 HYUNDAI GRANDEUR (TG)  
 HYUNDAI HIGHWAY VAN  
 HYUNDAI SANTA FÉ I (SM)  
 HYUNDAI SANTA FÉ I Cassone/SUV (SM)

#### OE

031013170  
 3610027000  
 3610027001  
 3610027010  
 3610027011  
 3610037000

Clamp: M8  
 Flange [mm]: 82,5  
 Number of mounting bores: 2  
 Number of Teeth: 9  
 Number of Thread Bores: 2  
 Rated Power [kW]: 2  
 Rotation Direction: Clockwise rotation  
 Voltage [V]: 12

### MT-232JM

#### Starter



TOYOTA AURIS (NRE15\_, ZZE15\_, ADE15\_, ZRE15\_, NDE15\_)  
 TOYOTA AURIS Furgonato (\_E15\_)  
 TOYOTA COROLLA (ZZE12\_, NDE12\_, ZDE12\_)  
 TOYOTA COROLLA Station wagon (\_E12J\_, \_E12T\_)

#### OE

12417791335  
 281000N030  
 2810033040  
 281003304084  
 2810033070  
 2810033071

Clamp: M8  
 Flange [mm]: 74  
 Number of mounting bores: 2  
 Number of Teeth: 9  
 Number of Thread Bores: 1  
 Rated Power [kW]: 2  
 Rotation Direction: Clockwise rotation  
 Voltage [V]: 12

### MT-233JM

#### Starter



ALFA ROMEO MITO (955)  
 CHRYSLER YPSILON  
 FIAT 500 (312)  
 FIAT 500 C (312)  
 FIAT 500L  
 FIAT PANDA (519, 312, 319)

#### OE

51872564  
 51938439

Clamp: Pin "30" M8 B+  
 Flange [mm]: 76  
 Number of mounting bores: 3  
 Number of Teeth: 10  
 Rated Power [kW]: 1,4  
 Rotation Direction: Clockwise rotation  
 Voltage [V]: 12

## Electrics

### MT-234JM

#### Starter



BMW 3 (E46)  
BMW 3 Cabriolet (E46)  
BMW 3 Coupe (E46)  
BMW 3 Touring (E46)  
BMW 5 (E60)  
BMW 5 Touring (E61)

#### OE

12412155827  
12412344232  
12417788680  
12417788682  
2155827  
7788680

Clamp: M8  
Clamp: Pin "50" M6  
Flange [mm]: 76  
Number of mounting bores: 2  
Number of Teeth: 11  
Number of Thread Bores: 2  
Rated Power [kW]: 2  
Rotation Direction: Clockwise rotation  
Voltage [V]: 12

### MT-235JM

#### Starter



TOYOTA BELTA  
TOYOTA YARIS (NHP13\_, NSP13\_, NCP13\_,  
KSP13\_, NLP13\_)  
TOYOTA YARIS (SCP9\_, NSP9\_, KSP9\_, NCP9\_,  
ZSP9\_)  
TOYOTA YARIS Furgonato (\_P13\_)

#### OE

281000Q040  
281000Q041  
281000Q050  
281000Q05084  
2810040090  
2810040091

Clamp: M8 B+  
Clamp: Pin "50" Plug  
Flange [mm]: 74  
Number of mounting bores: 2  
Number of Teeth: 9  
Number of Thread Bores: 1  
Rated Power [kW]: 1,3  
Rotation Direction: Clockwise rotation  
Voltage [V]: 12

### MT-236JM

#### Starter



LAND ROVER DISCOVERY SPORT (LC)  
LAND ROVER FREELANDER 2 (FA\_)  
LAND ROVER RANGE ROVER EVOQUE (LV)

#### OE

6G9N11000MA  
6G9N11000MB  
6G9NMB  
AH5211001AC  
LR003468  
LR007372

Clamp: Pin "30" M8 B+  
Clamp: Pin "50" M5  
Number of mounting bores: 3  
Number of Teeth: 10  
Number of Thread Bores: 3  
Rated Power [kW]: 2  
Rotation Direction: Clockwise rotation  
Voltage [V]: 12

### MT-237JM

#### Starter



TOYOTA YARIS (SCP1\_, NLP1\_, NCP1\_)  
TOYOTA YARIS VERSO (\_NLP2\_, \_NCP2\_)  
TOYOTA YARIS VERSO VAN Furgonato (\_P2\_)

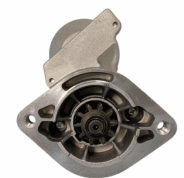
#### OE

2810021030  
281002103084  
2810021032

Clamp: M8  
Flange [mm]: 74  
Number of mounting bores: 2  
Number of Teeth: 9  
Number of Thread Bores: 1  
Rated Power [kW]: 1  
Rotation Direction: Clockwise rotation  
Voltage [V]: 12

### MT-238JM

#### Starter



TOYOTA CARINA E (\_T19\_)  
TOYOTA CARINA E Sportswagon (\_T19\_)  
TOYOTA CARINA E Tre volumi (\_T19\_)

#### OE

28100-64200  
2810064130  
2810064300  
9622809362

Clamp: M8  
Flange [mm]: 74  
Number of mounting bores: 2  
Number of Teeth: 10  
Number of Thread Bores: 2  
Rated Power [kW]: 1,4  
Rotation Direction: Clockwise rotation  
Voltage [V]: 12

## Electrics

### MT-239JM

#### Starter



HYUNDAI ATOS (MX)  
HYUNDAI GETZ (TB)  
HYUNDAI i10 (PA)  
KIA PICANTO (BA)

#### OE

3610002000  
3610002500  
3610002510  
3610002511  
3610002550  
3610002555

Clamp: M8  
Flange [mm]: 75  
Number of mounting bores: 2  
Number of Teeth: 8  
Number of Thread Bores: 2  
Rated Power [kW]: 0,8  
Rotation Direction: Clockwise rotation  
Voltage [V]: 12

### MT-240JM

#### Starter



CITROEN JUMPER Autobus  
CITROEN JUMPER Autobus (230P)  
CITROEN JUMPER Autobus (244, Z\_)  
CITROEN JUMPER Furgonato  
CITROEN JUMPER Furgonato (230L)  
CITROEN JUMPER Furgonato (244)

#### OE

1349920080  
1611206880  
1614379980  
1616451080  
51779086  
51832958

Clamp: Pin "50" M6  
Flange [mm]: 82  
Number of mounting bores: 3  
Number of Teeth: 9  
Number of Thread Bores: 3  
Rated Power [kW]: 2,5  
Rotation Direction: Clockwise rotation  
Voltage [V]: 12